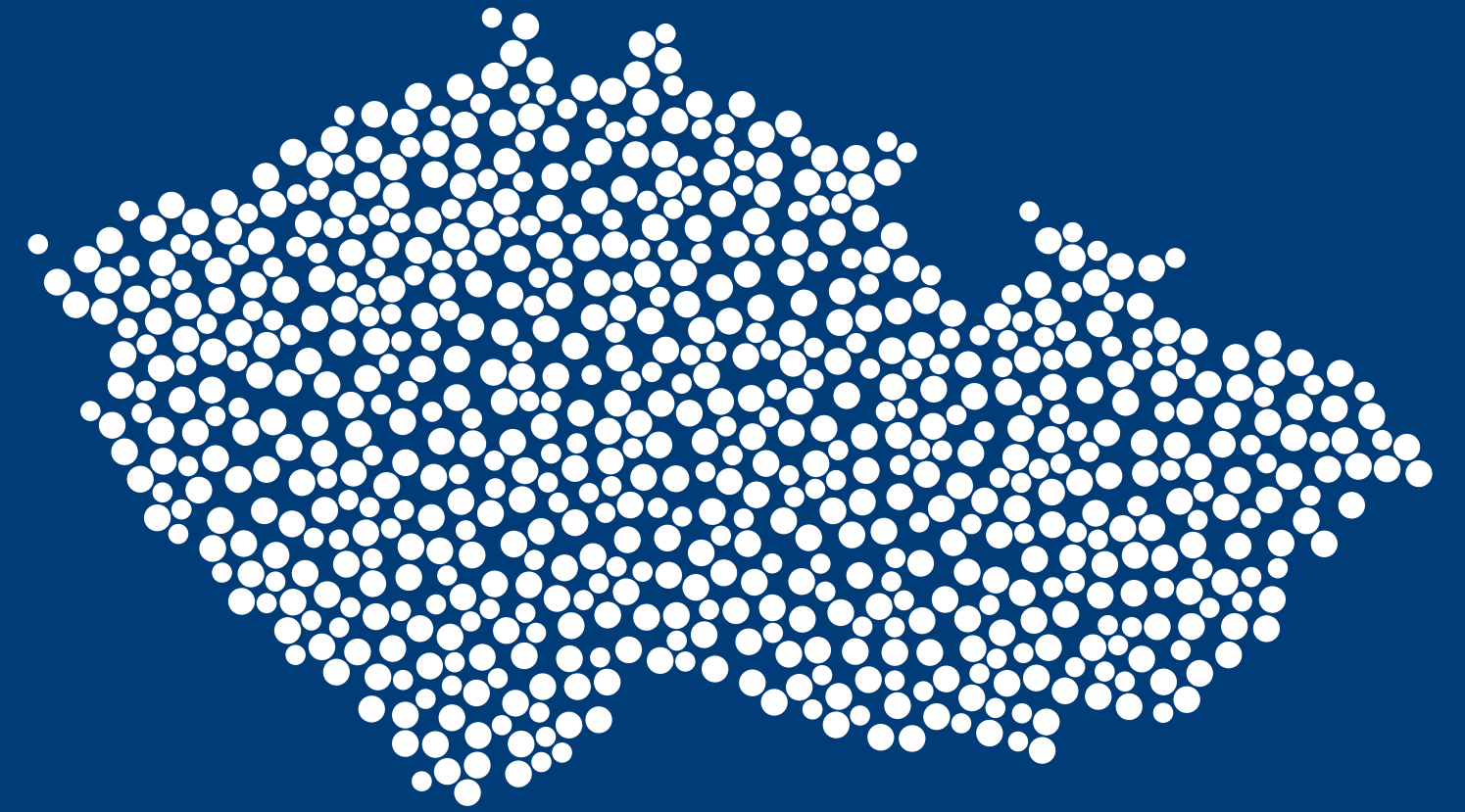


Inspirational Monthly Magazine of the Czech Convention Bureau

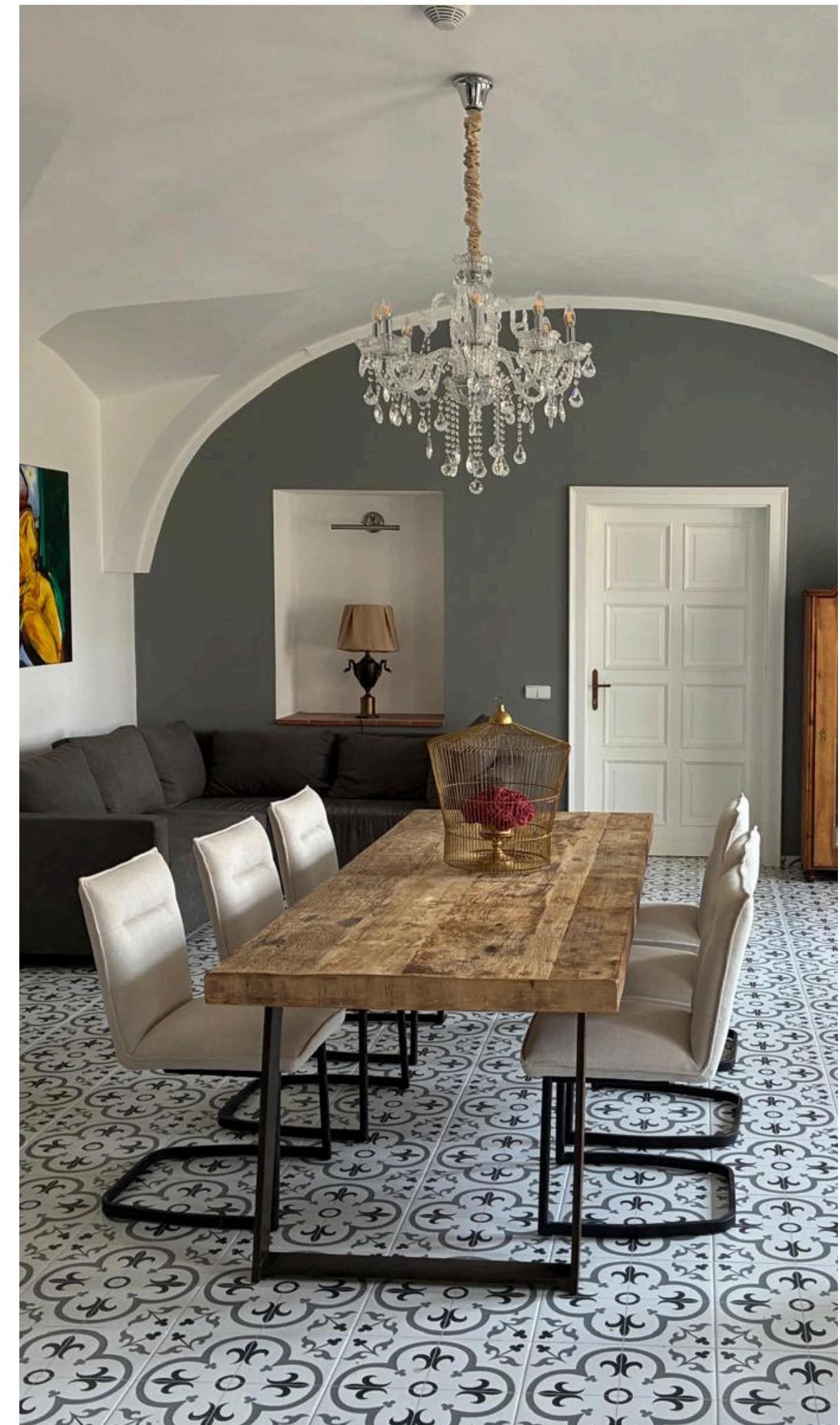
Venues with a Story

... from history, personalities, architecture, nobility or
musical composers



Venues with a story

| | |
|---|----|
| <u>Capital City of Prague</u> | 3 |
| <u>South Bohemian Region</u> | 9 |
| <u>South Moravian Region</u> | 16 |
| <u>Karlovy Vary Region</u> | 22 |
| <u>Vysočina Region</u> | 29 |
| <u>Hradec Králové Region</u> | 35 |
| <u>Northern Bohemia Region</u> | 41 |
| <u>Moravian-Silesian Region</u> | 47 |
| <u>Olomouc Region</u> | 53 |
| <u>East Bohemia Region</u> | 59 |
| <u>Pilsen Region</u> | 65 |
| <u>Central Bohemia Region</u> | 71 |
| <u>Ústí Region</u> | 77 |
| <u>Zlín Region</u> | 85 |



Capital City of Prague

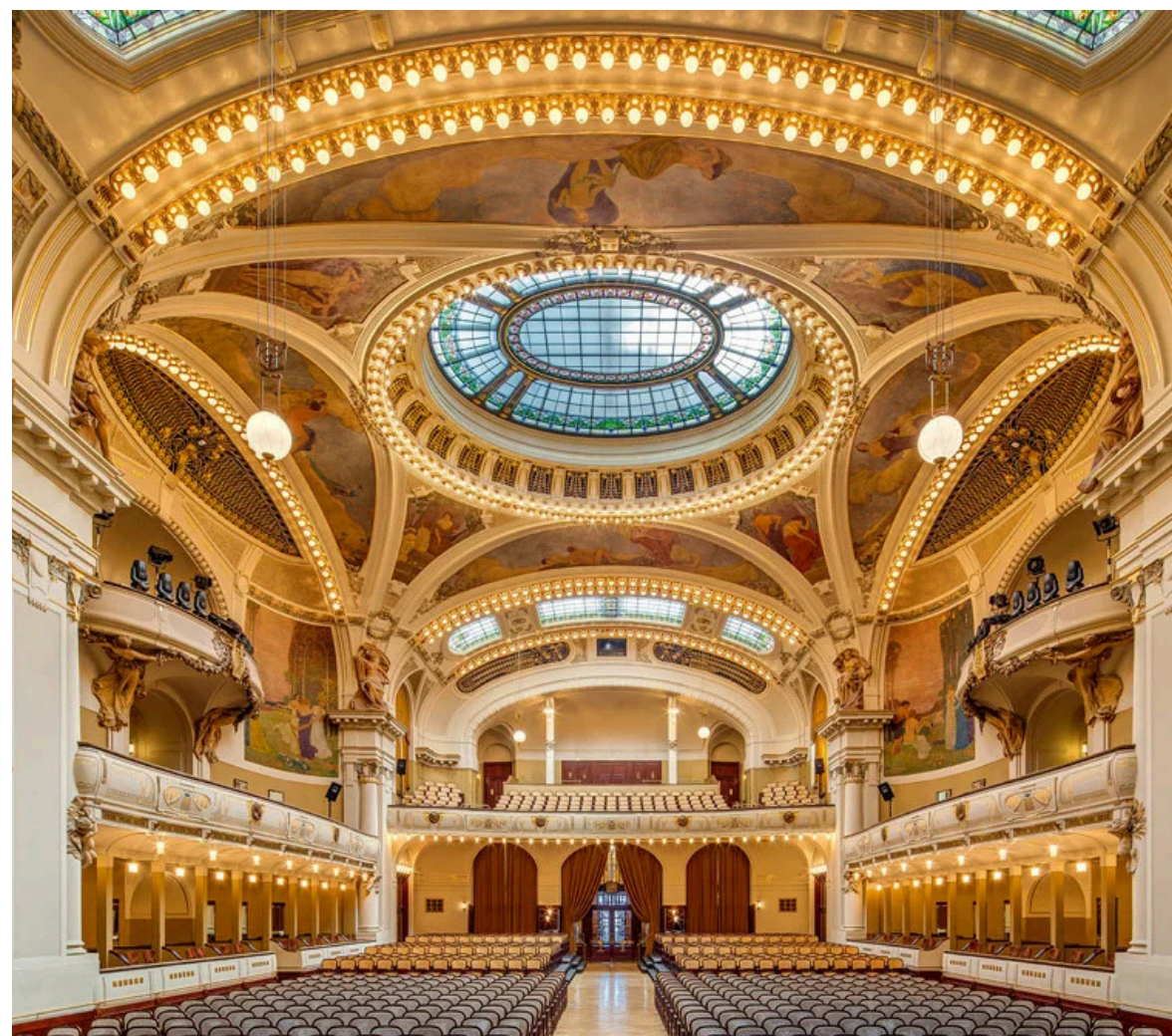
Venues with a story



Municipal House

The story of the Municipal House in Prague is more than 500 years older than the building itself: at the end of the 14th century, King Wenceslas IV had the King's Court built here, which became the residence of six Czech monarchs. The most significant chapter in its history, however, came in the second decade of the 20th century, forever linking it to the birth of modern Czech statehood.

After the last remnants of the King's Court disappeared, a representative cultural and social centre was built on its site between 1905 and 1912. Leading Czech architects took part in the Art Nouveau building of the Municipal House, and its decoration was created by famous artists including M. Aleš, M. Švabinský, J. V. Myslbek and A. Mucha.



In 1918, the Municipal House became the stage for key events leading to the creation of independent Czechoslovakia, beginning with the Epiphany Declaration in January and ending with the approval of the Act establishing the independent state on 28 October. Crucial negotiations also took place here during the Velvet Revolution in 1989. Thanks to a demanding reconstruction in the 1990s, this national cultural monument still serves its original social and cultural purpose today.



2000 pax



AV equipment available



Senovážné náměstí 13, Praha 1



www.obecnidum.cz

More info: [Prague Convention Bureau](#)

Červený Jelen

The Červený Jelen (Red Deer) restaurant in Prague takes its name from the site's historic owner, Count František Antonín Sporck, a patron of the arts and passionate huntsman. The symbol of the deer and the motif of St. Hubert, patron of hunters, lives on today not only in the name but also in the iconic statues of red deer around the restaurant.

The layout of the originally Baroque palace connected to the Sporck family remained unchanged until the early 20th century, when the property was bought by the Anglo-Austrian Bank. More dramatic changes came with the addition of two wings of the Anglo-Czechoslovak Bank and a reconstruction led by Josef Gočár. During World War II the complex was confiscated by the Gestapo, briefly returned to its original owner afterwards, and expropriated again in 1948 by the local Communist Party secretariat.



The palace changed hands several times until 2012, when it was purchased by a private investor. A costly, extensive yet considerate transformation - awarded the title Building of the Year 2018 - created a restaurant with social and event spaces that respects and highlights the building's historic functions.



1100 pax



AV equipment available



Hybernská 1034/5, Praha 1



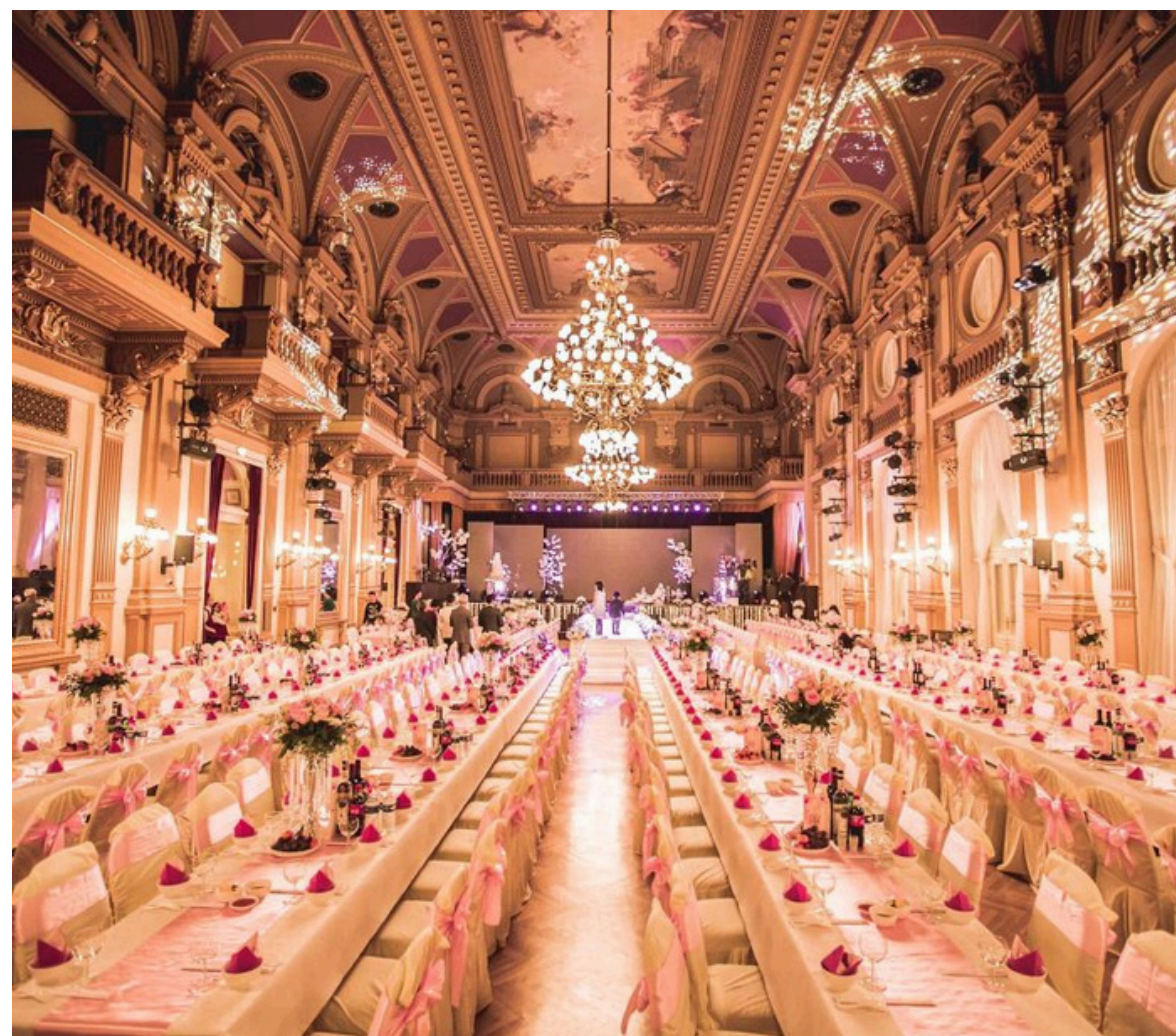
cervenyjelen.cz

More info: [Prague Convention Bureau](http://PragueConventionBureau)

National House in Vinohrady

The National House in Vinohrady was built at the end of the 19th century as a representative centre for the rapidly developing Prague district of Královské Vinohrady. From its opening, the Neo-Renaissance building was the cultural and social heart of Czech bourgeois society. Renowned artists including M. Aleš and F. Ženíšek contributed to its decoration.

Because the house served as a venue for balls, concerts, theatre performances and political meetings, it became a symbol of the self-confidence of Czech society at the time the modern nation was forming, and later an important space for public life in the First Republic. It was home to many cultural and artistic associations and projects, such as the Hlahol choir, the Avant-Garde Theatre, the Červená sedma cabaret and a famous dance school.



After a partial decline in cultural activity during the 20th century, the National House returned to its original purpose in its final decade. Today it fully serves as a vibrant cultural and social centre - hosting balls, concerts, conferences and gastronomic events. The National House in Vinohrady thus remains a meeting place that connects tradition with modern city life.



1500 pax



AV equipment available



Náměstí Míru 820/9, Praha 2



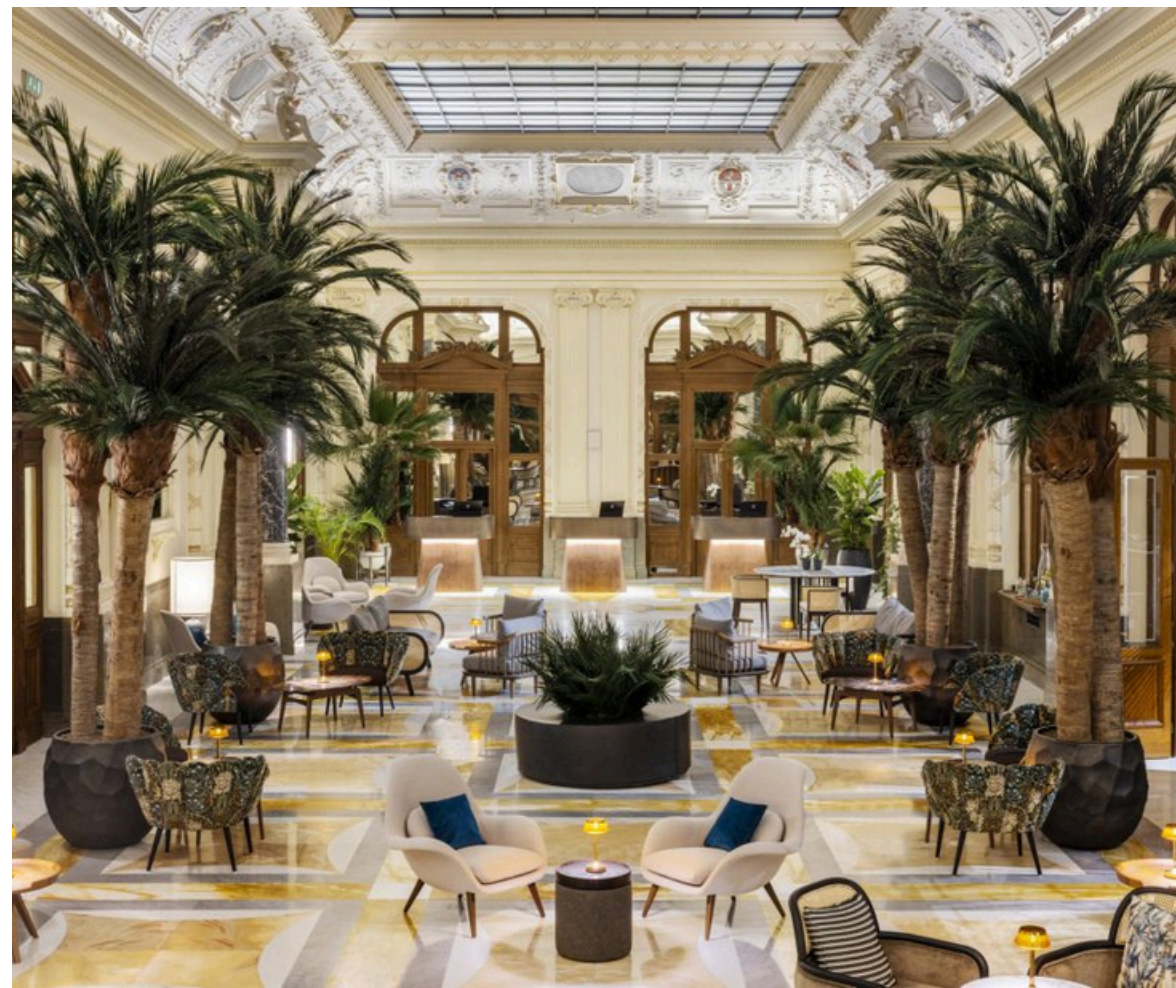
www.nardum.cz

More info: [Prague Convention Bureau](#)

NH Collection Prague Carlo IV.

The NH Collection Prague Carlo IV hotel is located in a Neo-Renaissance palace built in 1890 to designs by the famous Viennese architect Achille Wolf as the seat of the First Provincial Mortgage Bank of the Kingdom of Bohemia.

The location on Prague's Senovážné náměstí, home to several important banks, was chosen for its proximity to commodity exchanges and, above all, two railway stations. After 1918, the institution here prospered under the new name Hypoteční banka česká (Czech Mortgage Bank). A less glorious period for the building came between 1945 and 1989, when it housed the Directorate of International Postal Transport, whose function was to censor the contents of postal items.



A new era of glory for this national cultural monument came in the 1990s, when the dilapidated building was reconstructed into a luxury hotel that still preserves authentic elements of the original structure, such as a bar in a former bank vault. The reconstruction earned the project and its authors the title Building of the Year 2004. In 2022 the hotel underwent another extensive design modernisation, linking the building's history with the demands of modern travellers and conference and event organisers.



680 persons (6 rooms ranging from 25 to 220)



AV equipment available



Senovážné náměstí 13, Praha 1



www.nhcollectionpraguecarloiv.com

More info: [Prague Convention Bureau](#)

Prague Congress Centre

The Prague Congress Centre building underwent a dynamic and successful transformation at the very end of the first decade of its existence: from a closed space representing state power, it became an open congress centre that places no limits on global dialogue.

The Prague Congress Centre building underwent a dynamic and successful transformation at the very end of the first decade of its existence: from a closed space representing state power, it became an open congress centre that places no limits on global dialogue.



Today it functions as a vibrant venue for important cultural events and many international and local conferences, congresses and other meetings. The cultural reference in its former name lives on in spaces adorned with timeless works of art. And the Prague Congress Centre continues to expand its capacity as a meeting venue, with an already-approved construction of a new multifunctional hall of up to 5,000 m² underway



10,000 persons (70 halls with capacities from 20 to 2,766)



AV equipment available



5. května 65, Praha 4



www.pragueecc.com

More info: [Prague Convention Bureau](#)

South Bohemian Region

Venues with a story



Solnice Restaurant České Budějovice

A place with a unique atmosphere and rich history that once served as a salt storehouse. Excellent beer from the brewery of the same name is an added draw.

The Gothic SOLNICE building, with the fourth-oldest roof truss of its kind in the Czech Republic, was built in 1531 as a municipal granary. It later stored weapons, and before 1880, salt.



Because of its use as a storehouse, no major structural changes were ever made here. The building underwent a major reconstruction only in the 21st century, when the SOLNICE restaurant was ceremonially opened here on 29 March 2019.



up to 200 persons



state-of-the-art audiovisual technology



Piaristické náměstí, České Budějovice



www.restauracesolnice.cz/pronajem-prostor

More info: [South Bohemia Convention Bureau](#)

Lanna's Shipyard

Discover the spirit of the place where the prominent South Bohemian entrepreneur and builder Vojtěch Lanna was born.

The house where the bistro is located carries a powerful story. It was here in 1805 that Vojtěch Lanna was born - a prominent entrepreneur, builder and patron who played a key role in developing shipping, industry and culture not only in České Budějovice but across the whole region.



Other works by Vojtěch Lanna include extensive warehouses and port facilities on the Vltava, bridges and river modifications for safer shipping. He also contributed to the development of the horse-drawn railway, which connected river and rail transport and significantly boosted the economic development of České Budějovice in the 19th century.



50 pax



audio equipment, projector



Vltavské nábřeží 4, České Budějovice



www.lannovalodenice.cz

More info: [South Bohemia Convention Bureau](#)

Rudolfov Excursion Restaurant

The Rudolfov excursion restaurant near Jindřichův Hradec, known locally as "Rudlák", is closely linked to Karel Čapek, who completed his famous novel Krakatit there during a summer holiday in 1923.

Čapek reportedly stayed in an attic room overlooking the Nežárka river, went mushroom-picking in the surrounding woods, and mentioned in letters that he enjoyed a dark beer. Today he is honoured here with a beer called "Kratatit" and a spirit called "Kratatice". Interestingly, the restaurant gradually fell into decline after 1948 and was closed in the 1980s. For decades it was almost a ruin, but after a demanding reconstruction it reopened to the public in 2023.



The building itself is also architecturally significant - it was designed by Josef Zíték, who later created the National Theatre. Rudolfov was established as early as 1862 as a trip-destination inn for the residents of Jindřichův Hradec and quickly became a popular social venue.



70 persons (90 for theatre seating)



AV equipment - wall projection



Nežárecká 121, Jindřichův Hradec, 377 01



www.vyletnirestauracerudolfov.cz

More info: [South Bohemia Convention Bureau](#)

Kratochvíle State Chateau

Kratochvíle State Chateau is one of the purest examples of Renaissance villa architecture in the Czech Republic, inspired by Italian summer villas.

It was built at the end of the 16th century by William of Rosenberg as his representative and leisure residence - a place intended for pleasure, hunting and social gatherings, which is also reflected in its name "Kratochvíle" (Pastime).



The chateau is surrounded by a water moat and a formal Renaissance garden, creating a harmonious union of architecture and landscape. The interiors are decorated with rich paintings and frescoes featuring hunting and mythological motifs, underscoring the building's original function as a place of entertainment and noble representation.



up to 50 persons



AV vybavení - projekční plátno a projektor



AV equipment - projection screen and projector



zamek-kratochvile.cz

More info: [South Bohemia Convention Bureau](http://SouthBohemiaConventionBureau.cz)

Čkyně Synagogue in the Šumava region

It originally served the local Jewish community, which for centuries was a natural part of life in the region. Today it represents a unique cultural and community centre with a strong historical dimension.

The turning point came after 1989, when an initiative was launched to save and gradually reconstruct it. Thanks to the efforts of the Society for the Restoration of the Synagogue in Čkyně, the building was sensitively restored, regaining both its dignity and a new purpose. Today the synagogue serves as a living space for exhibitions, concerts, lectures and screenings, while retaining a strong, authentic atmosphere.



An important part of its story is the preserved historic Torah scroll from 1828, discovered during reconstruction, as well as a reminder of the fates of the local Jewish residents, including Holocaust victims. The synagogue today is therefore not only an architectural monument but also a place of memory and dialogue that connects history with the present - making it an exceptionally evocative setting for intimate MICE events with deeper meaning.

The building also includes a newly reconstructed information centre.



approx. 50 pax



wall projection, projector, AV system



Čkyně - Prachatice



www.kisprachatice.cz/radnicni-sal-a-sklepy-stare-radnice/

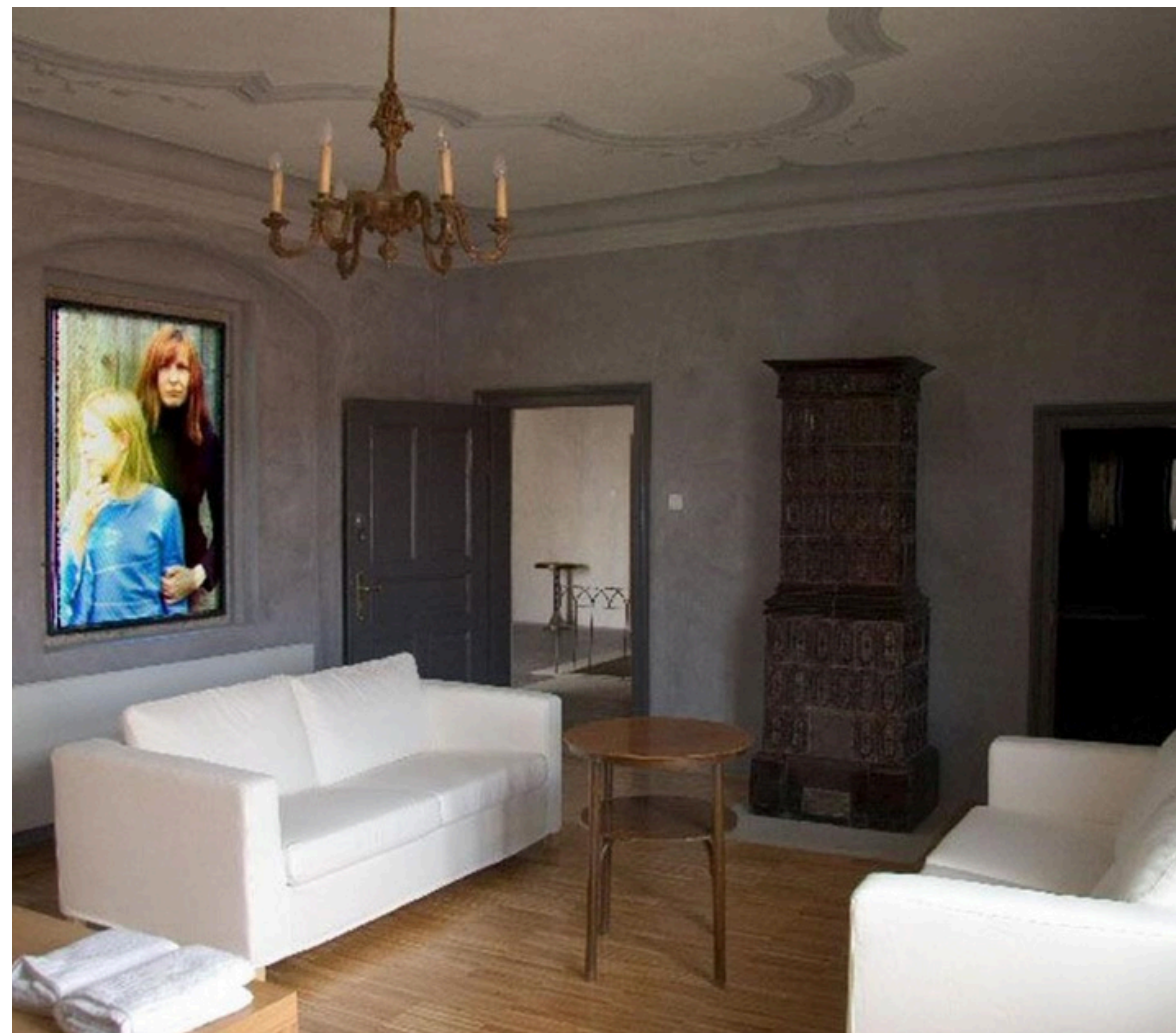
More info: [South Bohemia Convention Bureau](#)

Hotel Besídka Slavonice

Besídka is closely linked to Prague's Sklep theatre and a number of well-known figures in Czech culture. The central character of the whole story is Jan Boháč, a member of the Sklep theatre, who together with other "Sklepáci" bought a dilapidated Renaissance house right on the square in Slavonice in the late 1980s.

The hotel is unique in that its rooms are named after these personalities, many of whom designed or decorated them themselves. For example:

- David Vávra created a room inspired by Noah's Ark,
- Tomáš Hanák covered a bathroom with his trademark absurd texts and wordplay.



Today it is a boutique hotel, restaurant, gallery and cultural centre - but it began almost as an adventurous "underground" project taking shape back under communism. Members of the Sklep theatre started coming here after festivities in Jemnice, and Slavonice completely enchanted them.

The house and the hotel courtyard are also well worth a walk through - they have a truly special atmosphere combining old Slavonice with a touch of the playful humour of the Sklep theatre.



50 pax



AV equipment - data projector, screen



Horní náměstí, Slavonice



www.besidka.cz

More info: [South Bohemia Convention Bureau](#)

South Moravian Region

Venues with a story



Mozzart and Reduta Theatre

The Reduta Theatre on Zelný trh is one of the oldest theatre buildings in Central Europe, with a history dating back to the early 17th century. It was created by converting burgher houses and evolved over the centuries alongside Brno's cultural life into today's chamber stage of the Brno National Theatre.

Reduta's powerful story is linked to Wolfgang Amadeus Mozart, who performed here in 1767 at the age of eleven. This event is commemorated today by the Mozart Hall and a statue in front of the theatre.



After a sensitive reconstruction, Reduta now offers a main hall with a capacity of around 300, a smaller Mozart Hall and a foyer. Thanks to its atmosphere and central location, it is an ideal venue for conferences, corporate evenings, gala events, concerts and intimate cultural events.



350 persons



AV equipment



Brno, Zelní trh



www.ndbrno.cz/o-divadle/budovy/divadlo-reduta

[More info: Brno Convention Bureau](#)

Mendel's Greenhouse and Abbey

The Augustinian Abbey on Mendel Square is a place where the history of world science was written. It was here that Gregor Johann Mendel, the founder of genetics, worked, conducting his famous pea-crossing experiments in the garden and original greenhouse. This tradition is continued today by the modern Mendel's Greenhouse - an architecturally striking glass pavilion that symbolically references the site of his discoveries.

The complex also includes the monumental Basilica of the Assumption of the Virgin Mary, linked to Queen Eliška Rejčka, who founded a monastery here in the 14th century and also found her final resting place here.



Mendel's Greenhouse today offers a unique event space in an inspiring setting of science and history. It is suitable for smaller conferences, networking meetings, presentations, workshops or intimate social events that benefit from its exceptional atmosphere and architecture connecting past and present.



100 pax



AV equipment



Mendlovo náměstí, Brno



www.brnoconvention.cz/prostory/mendeluv-sklenik

[More info: Brno Convention Bureau](#)

Janáček Theatre and JKC

The Janáček Theatre is one of the most important cultural venues in Brno and bears the name of the world-renowned composer Leoš Janáček, whose work is inseparably linked to the city.

This modernist building from the 1960s today serves mainly opera and ballet productions of the Brno National Theatre and is an architecturally distinctive example of post-war theatre construction.

For events it offers representative spaces with a large hall seating over 1,000, complemented by a foyer suitable for gala evenings, conferences or social gatherings. Its advantages include not only top-quality technical facilities but also a strong cultural identity tied to the name of Janáček.



This tradition will be continued by the planned Janáček Cultural Centre, which will become the new home of the Brno Philharmonic. The modern concert hall will offer around 1,200 seats and meet the highest acoustic and technological standards. The space will be intended not only for classical music but also for congresses, international conferences and prestigious cultural or social events, significantly expanding the range of top-tier event venues in Brno.



1000 pax



AV equipment



Brno



www.ndbrno.cz/o-divadle/budovy/pronajem-budov

[More info: Brno Convention Bureau](#)

Brno's Iconic Villas

This unique set of three villas in Brno's Černá Pole district is connected not only by architecture but also by the stories of prominent families and gardens, which today form one continuous green whole.

Villa Tugendhat, a UNESCO World Heritage site, is an icon of functionalism by architect Ludwig Mies van der Rohe and was home to the Tugendhat family. The nearby Löw-Beer Villa belonged to an industrialist family from which Greta Tugendhat herself came, and represents an earlier layer of bourgeois housing from the turn of the 19th and 20th centuries. The Arnold Villa completes the ensemble as another historic residence linked to textile entrepreneurs, and after reconstruction it too is open to the public.



These buildings today offer not only individual tours but also a connected visitor circuit through adjoining gardens that elegantly link the individual properties.

For events, the villas offer an attractive addition to any programme - from guided tours for conference participants, through intimate gatherings, workshops or networking in the gardens, to exclusive cultural events set within world-class architecture and Brno's entrepreneurial history.



by arrangement



AV equipment available



Černopolní

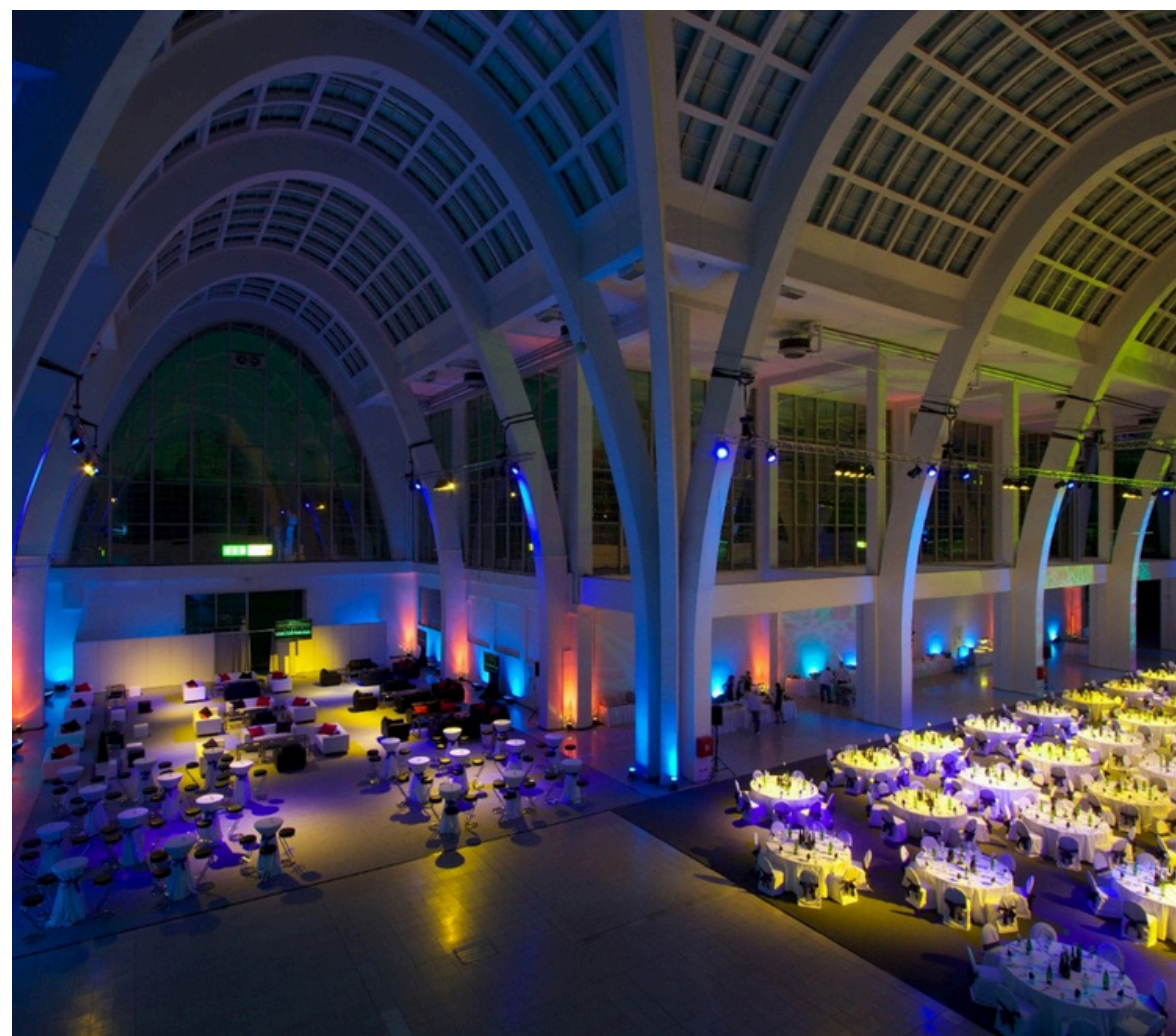


www.brnoconvention.cz/brnenske-vily

[More info: Brno Convention Bureau](#)

BVV - the architecture of Pavilion A

Pavilion A of the Brno Exhibition Centre (BVV in Czech) is an icon of interwar architecture and is closely linked to the founding of the BVV grounds themselves. It was built in 1928 for the Exhibition of Contemporary Culture in Czechoslovakia, which was personally opened by President Tomáš Garrigue Masaryk. His visit and support underscored the significance of this event and of the whole exhibition centre as a symbol of a modern, self-confident state.



The pavilion's dominant feature is a monumental circular hall with a glazed dome, one of the largest of its kind in the world, which still impresses with its airiness and technical design. In 2028 the pavilion will also celebrate 100 years since its creation, making it not only an architectural gem but also a site of exceptional historical value.

Thanks to its size and flexibility, Pavilion A is ideal for large congresses, trade fairs, gala evenings, exhibitions and prestigious social events. It offers extensive indoor areas, top-quality technical facilities and a unique atmosphere that connects history with modern event use.



1000 pax



AV equipment



Výstaviště



www.brnoconvention.cz/prostory/bvv-vystaviste

[More info: Brno Convention Bureau](#)

Karlovy Vary Region

Venues with a story



Grandhotel Ambassador Národní dům v Karlových Varech

Grandhotel Ambassador offers a high standard of hotel, spa and socio-cultural services. The hotel's Art Nouveau corner building provides guests with first-class accommodation in 83 four-star Superior rooms, with a fully equipped balneo and wellness centre and its own parking.

Grandhotel Ambassador Národní dům is an Art Nouveau landmark designed by the famous architects Fellner and Helmer. The building in the historic centre of Karlovy Vary has a separate social section (Národní dům) and hotel section (Grandhotel Ambassador). It also includes top-class spa facilities, given an exclusive touch by the renowned thermal spring water.



Orpheum Ceremonial Hall

Exceptional in its architecture, the historic Orpheum ceremonial hall, with a capacity of up to 700, continues the tradition of a world-famous variety theatre. The hall is suitable for congresses, presentations and social events, balls, performances and concerts. It offers various seating layout options and conditions for using modern technology.



Orpheum Hall: 700 persons



AV equipment available



T.G.Masaryka 1088/24, 360 01 Karlovy Vary



www.grandhotel-ambassador.cz/eventy

[More info: Carlsbad Convention Bureau](#)

Poštovní Dvůr in Karlovy Vary

The historic Poštovní dvůr (Post Courtyard) monument is located on the edge of the spa district of Karlovy Vary.

The building is constructed in the spirit of Classicism. In the interiors, however, you will also encounter elements of Romanticism. Here you will find, for example, social halls, a dance pavilion with a covered terrace, a garden pavilion and other beautiful spaces.



Several representative rooms gradually came into being in Poštovní dvůr, most notably the dominant space on the first floor known as the Prussian Hall. It was ceremonially opened at the start of the spa season in 1818, and that same year hosted two concerts by the famous Italian singer Angelica Catalani. Ten years later, the virtuoso Niccolò Paganini visited Karlovy Vary and performed his violin concerto in Poštovní dvůr.

On 20 July 1894, as part of the regular Friday concerts, Dvořák's Symphony No. 9 in E minor "From the New World" was performed for the first time on the European continent in Poštovní dvůr, played by the Karlovy Vary Spa Orchestra under conductor August Labitzky.



300 pax



AV equipment: external



Slovenská 309, Karlovy Vary



postovnidvur.cz

[More info: Carlsbad Convention Bureau](#)

Grandhotel Pupp

An iconic hotel that has long been synonymous with hospitality, first-class service and entertainment. An architectural gem of Karlovy Vary with an unrepeatably genius loci since 1701. A place where history was written. This is Grandhotel Pupp.

Since 1701, when the Saxon Hall was built, the story of Grandhotel Pupp began to be written in Karlovy Vary. Over more than three centuries, the hotel has become one of the symbols of the spa town and a venue for important social and cultural gatherings.

Grandhotel Pupp is gradually undergoing sensitive renovation and offers a programme of cultural events that builds on its rich history, giving guests unique experiences and atmosphere.



Six generations of the Pupp family developed and shaped a unique work that has endured through the ages. A long tradition, a history full of twists, and an architecturally unique building make Grandhotel Pupp a place with no equal in the world.

The Beethoven Salon at Grandhotel Pupp has a historical foundation: it stands on the site of the former "God's Eye" house, where Beethoven once stayed. Beethoven's stay in Karlovy Vary is also linked to a significant cultural event: he organised a charity concert for the spa town of Baden, which had been struck by fire, enlisting the renowned violinist from Turin, Giovanni Battista Polledro, who had just arrived at the Hot Spring, and on 6 August 1812 at 6 p.m. a grand concert was held in the Bohemian Hall (today Grandhotel Pupp).



400 pax



AV equipment available



Mírové náměstí 1. Karlovy Vary



pupp.cz

[More info: Carlsbad Convention Bureau](#)

Casino Community House in Marianske Lazne

The Casino Community House, built between 1899 and 1901 in the Italian Neo-Renaissance style, is located in the spa district near the colonnade and parks. Marianske Lazne's cultural life unfolds at the Casino Social House, which hosts concerts, conferences and other cultural events.

The main building consists of three halls, with the central Marble Hall flanked by two wings containing side halls of lower ceiling height. Entry to the halls is from the north side, through a projecting building with a ceremonial staircase and social spaces.



The name "Casino" Community House can be somewhat misleading - the building never served as a gambling venue. The most magnificent part of the complex is the Casino space, consisting of several halls: the Marble Hall, the Red Hall, the Pink Hall and the Mirror Hall.

In August 1904, Emperor Franz Joseph I met representatives of the town and the entire region at the Casino. That same year, the Czech singer Ema Destinnová performed here to great acclaim before a German audience. But the Casino's greatest heyday came in 1946, when it hosted the 1st International Film Festival, known today as the Karlovy Vary International Film Festival.



450 pax



AV equipment available



Reitenbergerova 95/4, 353 01 ML



www.ensanahotels.com/marianske-lazne
www.marianskelazne.cz

[More info: Carlsbad Convention Bureau](#)

Community House in Frantiskovy Lazne

The Community House (also formerly known as the "Spa House") dominates the innermost spa centre. The original Social House building was the first public structure built after the founding of the spa town.

According to contemporaries, the Classicist building and its hall outshone all similar buildings in the surrounding spa towns. In the spirit of the times, Frantiskovy Lazne builder Gustav Wiedermann designed a representative Neo-Renaissance building with a spacious interior.

From the very beginning, the hall has been used as a venue for congresses, balls and important social events.



Goethe and Frantiskovy Lazne

Notable guests who visited this building include Russian marshal Blücher and Count Nostitz in 1816, Count Kašpar Šternberk in 1837, and Johann Wolfgang Goethe in 1808, who felt at home in Frantiskovy Lazne and liked to return here.



300 pax



AV equipment available



Národní 1. Františkovy Lázně



www.pawlik-aquaforum.cz

[More info: Carlsbad Convention Bureau](#)

Hotel Imperial

The five-star Hotel Imperial offers its guests a high standard of service and is a three-time winner of the World Travel Awards for Best Spa Hotel in the Czech Republic.

Hotel Imperial is an important host for a variety of corporate and social events. It has a large number of halls and function rooms. The rooms can be interconnected, making Hotel Imperial suitable for hosting small, medium and larger events.



There are truly very few spa hotels in the world that have hosted as many distinguished personalities as Hotel Imperial. Its famous guests have included members of the extensive Rothschild banking family and the Polish noble Potocki family. Other guests included Russian Grand Duke Paul, composer Richard Strauss, Hollywood stars Douglas Fairbanks and his wife Mary Pickford, princes, maharajas, and the most influential industrialists of their time and, last but not least, politicians and presidents, such as Tomáš Garrigue Masaryk and Czech President Václav Klaus. Hotel Imperial itself owes its fame to Lord Richard Westbury.



200 pax



AV equipment available



Libušina 1212. KARLOVY VARY 36001



www.spa-hotel-imperial.cz

[More info: Carlsbad Convention Bureau](#)

Vysočina Region

Venues with a story



Dalešice Joint-Stock Brewery

The history of the Dalešice Brewery dates back to the 17th century, but its most famous moment came in May 1980, when Jiří Menzel filmed Hrabal's famous story Cutting It Short here.

The brewery has conference facilities, stylish accommodation, a restaurant and the brewing operation itself - all in one place, making it an ideal venue for corporate events. Spaces for up to 150 people are available: the Brewery Hall and the Blue Salon, including technical equipment. The brewery provides all-day catering, and garden access with grilling options is available.



The brewery garden is an ideal place to clear your mind and lift your spirits. During the tourist season, a variety of cultural events take place here. The beer brewed at the Dalešice brewery follows an old brewing recipe and can be tasted in the stylish brewery pub. Accommodation capacity is 55 beds.



135 pax



AV equipment available



Dalešice 71



www.pivovar-dalesice.cz

[More info: Vysočina Region Convention Bureau](#)

Silver House in Jihlava

A grand burgher house reflecting the town's wealth during the Jihlava silver rush. The Silver House in Jihlava has recently undergone a major transformation and impresses with its elegantly renovated interiors.

Social events and occasions are served by the Music Hall with a capacity of 50, and the smaller historic Painted Hall with a salon for 30.

The newly reconstructed Silver House also provides space for a tea room that can arrange stylish catering. Inside there are exhibition spaces and halls for concerts, lectures and other events. It also houses a guest apartment for accommodating distinguished visitors.



In the cellar, visitors can see a unique exhibition referencing the medieval history of Jihlava connected with silver mining and coin minting. The exhibition highlights the fact that Jihlava was the oldest royal town with silver mining and coin minting in the Czech lands.

Guided tours of the Silver House can be used as an accompanying programme.



80 pax



AV equipment



Masarykovo náměstí 21, Jihlava



www.dojihlavy.cz/mista/stibrny-dum

[More info: Vysočina Region Convention Bureau](#)

Kvasetice Chateau

At Kvasetice Chateau, history is wedded to luxury, and elegance to hospitality. This charming building serves as a meeting place accompanied by charm and top-class gastronomy.

Construction of the chateau began in 1864; in 1920 and 1921 it was extended with a greenhouse, a winter garden and an English park. During World War II the building was occupied by the German administration, nationalised after the war and turned into an insemination station and farm. In the 1970s the estate was bought by the national enterprise Pleas Havlíčkův Brod, and after November 1989 the chateau was returned to the descendants of its original owners. Its most recent owner was the church. From a state of disrepair that had condemned it to demolition, it has, thanks to its present-day owner, undergone a complete restoration and is still being renovated.



The chateau does not offer extensive conference facilities, but provides an alternative in the form of a salon for 30 people, an outdoor courtyard and a garden. It includes a hotel, a restaurant and an experienced team ready to ensure your corporate event turns out exactly as you envisioned, with a perfect combination of functionality and exclusivity.



30 persons; weather permitting, outdoor courtyard and garden also available



AV equipment



Kvasetice 20, Květinov-Havlíčkův Brod



www.zamek-kvasetice.com

[More info: Vysočina Region Convention Bureau](#)

Továrna Vír (Vír Factory)

Továrna Vír is a unique venue for hosting all kinds of events. Thanks to the sheer scale of the complex, it offers spacious and architecturally attractive conference facilities for organising corporate meetings, training sessions or social events.

The original mill was bought in 1911 by Sigmund Wallner. His partner was Josef Rotter of Brno, after whom the factory was named until recently. In 1913 they converted the mill to textile production, to which engineering production was later added. About 100 years later, operations at the factory ceased and the site began to fall into disrepair. In 2021 it was bought by the company Údolí Svatky, which began the process of reviving the new Factory with environmentally sensitive use of natural resources.



Quality, affordable accommodation, an industrial-style pub, a canteen, facilities for conferences, meetings and corporate events, the Adrex Base Camp rental shop and a Tourist Information Centre. The revitalised Továrna Vír complex offers several facilities focused on various services, with further parts of the Factory gradually being cleaned and repaired so you can choose the most suitable space for your presentation needs.



150 pax



AV equipment



Vír 1



www.tovarnavir.cz

[More info: Vysočina Region Convention Bureau](#)

Třešť Chateau

Třešť Chateau offers a variety of conference spaces in the inspiring setting of a Neo-Renaissance chateau, where the working programme naturally combines with comfort, gastronomy and relaxation.

Třešť Chateau is connected to the writer Franz Kafka, who stayed in Třešť between 1900 and 1907 with his uncle Siegfried Löwy, a local doctor who later appears in Kafka's work in the story A Country Doctor. According to some speculation, it was Třešť Chateau itself that actually inspired him to write his cult work The Castle.



Třešť Chateau is an ideal venue for conferences, training sessions, seminars, workshops and corporate events in the Vysočina region. It offers representative conference facilities for up to 130 people, smaller salons, accommodation, a restaurant, wellness facilities and a chateau park, making it easy to organise a professional programme, team building and a social evening all in one place. Thanks to the combination of professional facilities and a peaceful natural setting, it is suitable for both single-day and multi-day corporate events.



130 pax (capacity of the largest hall)



AV equipment available



Dr. Richtra 234, Třešť



www.zamek-trest.cz

[More info: Vysočina Region Convention Bureau](#)

Hradec Králové Region

Venues with a story



Častolovice Chateau

In the Orlické Mountains, within a short distance, you will find four privately owned chateaux situated on the Orlice river - which is why the river is called the "Czech Loire". One of them is a chateau belonging to the Sternberg family.

Častolovice Chateau is a destination not only for tourists but also for corporate and cultural events. Its interior spaces offer four halls with capacities ranging from 40 to 250 people, while outdoor areas, especially the courtyard, can also be arranged by agreement. This is ideal for concerts and other cultural programmes.

In the chateau park you can see more than 200 varieties of roses, walk along a hundred-year-old lime tree avenue, and admire white fallow deer and Dybowski deer. Animal lovers will certainly appreciate the chateau menagerie, where you can also pet the animals.



up to 250 persons



Wi-Fi and lighting technology, everything else by individual arrangement



Masarykova 1, Častolovice 517 50



www.zamek-castolovice.cz

[More info: Hradec Králové Region Convention Bureau](#)

Nový zámek Kostelec nad Orlicí (New Chateau)

The Kostelec chateau lies just a short distance from the one in Častolovice. It belongs to the Kinský family and is inseparably linked to Count František Kinský.

The New Chateau in Kostelec nad Orlicí is one of the region's important cultural centres and a suitable venue for smaller social events. It lies on the edge of a small town, and the chateau building is hidden amid a beautiful English park, guaranteeing a wholly intimate setting even for outdoor events.

The Mirror Hall of this unique Empire-style chateau can hold up to 100 people, while the Kinský Gallery on the upper floor of the chateau holds around 50.



on request



equipment by individual arrangement



Komenského 266,, 517 41, Kostelec nad Orlicí



www.zamekkostelecno.cz

[More info: Hradec Králové Region Convention Bureau](#)

Holovousy Chateau Estate

The 16th-century chateau in Holovousy is in the hands of a private investor, which means you can hold all kinds of events here.

The chateau's dominant feature is its 8,000 m² park. By arrangement, you can have a party tent set up in the park and hold a summer wedding, festival or market there. Since the chateau can accommodate up to 45 guests, its spaces can also be used for corporate team-building events, exercise classes or sports training camps. You can rent two historic halls with capacities of 60 and 70 people respectively, both equipped with modern congress technology.



70 persons



Wi-Fi, data projector, projection screen, flip chart



Holovousy 1, 508 01 Holovousy



www.zameckyarealholovousy.cz

[More info: Hradec Králové Region Convention Bureau](#)

Officers' Club (Důstojnická beseda)

The fortress town of Josefov holds one great secret. It is the town's most representative space - the Officers' Club Hall - PDA.

The Officers' Club is located in a former fortress building and was ceremonially opened in 1900. The magnificent Art Nouveau hall with impressive stucco decoration was connected to the original military casino and hosted top-tier social events - military balls and dances, theatre performances and concerts.

The Officers' Club still enjoys a rich social and cultural life today. Popular balls and dances are held here, along with theatre performances. Now, you can rent it for your own private events.



216 pax



equipment by arrangement



Lidická 6, 551 02 Jaroměř 3-Josefov



www.divadlojaromer.cz

[More info: Hradec Králové Region Convention Bureau](#)

Čerych Villa

A newly renovated villa in Česká Skalice, given a new lease on life by the Kaplický Centre, awaits your visit!

Čerych Villa is not only a beautiful historic monument with a breathtaking garden, but above all a space with enormous creative potential. This unique building in the Art Deco and Rondocubist style, the work of famous architect Otakar Novotný with a garden by Josef Kumpán, offers an ideal setting for creating something truly unique. Václav Havel himself chose this gem as the filming location for his last work, the film Leaving. The villa long awaited a new impulse, which finally came with the visionary idea of the Kaplický Centre in 2022 and its reopening in autumn 2025. The villa also includes newly renovated en-suite rooms, a fully equipped kitchen, a gallery and a state-of-the-art cinema.



60 pax



fully equipped with modern facilities



Křenkova 477, 55203 Česká Skalice



www.kaplicky.cz

[More info: Hradec Králové Region Convention Bureau](#)

Northern Bohemia Region

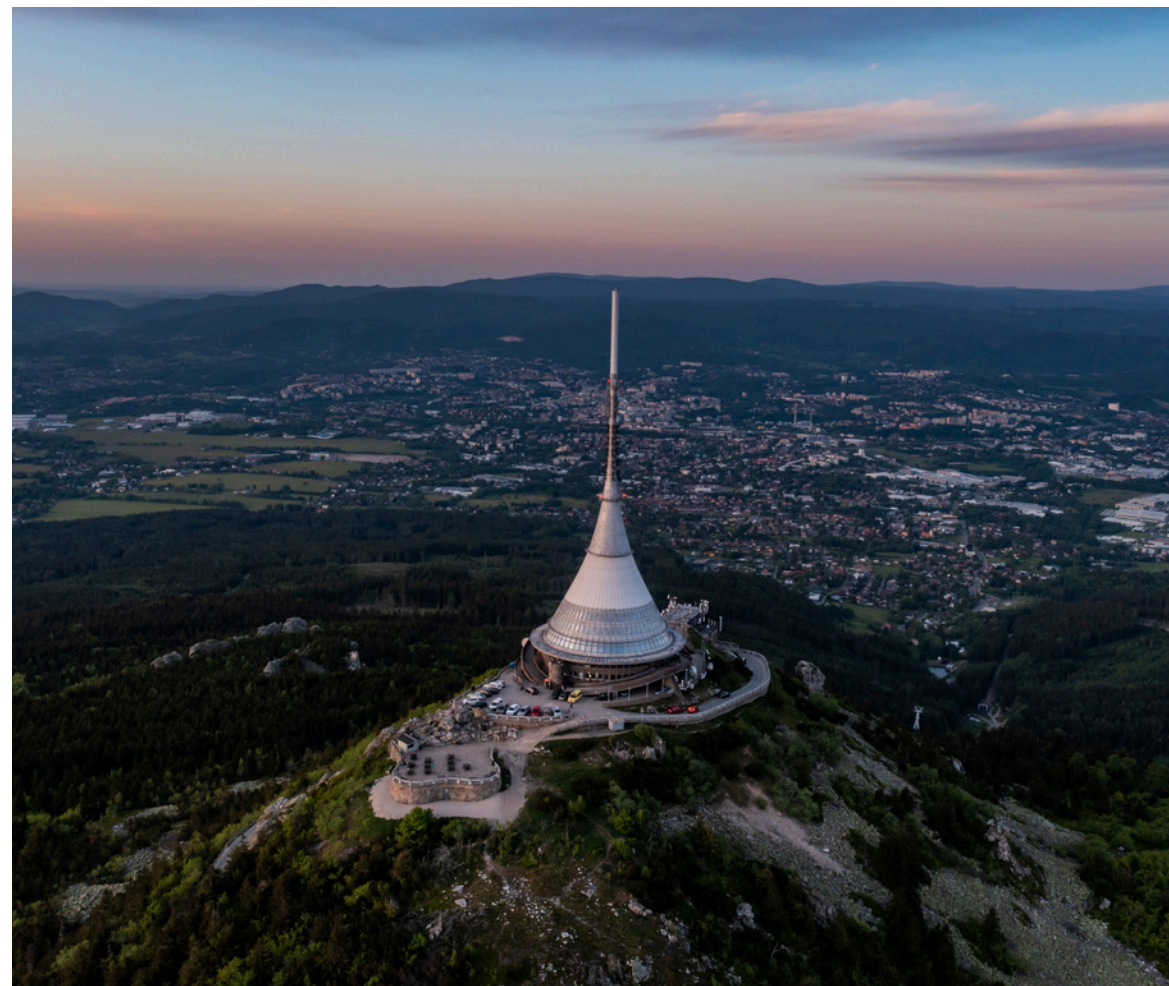
Venues with a story



Hotel Ještěd

Ještěd is an original structure, admired both at home and abroad. At an altitude of 1,012 metres above sea level rises a tower built in the 1970s by architect Karel Hubáček, housing a television transmitter, a restaurant and a unique hotel.

The transmitter tower with hotel was opened in 1973 and remains one of the most striking examples of modern architecture in the Czech Republic. Its unique shape flows seamlessly into the mountain's silhouette and has become a symbol of the entire region. Because of its significance, the building was awarded the prestigious Auguste Perret Prize and has gradually become not only a technical landmark but also a popular destination for visitors from the Czech Republic and abroad.



The hotel offers flexible facilities for different types of events depending on their size and character. For exclusive events, the entire building can be reserved for a closed party, with a buffet capacity of up to 250 people and accommodation for up to 50 guests in rooms of various categories. The restaurant is suitable for brunches, coffee breaks, tastings or evening buffets for up to 120 people, operating alongside the hotel section. For smaller, more formal meetings there is a salon for a maximum of 12 people, renovated in a 1970s style, offering an intimate setting for negotiations, presentations or celebratory dinners.



up to 250 persons



AV equipment available



Horní Hanychov 153, Liberec, 460 08



www.jested.cz

[More info: Northern Bohemia Convention Bureau](#)

Ferdinand Porsche's Birthplace

Ferdinand Porsche's birthplace in Vratislavice nad Nisou offers an authentic glimpse into the early life of one of the most important figures in the automotive world, combining a historical story with a modern presentation.

The house recalls the early life of one of the key figures of the automotive industry, in the context of Czech industrial traditions and technical development. The building, owned by Škoda Auto, underwent extensive reconstruction completed in 2016, restoring it to its historical appearance from the time of Porsche's birth. The current exhibition is conceived in a modern, interactive way, linking history with themes of the future of mobility, complemented by a service building with visitor facilities.



The conference facilities in Vratislavice nad Nisou are intimate and especially suitable for smaller events, workshops or closed-door meetings. A modern, well-equipped meeting room for around 15 people is available on the first floor with access to an outdoor terrace overlooking the surrounding landscape. In summer months the outdoor areas of the grounds can also be used, while the building's interior serves in case of bad weather. The necessary equipment and technical support from a professional team are a given. A guided tour of the exhibition, or one using a special app, can also be arranged as part of the event.



15 pax



AV equipment available



Tanvaldská 38, Liberec - Vratislavice nad Nisou



museum.skoda-auto.cz/porsche-house

[More info: Northern Bohemia Convention Bureau](#)

Bernštejn Chateau Hotel & Golf Resort

The historic Bernštejn Chateau estate offers extensive facilities for corporate events, where a tranquil atmosphere naturally combines with opportunities for active leisure.

Bernštejn Chateau today represents a place where a historic building naturally combines with contemporary use. A sensitive restoration has returned its original character while opening it up to new activities that respect its atmosphere. The estate also includes leisure facilities such as tennis and golf, which complement the overall experience of the place. Emphasis is placed on a tranquil setting, a personal approach and an authentic atmosphere, allowing the estate to retain its natural character while offering facilities that feel both relaxed and exceptional.



The conference facilities consist of several thematically distinct spaces that can be used individually or in combination depending on the nature of the event. Seminar rooms suitable for training sessions and workshops are available, as well as representative halls for social events or evening programmes. The capacity of individual spaces ranges from small groups to dozens of participants, and the chateau's outdoor grounds can also be used for an informal part of the programme. The estate also offers on-site accommodation for 70 guests, allowing multi-day events to be held without the need to travel elsewhere.



up to 100 persons



AV equipment available



Nový Berštejn 10, Dubá, 472 01 Doksy



www.berstejn.com

[More info: Northern Bohemia Convention Bureau](#)

Fabrika 1861

Fabrika 1861 is an industrial space with a rich history, transforming a former production site into an original venue for corporate events with an unmistakable atmosphere.

The space was created by converting a historic 19th-century industrial estate originally linked to textile production. The building is currently undergoing a gradual reconstruction that sensitively preserves its industrial character while giving it new use. The transformation of the site is still ongoing, gradually revealing its potential for contemporary use without losing its original character. The result is an authentic environment where the spirit of the past is still palpable and which retains the strong atmosphere of a former factory.



Facilities for corporate events include flexible spaces of various sizes, suitable for meetings, conferences and larger social events.

Both historic and modern interiors are available, with a capacity of up to 800 people, plus outdoor areas for 4,500 visitors. The estate provides ample parking, flexible halls and facilities for accompanying activities. The spaces can be used independently or in cooperation with professional suppliers who can deliver a complete, tailor-made event including programme, technology or catering.



up to 800 persons



AV equipment: external



Bavlnářská 137, Podmoklice, Semily 513 01



www.fabrika1861.cz

[More info: Northern Bohemia Convention Bureau](#)

LASVIT Nový Bor

The headquarters of the Czech glass and design company LASVIT connects the long-standing local glassmaking tradition with modern architecture and design.

Two hundred years ago, master glassmakers already lived in log houses in Nový Bor. LASVIT renovated the historic houses and moved its headquarters here in 2019. The complex also includes two modern new buildings - the Black House and the Glass House - two buildings that serve as a metaphor for darkness and light. The glass house, visible from afar on the street, is covered with tiles inspired by traditional slate cladding. LASVIT developed this glass façade to reference regional traditions while also setting modern trends. According to LASVIT founder Leon Jakimič, the glass house is meant to be a unique beacon in the town and a symbol of the renewal and new self-confidence of glassmaking in the region.



Every Friday, the LASVIT headquarters opens to the public for guided tours, where visitors can view the interiors of the Glass House, historic log houses and workshops where luxury chandeliers and other artistic glass installation elements are created. Moreover, the full ticket price from the tours is donated to the LASVIT Foundation.

This year, a new design café, LASVIT Café, is opening right at the company's headquarters, offering not only specialty coffee but also seating inside a log house with an unconventional view of the Black House and Glass House.



Tour 10 persons, café 20 persons



AV equipment available



Palackého náměstí 170, 473 01 Nový Bor



www.lasvit.com

[More info: Northern Bohemia Convention Bureau](#)

Moravian-Silesian Region

Venues with a story



Johann Gregor Mendel's Birthplace

The birthplace in Vražné connects the history of a world-renowned scientist with the atmosphere of the Moravian countryside and surprisingly versatile spaces for gatherings.

The estate offers a combination of a museum exhibition, a gallery, lecture spaces and a social hall in the Great Barn, which is ideal for seminars, workshops, smaller conferences or fashion shows.

A major asset is also the authentic farmyard and garden, which create a unique backdrop for informal gatherings, concerts or wedding ceremonies.



For multi-day events, accommodation for up to 45 people is available, including social facilities and a kitchenette.

The whole complex feels very distinctive: history, rural architecture and the tranquillity of the Poodří landscape give every event a completely different atmosphere than classic conference venues.



up to 200 persons



AV equipment available



Hynčice 69. 742 34, Vražné



mendel-rodnydum.vrazne.cz

[More info: Ostrava Convention Bureau](#)

In Freud's Footsteps

Sigmund Freud's birthplace in Příbor offers an unusual idea for corporate tours and a supporting programme for congresses or incentive trips.

Sigmund Freud's birthplace is an ideal stop for organisers of congresses and corporate events looking for an original cultural programme off the traditional tourist routes. The interactive exhibition presents the life and work of the founder of psychoanalysis in a modern, accessible way that appeals to both Czech and foreign delegations.

The tours are particularly suitable for smaller groups and VIP clients as part of incentive programmes or activities accompanying conferences.



The capacity of the building suits smaller groups, allowing visitors to enjoy a more personal atmosphere and a more detailed presentation. An advantage is its location right in the historic centre of Příbor and the possibility of combining it with other experiences in the Beskydy and northern Moravia region.

The museum operates year-round and offers flexible options for group bookings.



15-20 persons, option to split into groups



by arrangement



Zámečnická 117, 742 58 Příbor



www.freudmuseum.cz

[More info: Ostrava Convention Bureau](#)

Stylish Events in a Historic Villa

Villa Café in Krnov offers an elegant setting for smaller meetings and accompanying programmes.

The historic villa combines an intimate atmosphere with quality gastronomy and modern facilities.

Separate salons are available, as well as the option to rent the entire restaurant, allowing for the organisation of workshops, training sessions, presentations or VIP networking events. The spaces include two salons and a restaurant suitable for closed corporate programmes.



The facilities also include projection equipment. Organisers will appreciate the combination of quality gastronomy, a stylish setting and a peaceful location.

Another advantage is the option to combine a work programme with a gastronomic experience or evening networking in the authentic atmosphere of a historic villa. Events can also be held in the villa's garden.

Salon: 25 people

Restaurant: 35 people

Billiards Salon: 12 people



75 persons across several salons



AV equipment available



Zacpalova 964/1, 794 01 Krnov



villacafe.cz

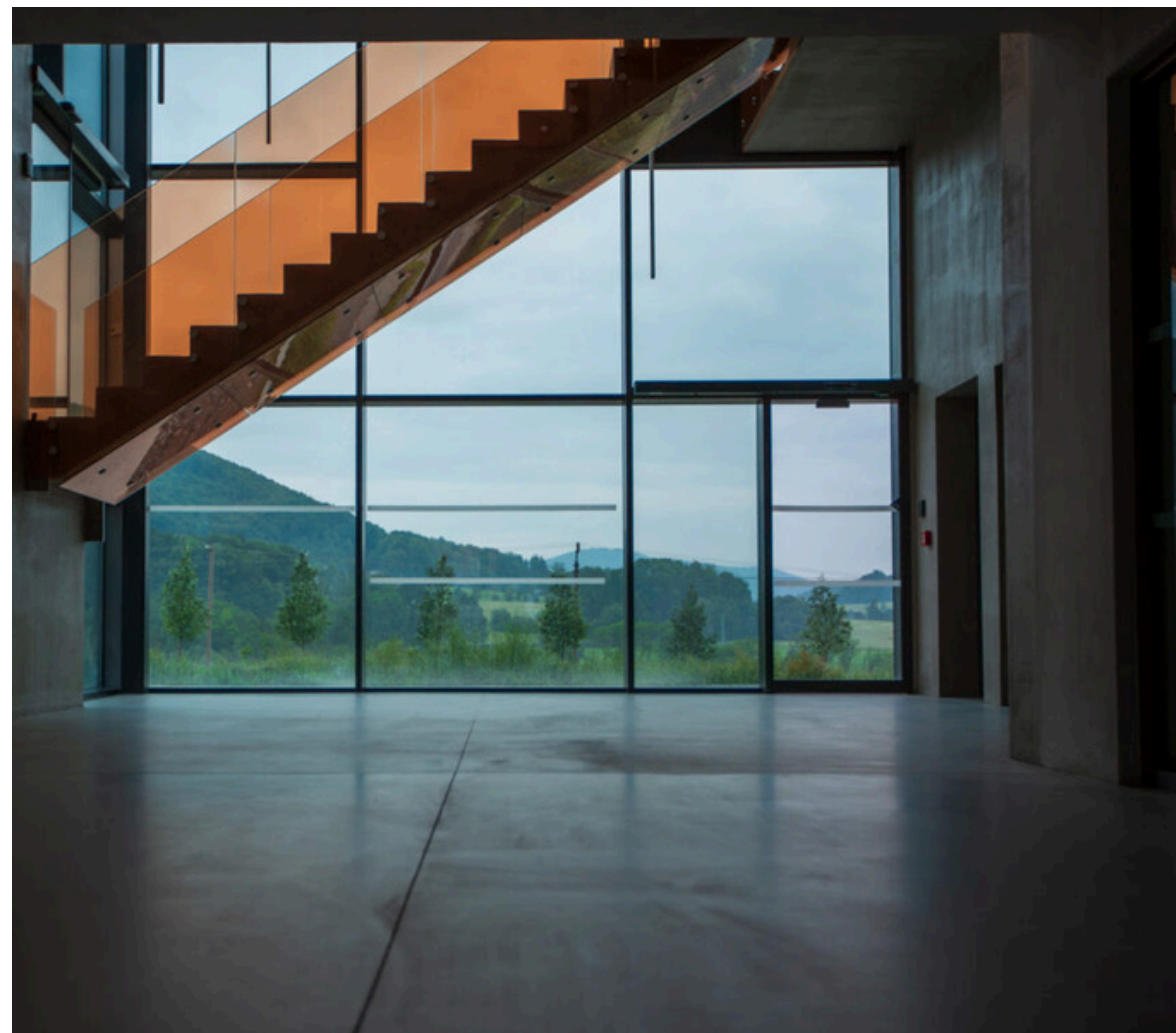
[More info: Ostrava Convention Bureau](#)

A place with a genius loci that inspires

The Hukvaldy Farmstead offers an original setting for seminars, corporate meetings and accompanying congress programmes in the heart of Hukvaldy.

The sensitively reconstructed Hukvaldy Farmstead represents an attractive MICE location for organisers seeking an original venue with a story. The origins of the Hukvaldy farmstead may date back as far as the founding of Hukvaldy Castle, in the 13th century.

An advantage of the location is its connection to the iconic Hukvaldy deer park, one of the oldest game reserves in the Czech Republic, offering an ideal setting for accompanying outdoor programmes or guided walks.



The location is also closely linked to the figure of Leoš Janáček, who was born in Hukvaldy and whose musical legacy is still commemorated here today through concerts and festival events.

The programme can include a visit to Janáček's Trail, the statue of the Cunning Little Vixen, or cultural events inspired by the composer's work.



number of persons by arrangement



AV equipment available



Hukvaldy 211, 739 46 Hukvaldy



hukvaldskydvur.cz

[More info: Ostrava Convention Bureau](#)

A First Republic-era space

Villa Grossmann expands the range of MICE venues with an elegant setting for smaller events and congress programmes.

The renovated Villa Grossmann offers attractive facilities for smaller corporate events, seminars, workshops and VIP programmes in the centre of Ostrava. This historic building from the 1920s combines representative architecture with an intimate atmosphere ideal for networking, presentations or professional meetings outside classic conference venues.

Guided tours of the villa are also part of the offer. The spaces are suitable for events of up to approximately 40 people, depending on the type of layout.



Organisers will appreciate the opportunity to combine a work programme with a cultural experience in authentic First Republic-era interiors. The villa is easily accessible from the centre of Ostrava and connects readily with other industrial and cultural sites in the region.

Thanks to its atmosphere, it represents an interesting alternative to classic hotel function rooms.

An accompanying piano performance can be arranged on request.



40 pax



AV equipment available



28. října 1674/131, 702 00 Moravská Ostrava



www.vilagrossmann.cz

[More info: Ostrava Convention Bureau](#)

Olomouc Region

Venues with a story



Fort Křelov XVII.

During the Thirty Years' War, Olomouc was captured by the Swedish army of General Torstensson. It was later occupied again by the Prussian king Frederick II during the War of the Austrian Succession. Following these two successful conquests, a new bastion fortress was built under Maria Theresa, designed by engineer Pierre Philippe Bechade de Rochepine, between 1742 and 1757. It proved its worth as early as 1758, when Frederick II besieged the town again, this time unsuccessfully. However, the builders recognised certain shortcomings of the defensive system, and so Olomouc was transformed from a bastion fortress into a fort-based fortress.

Fort Křelov XVII is a polygonal permanent fort built between 1851 and 1854. It belongs to the first group of four small fortresses that were gradually built from 1850 onwards to the west and southwest of the Olomouc fortress. The main defensive feature of this structure is a massive earthen rampart, on which heavy artillery was positioned between earthworks.



Its outer reinforced side simultaneously formed the escarp of the moat, while the interior is fitted with casemates for sheltering defenders and safely storing supplies. At the centre of the fort lies the so-called central horseshoe-shaped redoubt, enclosed by a small courtyard.

Today the fort has become a unique place where military history meets adventure, relaxation and experiences. The entire Fort XVII complex covers 60,000 m² and is a sought-after location for hosting events of all kinds, large and small. Here you will find halls, themed workshops, a restaurant, a cinema hall, a shooting range, and accommodation is also available.

-  outdoor areas: approx. 1,000, indoor 200 persons
-  by arrangement
-  Na Fortu 1, Křelov u Olomouce
-  www.fortkrelov.cz

[More info:](#)
[Central Moravia & Jeseníky Convention Bureau](#)

Šternberk Castle

The first written mention dates back to 1269, when the castle was founded by Zdeslav of Šternberk.

The Lords of Šternberk owned it until 1397. It then passed through the hands of the nobility of the Lords of Kravaře, the Lords of Dubá and Lipá, and the descendants of George of Poděbrady. At the turn of the 17th and 18th centuries, the castle was bought by Prince Johann Adam Andreas of Liechtenstein. It remained in his family's possession until 1945.

In 1886, the reconstruction of the castle began according to a design by Viennese architect Karl Gandolph Kayser, and it was rebuilt in the spirit of Romantic Historicism. Between 1907 and 1909, a charming forest park was also created next to the castle by Viennese architect Albert Esche.

The entire castle became a luxurious residence, furnished with historical furnishings, paintings, furniture, sculptures and tapestries belonging to the House of Liechtenstein.



Šternberk State Castle is a sought-after venue for wedding ceremonies, various gatherings, concerts and corporate events. It offers a total of 5 spaces, two outdoor and three indoor.



number of persons by arrangement



by arrangement



Státní hrad Šternberk, Horní náměstí 170/6, 785
01 Šternberk



www.hrad-sternberk.cz

More info:

Central Moravia & Jeseníky Convention Bureau

Čechy pod Kosířem

The first mentions of Čechy pod Kosířem date back to 1131, when some of its fields were owned by the Olomouc Metropolitan Chapter. From 1305, the village belonged to the Dominican convent of St. Catherine in Olomouc. In the 14th century, a Gothic water fortress surrounded by two ponds stood here. The fortress fell into disuse sometime during the 15th century and was already recorded as derelict by 1512. In the second half of the 16th century, the squire Matyáš of Hartunkov built a new Renaissance fortress, probably on the site of the southern wing of today's chateau.

Between 1708 and 1716, the fortress was rebuilt into a four-wing chateau under the ownership of the Liechtenstein family.

In 1768, the residence was bought by the Portuguese Silva-Tarouca family, who owned the chateau until 1945.

Over the years, the chateau underwent two further significant reconstructions, along with the creation of an extensive English park. Between 1852 and 1853, under August Alexander Silva-Tarouca, a pseudo-Gothic orangery was built next to the chateau, designed by Vojtěch Ignác Ullmann.



During these years, Josef Mánes, a prominent Czech painter, appeared at the chateau at the invitation of its owner and spent many years of his life and work here. The place was a great source of inspiration for him, and works such as *Life at the Manor*, *Starry Night*, *The Kiss*, *Arrival of a Guest*, *By Moonlight* and *The Little Red Parasol* were created here. The friendship was further strengthened by the master personally teaching painting to members of the count's family.

Are you planning a wedding or a private or corporate event and looking for an ideal location combining the romance of a historic setting with natural beauty? The Čechy pod Kosířem chateau estate is the right place! Rentable spaces include: the Chateau Park, the chateau's Historic Interiors, the Chateau Orangery, and the Mánes Gazebo.



Capacity by arrangement



by arrangement



Mánesova 1, 798 58 Čechy pod Kosířem



www.zamekcechy.cz

More info:

[Central Moravia & Jeseníky Convention Bureau](#)

Archbishop's Palace

For more than 500 years, the Archbishop's Palace in Olomouc has been the official seat of the bishops and archbishops of Olomouc, as well as a place where history was literally made. It has hosted a long line of important historical figures who, during their visits, were generous with their praise for its architecture and furnishings. As the Polish king John III Sobieski (1629-1696) remarked shortly after its completion: "this palace could stand in the middle of Rome."

The original Renaissance palace, on the site of today's residence, was begun at the start of the 16th century by Bishop Stanislav Thurzo (bishop 1496-1540). At that time, however, the seat of the Bishop of Olomouc was not yet as extensive as it is today. The palace acquired its present form only after the Thirty Years' War, during which the city suffered greatly from the Swedish siege. What the Swedes failed to finish, a fire in 1661 sealed.

In 1664, Bishop Karl of Liechtenstein-Castelcorno arrived in Olomouc, facing the demanding task of restoring the residence. The reconstruction of the palace took six years, and the bishop invested heavily in it.



As a prince-bishop, he administered his estates and paid close attention to representation, for which he engaged prominent architects.

Based on their designs, the Archbishop's Palace was built, one of the largest buildings in the city centre.

The palace served for representative purposes and for accommodating guests, among whom was even Maria Theresa.

The palace received its current appearance and decoration after a fire in 1904; it is the largest residential building in the historic centre of Olomouc and is protected as a cultural monument of the Czech Republic. Available for rent are: the Ceremonial Hall, the Library, the Throne Room and the Angel Hall.



200 osob



dle přání zákazníka



Wurmova 9, 771 00 Olomouc



arcibiskupskypalac.cz

More info:

[Central Moravia & Jeseníky Convention Bureau](#)

Priessnitz Spa

A spa located on the northwestern edge of the town of Jeseník. Its founder was Vinzenz Priessnitz - the "Water Doctor".

As a boy in the mountains, he noticed a limping doe that kept dipping its injured leg into a small spring. Over time it stopped limping, as the leg had healed. Vincenz remembered the spring's location, and when he injured his own finger, he went there himself and the wound healed miraculously fast. Later, as an adult, he suffered a serious chest injury, and doctors declared the damage permanent and incurable. Once again, through wraps and soaking his body in this water, he recovered. His neighbours naturally noticed this and began coming to Vincenz for medical advice. He became a renowned healer who treated everything from fractures and dislocated shoulders to headaches and stomach pain. The final step was founding a treatment institute. Vincenz therefore had to seek permits from the monarchy's capital cities. He eventually obtained the necessary approvals and, in 1822, founded the world's first hydrotherapy institute.



Priessnitz, or more precisely Priessnitz Sanatorium, the main spa building founded back in 1910 in the Art Nouveau style, still dominates the surrounding area today. A setting where you can fully devote yourself to your work duties, it offers meeting spaces for 10 to 400 people and, after an active day, the chance to recharge and recover energy in a relaxing wellness centre. Several halls and salons serve for hosting events, congresses or work meetings - the Congress Hall, the Winter Garden, the Mirror Hall, the V. Priessnitz Salon, the Sofie Video Café, and the Grafenberg Dining Room.



Capacity from 10 to 400 persons



according to the client's wishes



Priessnitzova 12/299, 790 03 Jeseník



www.priessnitz.cz

More info:

Central Moravia & Jeseníky Convention Bureau

East Bohemia Region

Venues with a story



Nové Hrady Chateau, or the "Czech Versailles"

Once a ruin, today a beautiful cultural monument and an exclusive venue for corporate and social events. This is Nové Hrady Chateau near Litomyšl.

When the Kučera family bought the chateau in 1997, it was in a state of disrepair. The façades, interiors, sculptural decoration and gardens were gradually restored. The chateau, originally built by Count Jan Antonín Harbuval Chamaré between 1773 and 1777, regained its Rococo face.

Today the estate is open to the public, offering tours of the interiors and chateau gardens as well as facilities for various types of events. For conferences, training sessions or theatre performances, the hall in the chateau granary, with a capacity of up to 200 people, can be used.



Lovers of cultural experiences will appreciate the outdoor natural amphitheatre, which hosts concerts and performances under the open sky. The chateau's interiors are suitable for gala dinners and social events with a touch of luxury.



up to 200 persons, depending on the type of event and chosen space



AV equipment: projector, sound system



Nové Hrady 1, Nové Hrady, Czech Republic, 53945



www.nove-hrady.cz

[More info: East Bohemia Convention Bureau](#)

The Museum of Survivors - Archa Brněnec

Looking for a venue for your event that will leave a lasting impression? Oskar Schindler's former factory is opening to the world as a modern conference centre and a monument to courage and hope.

In a quiet valley near Brněnec, a site is coming back to life where, in 1944, more than a thousand lives were saved. Today, this authentic testimony is being transformed into the Museum of Survivors - a unique space for reflecting on human values. From spring 2026, Archa Brněnec will offer exceptional facilities for events.

The main space is a modern hall for 250 guests (with capacity for up to 400), equipped with a state-of-the-art LED wall and sound system. A teaching room is available for workshops, and a stylish café area for informal networking.



Combining a corporate programme with a tour of an exhibition that celebrates courage and responsibility through personal stories will give your event an unforgettable dimension. Brněnec is not just a memory of the past, it is an inspiration for the future. Hold your conference where one man managed to change the world.



conference hall: 250-400 persons



AV equipment: LED projection wall, sound system



Brněnec 101, 569 04 Brněnec



arksfoundation.net

[More info: East Bohemia Convention Bureau](#)

Zámecké návrší Litomyšl (Chateau Hill)

Everyone knows Litomyšl as the birthplace of Bedřich Smetana. But did you know that you can hold your event right at the very place where he was born?

The former chateau brewery complex in Litomyšl - Zámecké návrší (Chateau Hill) - is a site of historic buildings in the centre of this picturesque town, right next to the chateau listed as a UNESCO World Heritage Site. Today it is home not only to the exhibition of Bedřich Smetana's birth apartment, but also to a conference centre offering facilities for a wide range of events.

The backdrop of Renaissance sgraffito gives every event an unusual charm, while modern facilities ensure comfort for participants and organisers alike.



The main Riding Hall, with a capacity of up to 500 people, is complemented by 7 further halls and classrooms. The exceptional nature of any gathering is underscored by the local genius loci - a walk through Litomyšl can confidently be compared to touring an open-air gallery. Organisers can therefore choose from a wide range of experiences to enliven their event in Litomyšl.



4 large halls (largest for 500 persons), 3 smaller halls (100-120 persons), 4 classrooms (largest for 50 persons)



AV equipment: mobile stage and acoustic ceiling in the Jízdárna (Riding Hall), projector with screen, sound system



Jiráskova 133, 570 01 Litomyšl



www.zamecke-navrsi.cz

[More info: East Bohemia Convention Bureau](#)

Hotel Poutní dům (Pilgrim House) - a place where time stands still

On Hora Matky Boží (Mother of God Hill) in Králíky, at an altitude of 750 metres, you will find more than just conference facilities. The Pilgrim House offers rare tranquillity and the profound story of a place where "heaven touches earth".

The house's history dates back to 1850, when it began serving pilgrims. It went through periods of prosperity under the administration of the Redemptorists, a dark period of internment of monks in the 1950s, and gradual decline. After a major reconstruction completed in 2021, the building was transformed into a modern hotel that sensitively combines its historic spirit with present-day comfort.

Two spacious halls equipped with modern technology for training sessions and conferences are available for corporate clients.



The hotel offers accommodation for 88 guests and full tailor-made catering. The Pilgrim House is an ideal choice for team-building, training sessions and conferences. Recharge in the quiet of the mountain countryside and give your company a fresh start in a place with an unrepeatabe genius loci.



North Hall 65 persons, South Hall 50 persons



AV equipment: projector, flip chart, sound system



[Kopeček 2, 561 69 Králíky](#)



www.poutnidum.com

[More info: East Bohemia Convention Bureau](#)

Bohuslav Martinů Centre

In the historic heart of Polička, the birthplace of Bohuslav Martinů, the legacy of a musical genius meets, within the premises of the town museum, an inspiring setting for your corporate events.

The centre, built in 2009 to mark the 50th anniversary of the composer's death, manages unique collections related to this 20th-century classical composer. For MICE clients, it offers two entirely different spaces.

The audio-visual hall, with a capacity of 70 people, is fully equipped for conferences and training sessions, including a data projector and a Petrof concert grand piano, allowing meetings to be complemented with exclusive musical accompaniment. If you are looking for a real "ice-breaker", seat your partners at historic school desks. An authentic classroom from the turn of the 19th and 20th centuries, with period decor, offers an unconventional space for groups of up to 15 people.



The programme can be enriched with a visit to the exhibition "The Colourful World of Bohuslav Martinů" or a climb up the tower of St. James's Church, where the composer was born.



Audio-visual hall: 70 persons



AV equipment: data projector, projection screen, sound system, Petrof piano



Šaffova 112, 572 01 Polička



muzeum-policka.cz

[More info: East Bohemia Convention Bureau](#)

Pilsen Region

Venues with a story



Semler Residence - Loos Interiors Pilsen

An icon of modern living,
and Adolf Loos's
interwar avant-garde

The Semler Residence is one of Adolf Loos's most important works in Europe and an exceptionally authentic example of his "Raumplan" concept, which fundamentally transformed the understanding of living space in the 20th century. It was built for the Semler family at a time when Pilsen was experiencing strong economic growth and the cosmopolitan atmosphere of the First Republic, and it reflects the lifestyle of the era's entrepreneurial elite, connected to European trends in modern architecture. The villa's interior is a unique labyrinth of spaces emphasising function, proportion and individual experience, and it still feels remarkably contemporary today.



Thanks to its intimacy and architectural value, and its strong architectural signature, the Semler Villa offers an exceptional setting for smaller MICE formats with an emphasis on content, focus and quality of dialogue. It is ideal for executive meetings, board meetings, design and innovation workshops, strategic offsite events or intimate networking. The space naturally fosters concentration, discussion and creative thinking, while giving participants the unique experience of being in one of the most important interiors of modern architecture in Central Europe.



up to 60 persons in the largest hall



complete AV equipment



Klatovská třída 110; 301 00 Plzeň



www.semmler.cz

[More info: Pilsen Region Convention Bureau](#)

Měšťanská Beseda Plzeň

A space of urban elegance and First Republic atmosphere

Měšťanská beseda is one of Pilsen's most important social buildings and remains to this day a symbol of the period when, thanks to industry, entrepreneurship and rapid development, the city became one of the key centres of the monarchy at the time. This representative Art Nouveau building was created as a meeting place for Pilsen's urban elite, entrepreneurs and public figures, and to this day retains the atmosphere of a refined Central European setting inspired by Vienna and Prague at the turn of the 19th and 20th centuries. Its historic halls, detailed architectural craftsmanship and location right in the city centre create a setting that naturally enhances the representative character of events and their aesthetic dimension.



Thanks to the combination of historic character and modern technical facilities, Měšťanská beseda is an ideal venue for gala evenings, cultural and professional conferences, economic forums, celebratory receptions or urban networking. A major advantage is also its immediate connection to Pilsen's cultural and social life, which lends events an authentic urban energy and prestigious character.

The space offers an elegant alternative to classic conference hotels and allows events to be held in a setting firmly linked to the city's identity and its period of greatest prosperity, while also offering a high degree of flexibility for contemporary event formats.



up to 800 persons in the largest hall



complete facilities + AV technology



Kopeckého sady 59/13; 30100 Plzeň



www.mestanskabeseda.cz

[More info: Pilsen Region Convention Bureau](#)

Žinkovy Chateau

A romantic gem of southern Pilsen region with informal elegance

Žinkovy Chateau represents a unique venue combining the romantic atmosphere of a noble residence, an authentic genius loci and quality facilities for smaller MICE events. The originally Baroque chateau was rebuilt at the end of the 19th century by the renowned Viennese architects Fellner and Helmer into a representative pseudo-Renaissance form, giving it today the feel of an elegant Central European aristocratic residence set within a landscape of ponds and a chateau park. The site's striking character is completed by historic salons, a Neo-Gothic chapel, original chateau interiors and the legacy of Karl Škoda, whose work spaces were part of the chateau.



Thanks to a congress hall, accommodation in apartments and cottages, and its own restaurant as well as outdoor activity options, Žinkovy Chateau offers an ideal setting for workshops, management meetings, executive retreats, smaller conferences or networking events. A major advantage is the combination of privacy, informal elegance and an authentic atmosphere that fosters creativity, dialogue and informal gatherings outside the usual corporate setting. Events here gain a distinctive character and a broad experiential dimension connected with the history and landscape of southern Pilsen region.



40 persons in the largest hall



complete equipment with AV technology



Žinkovy 88; 335 54 Žinkovy



www.zamek-zinkovy.cz

[More info: Pilsen Region Convention Bureau](#)

Zbiroh Chateau

An aristocratic genius loci linked to Alfons Mucha and Czech history

Zbiroh Chateau is one of the most striking historic venues in the Pilsen region and a unique blend of aristocratic tradition, Czech cultural heritage and professional event facilities. The story of the place is linked to figures such as Emperor Rudolf II and Alfons Mucha, who created part of his Slav Epic here, and which to this day lends it an exceptionally strong atmosphere of inspiration, creativity and prestige. The historic estate, surrounded by the Křivoklát region's landscape, creates an authentic setting with a strong genius loci, capable of turning an ordinary conference or corporate meeting into a powerful experience.



Thanks to the combination of historic halls, hotel facilities, wellness, professional event infrastructure and outdoor activity options, Zbiroh offers ideal conditions for a wide range of MICE events - from leadership summits to luxury conferences and gala evenings, to international networking or strategic top-management meetings. A major advantage is also the enclosed estate, providing a high degree of privacy and exclusivity.

Zbiroh Chateau manages to combine a representative feel and high comfort with an authentic historic atmosphere without feeling formal or corporate, making it one of the most attractive and memorable event venues in the region.



up to 300 persons in the largest hall



complete AV technology



Zbiroh 1; 338 08 Zbiroh



www.zbiroh.com

[More info: Pilsen Region Convention Bureau](#)

Great Synagogue in Pilsen

A place where exceptional architecture meets a powerful story

One of the largest synagogues in Europe and one of the most striking symbols of Pilsen's cultural history. This monumental Neo-Romanesque building with Oriental elements represents a unique blend of architecture, identity and historical memory in Central Europe.

The Great Synagogue is not just a historic monument but a powerful venue for events with a deeper cultural and social dimension. The genius loci of the place creates an exceptionally strong atmosphere for gatherings, dialogue and representative social events.



Thanks to its monumental interior, exceptional acoustics and high architectural value, the Great Synagogue is exceptionally well suited for representative MICE events with a cultural, social or values-based dimension - from conferences, leadership meetings and international networking to gala evenings, concerts, cultural diplomacy or human rights events. Events here gain a unique emotional dimension and an authentic atmosphere that ordinary conference venues cannot offer.



up to 2,500 persons



complete AV technology available



Smetanovy sady 5; Plzeň 301 00



www.zoplzen.cz

[More info: Pilsen Region Convention Bureau](#)

Central Bohemia Region

Venues with a story



Volman Villa

The generous spaces of the villa and the adjoining park provide unique conditions for social gatherings.

Factory owner and patron Josef Volman dreamed up this impressive villa in an extensive park overlooking the romantic landscape of the Elbe river in Čelákovice, 20 km east of Prague. One of the most beautiful and expensive residences of the First Republic was designed for him between 1938 and 1939 by the young avant-garde architects Karel Janů and Jiří Štursa.

The magnificent villa estate is an outstanding example of interwar modern living, the best of Czech functionalism, and the architecture and ideas of Le Corbusier, who was a great inspiration and role model for the architects.



Guests can choose from several corporate event packages: 1. Brunch at the Villa (a villa brunch is an ideal format for a morning meeting, strategic discussion or smaller presentation. Capacity: 10-30 guests), 2. Afternoon Tea (a private guided tour of the villa combined with refreshments in the living room, accompanied by gentle piano music.

An informal yet refined format for team gatherings, client events or partner appreciation. Capacity: 10-30 guests), 3. A tailor-made event according to the client's requirements.



70 persons (120 persons for an outdoor event)



extensive production facilities



[Stankovského 1200/46, Čelákovice](#)



www.vilavolman.cz/firemni-udalosti

[More info: Central Bohemia Convention Bureau](#)

Huť František

Huť František in Sázava transports its visitors into the world of traditional glassmaking craft, where more than a century of history becomes a unique backdrop for corporate gatherings and more.

The glassworks' history dates back to 1882, when it was founded by Josef Kavalier as part of the region's significant glassmaking tradition and named after his father, František. It was established as a modern operation for its time and became an important centre of glass production, continuing the long tradition of glassmaking in the Sázava area. The site has retained its authentic industrial architecture and unique technical features to this day, documenting the development of the glass industry in central Bohemia. After a period of decline and disrepair, the glassworks was restored in the new millennium and gradually transformed into a cultural and social space that builds on its original legacy and opens it up to today's audience.



Today, Huť František functions as a unique event venue where historic industrial architecture naturally combines with modern use. The tall hall, together with other spaces, the original structure and the building's raw character, creates an original backdrop for conferences, gala evenings and cultural events. The site offers flexible use along with a strong, authentic story that can give every event an unmistakable atmosphere. A place where glass was once made is coming back to life today - this time as an inspiring space for gathering, creativity and new ideas.



up to 250 persons



AV equipment by arrangement



Na Kácku 218, Sázava



hutfrantisek.cz

[More info: Central Bohemia Convention Bureau](#)

Berchtold Chateau & Resort Hotel

Berchtold Chateau invites its visitors into a world of noble traditions, where history naturally intertwines with the present and gives every event a unique character.

The chateau bears the name of the prominent noble Berchtold family, whose legacy is inseparably linked to this place. The estate's history reaches deep into the past, and its present form is the result of a sensitive reconstruction that preserved the original atmosphere of a country residence while adapting it to today's needs. It is located in the picturesque Lada region, whose character is shaped by a tranquil landscape, an extensive chateau park, and proximity to sites connected with Czech history and culture. It is precisely the powerful story of this place, underscored by its authentic setting, that creates an ideal backdrop for conferences, training sessions and team-building events. The programme can include themed activities, guided tours or informal outdoor gatherings, allowing participants to experience the history of this place in a contemporary context.



The estate offers a wide range of uses - from representative historic interiors to modern, well-equipped conference halls and outdoor spaces suitable for accompanying programmes. Hotel accommodation, a restaurant and facilities for relaxation and leisure activities are also available, allowing multi-day events to be held in one place. Thanks to its good accessibility from Prague, the flexibility of its spaces and its unique atmosphere, Berchtold Chateau is an ideal choice for those seeking a venue with an authentic story that will give their event an unmistakable character and a deeper experience.



up to 100 persons



available by arrangement



Hlavní 6, Kunice



zamekberchtold.cz

[More info: Central Bohemia Convention Bureau](#)

Anna Dusakova

Svinaře Chateau

Svinaře Chateau is a perfect example of a place that doesn't pretend to be anything it isn't - and that's exactly why it works. This Baroque estate, with roots reaching back to the 14th century, is now undergoing gradual restoration and offers a unique combination of history, raw authenticity and contemporary use.

The extensive estate, with a courtyard, park and farm buildings, creates a versatile space for a wide range of events - from intimate gatherings to cultural programmes and corporate events. Both interior and outdoor spaces are available, including an acoustically interesting granary and the chateau park.



Why Svinaře?

- the authentic atmosphere of a "different kind of chateau"
- a combination of history and the present-day life of the estate
- flexible spaces for different types of events
- a peaceful setting within easy reach of Prague

Svinaře Chateau is an ideal choice for those seeking a place with character - not perfect, but real. And that is exactly what gives every event a unique frame. The estate offers accommodation for 24 guests.



hall for up to 100 persons, smaller hall for 25 persons, chateau courtyard and chateau park



standard conference facility equipment



[Zámek Svinaře, K Zámku 1, 267 28 Svinaře](#)



www.svinare.com

[More info: Central Bohemia Convention Bureau](#)

Lobeč Chateau

The Baroque Lobeč Chateau, amid the forests of the Kokořín region, is a heritage-protected building in the village of the same name, northeast of Mšeno on the edge of the Kokořínsko - Máchův kraj Protected Landscape Area in the Mělník district.

The chateau estate, with a farm courtyard and park, is located on a hill in the southern part of the village and, together with the brewery, is one of Lobeč's most striking landmarks. In addition to the chateau, several farm outbuildings, the gardener's cottage and the park are also under heritage protection. The chateau is privately owned and serves as a hotel.

The chateau underwent a demanding reconstruction and today serves as a guesthouse, as well as an ideal venue for a romantic wedding.



Among the chateau's unique features is its wine cellar from the turn of the 15th and 16th centuries, carved into sandstone - the only surviving remnant of the original fortress. Today it hosts tastings of wines from Czech and Moravian wineries.

For corporate events at Lobeč Chateau, you can make use of the peaceful countryside setting, chateau chambers, on-site accommodation, seating in the wine cellar, in a hall with a fireplace or in outdoor areas, and home-style cooking. A unique steam-powered brewery with a restaurant, just 2 minutes from the chateau, can also be visited.



70 persons



by arrangement



Lobeč 1, 277 36 Lobeč



www.zameklobec.cz

[More info: Central Bohemia Convention Bureau](#)

Ústí Region

Venues with a story



Spa House Beethoven

The oldest spa house in Central Europe, with a tradition dating back to the 12th century. It is named after the famous composer Ludwig van Beethoven, who underwent treatment here in 1811 and 1812.

The complex is set amid greenery, yet right in the centre of Teplice, between the Spa Park and the Chateau Garden.

All services - accommodation, dining, treatment and wellness - can be found here under one roof.

Café Beethoven, adjoining the building, can be used for an afternoon coffee break.



After a meeting, you can relax in the relaxation lounge or directly in the Thermalium. Full catering is a matter of course.



Blue Salon - 25 persons, Social Hall - 150 persons



AV equipment available



Mlýnská 253, 415 38 Teplice



www.lazneteplice.cz/lazenske-domy/lazensky-dum-beethoven

[More info: Ústí Region Convention Bureau](#)

Duchcov Chateau

Duchcov is one of the most interesting "storytelling" venues in the Ústí Region.

The chateau is most strongly associated with the figure of Giacomo Casanova, who lived here for the last 13 years of his life, working as a librarian. The second strong layer of the story is linked to the Wallenstein family.

Rather than simply as a grand chateau, it presents European Enlightenment and the era of the "salons".



The Wallenstein Hall can be rented for receptions, concerts and other interesting events.



136 persons



Necessary presentation and AV technology



náměstí Republiky 202/9, 419 01 Duchcov



<https://www.zamek-duchcov.cz/cs/svatby-a-pronajmy/pronajmy-majetku>

[More info: Ústí Region Convention Bureau](#)

Monopol Brewery Hall (former U labutě variety theatre)

In the Brewery Restaurant you will travel back in time to the First Republic era, when the renowned Variete zum Schwan stood here.

During the communist era, by contrast, the building housed a delicatessen that bore the same name the hotel still carries today - Monopol.

The brewery restaurant, with its Renaissance ceilings, offers various seating arrangements, layouts and gastronomy options.



The restaurant is part of a hotel complex that also offers another meeting room for 50 people, a second restaurant called Garden, 34 rooms and a sauna world with 4 saunas.



80 persons seated on the ground floor, 100 persons on the upper-floor balconies



AV equipment by arrangement



Masarykova 433/42, Teplice



www.pivovarmonopol.cz

[More info: Ústí Region Convention Bureau](#)

Knights' Hall of Střekov Castle

Střekov Castle is one of the most romantic ruins in Europe. It inspired both Richard Wagner and Johann Wolfgang von Goethe.

What kinds of events are the castle's spaces suitable for?:

- evening networking,
- concerts,
- informal VIP events,
- brand activation.

A great venue for an event with the story of the "romantic north", with a strong atmosphere of 19th-century German Romanticism.



You can rent Střekov Castle in its entirety or just part of it. Hold your event in the new Kovárna bistro, the Wágnerka restaurant, or in the main hall.



120 míst



Audiovizuální technika k dispozici



Na Zacházce 844/52, 400 03 Ústí nad Labem



<https://www.lobkowicz.cz/hrad-strekov>

[More info: Ústí Region Convention Bureau](#)

Vila Louka

A sensitively reconstructed historic villa in the České středohoří region with an artistic and design character.

This is a heritage-protected former coaching inn from the late 18th century. Renting the entire villa with its extensive grounds is ideal. The rental price includes accommodation for up to 50 people. The villa has a stylish lounge and a beautiful bar with a tap, fireplace and piano, plus a historic function hall connected to an outdoor terrace.

The building is suitable for events such as:

- management retreats
- creative workshops
- smaller corporate gatherings
- wellbeing events



An interesting feature is a swimming pond with a jetty and terrace, which serves as one of several ceremony locations on the grounds.



80 persons + accommodation for 50 persons



AV equipment by arrangement



Trnobrany 34, Liběšice, 411 45



www.vilalouka.cz

[More info: Ústí Region Convention Bureau](#)

Zlín region

Venues with a story



Archbishop's Chateau Kroměříž

The Archbishop's Chateau in Kroměříž, together with the adjoining Podzámecká Garden, offers unique facilities for corporate events in a setting listed as a UNESCO World Heritage Site.

Representative historic halls and outdoor spaces are available for hosting conferences, prestigious banquets or social gatherings. This gives companies the opportunity to organise a wide range of events, from professional conferences to informal social gatherings. Popular are the Sala terrenas on the ground floor of the chateau, which connect the interiors with the garden and are thus ideal for summer events. For large events, the Rococo Assembly Hall, with a capacity of over 300 participants, is well suited.



The event can be complemented with a tour of the chateau interiors, which are often sought after by Czech and foreign filmmakers. You can walk through the halls where, more than 40 years ago, director Miloš Forman filmed his Oscar-winning Amadeus. Thanks to its location, the chateau is a good choice for companies looking for a memorable, easily accessible venue for their guests.



200 persons (4 halls and 2 spaces in total) + 300 persons in the Assembly Hall



AV equipment - available by arrangement



Sněmovní nám. 1/2, 767 01 Kroměříž



www.zamek-kromeriz.cz

[More info: East Moravia Convention Bureau](#)

Holešov Chateau

Holešov Chateau combines the unique atmosphere of a Baroque monument with modern facilities for corporate and social events. Representative halls, historic interiors and an extensive French-style park create an exceptional venue for conferences, events and gala evenings.

The captivating story of the Rottal family residence, ceiling paintings, rich stucco decoration, the grand Great Hall, a beautiful sala terrena and the chateau chapel. Holešov Chateau is an exceptional Baroque monument, but not only that. It also offers its representative spaces to companies and their clients. For congresses, corporate gatherings, meetings, events or conferences, you can choose and rent either individual halls or the entire chateau, with a capacity of up to 800 people.



An added bonus for moments of relaxation is the freely accessible chateau park, one of the most beautiful French-style gardens in Moravia. Its characteristic trident of water features already appears in plans from the mid-18th century.



9 halls for up to 600 persons combined



projector, screen, microphones, sound system



F. X. Rychtra 190, 769 01 Holešov



www.holesov.info

[More info: East Moravia Convention Bureau](#)

Baťa Villa

Baťa Villa connects iconic functionalist architecture with representative facilities for corporate events, workshops and social gatherings. The authentic atmosphere linked to the legacy of Tomáš Baťa, historic interiors and the option of an accompanying programme create an exceptional venue for inspiring events in Zlín.

Baťa Villa offers representative facilities for workshops, lectures, presentations, receptions and corporate events, set within the functionalist architecture of Zlín associated with the figure of Tomáš Baťa. The ground-floor spaces can be used separately or combined, with a total reception capacity of up to 150 people. Available spaces include the Dominik Čipera Hall as the main space for larger gatherings, the Marie Baťová Hall with preserved historic features, and the Jan Antonín Baťa Hall, suitable for smaller meetings or workshops.



The programme can also include a tour of Tomáš Baťa's study or an expert lecture on the company's history and the legacy of Baťa's enterprise. Baťa Villa is a prestigious venue with an authentic atmosphere that gives any corporate event a unique character.



150 persons (3 halls)



AV equipment available by arrangement



Gahurova 292, 760 01 Zlín



www.nadacetomasebati.cz

[More info: East Moravia Convention Bureau](#)

Uherský Ostroh Chateau

Uherský Ostroh Chateau combines the historic atmosphere of a Renaissance monument with modern facilities for conferences, corporate gatherings and cultural events.

Uherský Ostroh Chateau offers representative spaces for workshops, conferences, presentations, social evenings and cultural programmes in the authentic setting of a historic monument. This Renaissance chateau, with its unique atmosphere, today combines the region's history with the modern requirements of organising corporate and social events. The estate also includes a newly built cultural and creative centre, created through the sensitive reconstruction of historic spaces. The chateau also features a cultural hall suitable for lectures, concerts, conferences and networking events. Quality technical facilities, flexible room layouts and the option to combine a professional programme with a cultural experience are all available.



A significant benefit is also its location in the heart of the Slovácko region, which allows the programme to be enriched with folklore, regional gastronomy, wine experiences or learning about local traditions. Uherský Ostroh Chateau thus represents an attractive and original venue for MICE events with a strong genius loci.



260 persons (across 2 halls - 160 and 100 persons)



projector, projection screen



Zámecká 24, 687 24 Uherský Ostroh



www.uhostroh.cz

[More info: East Moravia Convention Bureau](#)

Libušín a Maměnka

Libušín and Hotel Maměnka offer a unique combination of Beskydy nature, the architecture of Dušan Jurkovič, and an inspiring atmosphere for corporate gatherings. A stylish historic setting with modern facilities creates an ideal venue for team-building events and informal networking in the heart of the Beskydy Mountains.

Libušín and Hotel Maměnka are among the most striking buildings at Pustevny. Both were designed by Dušan Jurkovič, who gave them a unique signature inspired by folk architecture and Art Nouveau.

Maměnka offers stylish accommodation with a historic atmosphere, while Libušín stands out as a unique space for gatherings and gastronomy. Both places combine authenticity with modern comfort - Wi-Fi, workspace facilities and easy accessibility are all provided.



60 persons



AV equipment by arrangement



Prostřední Bečva 221, 756 56



www.novylibusin.cz

[More info: East Moravia Convention Bureau](#)

**Next month, look forward to the best incentives
connected with agritourism and rural tourism!**