

# Inspirational Czech Convention Bureau monthly

Tips on places for family days



Tips on places for family days

# Hradec Králové Region

# Bareš Ranch

**A country-style ranch by a pond with accommodation and a restaurant.**

The Bareš Ranch is a unique place for family or corporate events of all sizes. In the grounds there is the Jaroušek pond, where you can fish. The animals on the ranch include ponies and horses, deer, fallow deer and mouflon, not to mention the greatest attraction, bison. Accommodation is available all year round in log cabins. Guests can enjoy an outdoor swimming pool with sun loungers and other sports facilities.

There is an Indian tent on the site, while for small visitors the ranch offers a playground with slides, a sandpit and a trampoline. The stylish restaurant serves up fresh beef specialties from Mr. Bareš's own livestock. There are many activities to choose from on the ranch, such as fishing, horse and pony rides, archery and a petting zoo with farm animals. All in all, the ideal place to spend afternoons with the family.



Monday to Sunday



Lužec nad Cidlinou



[www.baresuvranc.cz](http://www.baresuvranc.cz)

More info: [Hradec Králové Region Convention Bureau](#)

# Kost Castle

The best preserved Gothic castle in Czech Republic.

Kost Castle, one of the best preserved Gothic castles in the country, is tucked away in the picturesque valley of the Bohemian Paradise and is an ideal place for Family Days. This majestic castle offers a wide variety of tours that explore its rich history and fine architecture. For special events, Kost Castle offers spaces for hire in the Castle Palace, the courtyard or the romantic Sala Terrena.

In addition to Kost Castle, you can also use the premises of the Karlova Koruna chateau, which is under the same management. The Karlova Koruna chateau, with its Baroque elegance and extensive gardens, offers another beautiful setting for family days and other social events. Both of these locations offer a unique combination of history, culture and natural beauty, making them ideal places for some truly unforgettable experiences.



by arrangement



Podkost - Libošovice



[www.kost-hrad.cz](http://www.kost-hrad.cz)

More info: [Hradec Králové Region Convention Bureau](#)



# Holovousy Chateau

## A unique place with a unique history

The chateau grounds are wonderfully diverse and perfect for various events, most often weddings. In addition to wedding ceremonies and conferences, Holovousy Chateau is also ideal for outdoor events such as family days, especially since it is surrounded by an 8,000 m<sup>2</sup> park. In addition to these spaces, accommodation or shared offices are also available. The chateau has everything you need to make any event unforgettable to suit the individual wishes and needs of each guest, including parking. Holovousy Chateau is a venue that combines historical charm with modern comfort, making it the perfect place for special occasions.



by arrangement



Holovousy



[www.zameckyarealholovousy.cz](http://www.zameckyarealholovousy.cz)

More info: [Hradec Králové Region Convention Bureau](#)



# Josefov Fortress

## A unique historical site of European significance

The architecture of the fortress town is remarkable for its internal layout and the consistency of its military and civilian buildings, adding a touch of authenticity to the place. The Bastion has a modern meeting room to seat 50 people, which is ideal for seminars and conferences. A Wi-Fi connection, projector and screen are available. There are special areas for families and children, such as the residential casemates, which are used for children's programmes such as the Deserter game or for smaller team-building events. There is also a fully-equipped bike room with lockers and a charger for electric bikes, which will be especially appreciated by cyclists. The fortress also has comfortable sanitary facilities. It offers a variety of themed programmes for schools that allow students to experience a day as a Soldier at Josefov Fortress or learn more about the history and significance of the fortress town. In May, it hosts a special event called "Josefov Enchantment" for families with children. Special tours are held during these days, and the underground comes alive with characters from the book Fables and Legends from the Jaroměř Region.



by arrangement



Jaroměř



[www.pevnostjosefov.cz](http://www.pevnostjosefov.cz)

More info: [Hradec Králové Region Convention Bureau](#)



# Public space

Freedom for you, your employees, their families and the wider community.

When holding large events such as family days, we're always limited by the space in which the family afternoon takes place. So let's try for once to leave the amusement parks or other such attractions behind and organise our event in a public space. You can also rent out the public space entirely for you and your guests, or brighten it up for you and the residents. This can turn a classic family day into a beautiful neighbourhood gathering.

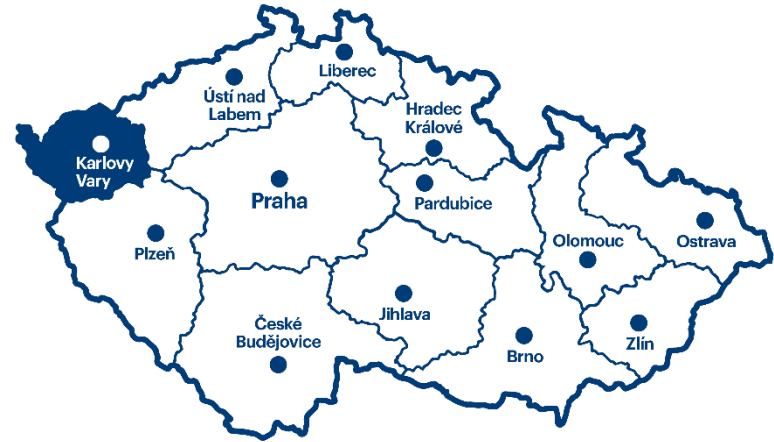


by arrangement



Hradec Králové Region

More info: [Hradec Králové Region Convention Bureau](#)



Tips on places for family days

# Karlovy Vary Region



# Bernard Farmstead - smart fun for the whole family or the entire class

The Bernard Farmstead in Královské Poříčí is located in the middle of the world-famous spa triangle, just a 10-minute drive from Karlovy Vary. It offers a mini zoo, a children's playroom with building blocks, a crafts museum, a massage studio and of course a restaurant and a guesthouse.

Visitors can see experienced craftsmen at work in their studios, or even better - try out some traditional crafts for themselves. In addition to the one-hour crash courses, there are also multi-day courses available that will give you a basic grounding in the craft. You can learn to work with wood, make a candle or visit the craft museum.

Experienced and novice builders of all ages can enjoy some clever fun in the playroom. There is also a Lego building set available. Visitors can see several domestic animals in the petting zoo at the Bernard Farmstead - sheep, goats, pigs, rabbits, chickens, geese and a guinea pig.



January - December, 9:00 a.m. - 5:00 p.m.



Královské poříčí



[www.statek-bernard.cz](http://www.statek-bernard.cz)

More info: [Carlsbad Convention Bureau](#)



# SOOS National Nature Reserve

The Soos National Nature Reservation is located near Františkovy Lázně. This is a large peat bog and fen, with a great number of mineral springs and pure carbon dioxide bubbling up in so-called mofettas. There is a nature trail leading along the bottom of a dried-up lake, which used to contain salt (mineral) water

The complex includes a natural geological park, a museum with a “Nature of the Cheb and Soos regions” exhibition, a pavilion with a “History of the Earth” and palaeontology exhibition with large reproductions of pictures by Zdeněk Burian and life-size models of prehistoric lizards, a wild animal rescue station and “Bird world” display.



 March - May Mon - Sun 9:00 a.m. - 5:00 p.m.; June - September Mon - Sun 9:00 a.m. - 6 p.m.; October - November Mon - Sun 9:00 a.m. - 5:00 p.m.; December Fri - Sun 9:00 a.m. - 4:00 p.m.

 Skalná u Františkových Lázní

 [www.muzeum-frantiskovylazne.cz](http://www.muzeum-frantiskovylazne.cz)

More info: [Carlsbad Convention Bureau](#)

# Resort Stein

The Hotel Resort Stein is located in the village of Skalka, near Cheb and Františkovy Lázně, by the picturesque artificial lake Skalka.

Horse or pony riding lessons are available in the riding hall. The Stein Resort has an eco-farm with over 100 different farm and domestic animals. Enjoy the chance to take a walk with a llama, donkey or pony. Stylish accommodation is available in twin, three- and four-bedded rooms with ensuite bathroom. Parties or training sessions can also be held there. The wellness hotel offers a beer spa, relaxing baths, a sauna, hot tub, quad bike rides and a mini zoo.



all year



Skalná near Františkovy Lázně



[www.resortstein.cz](http://www.resortstein.cz)

More info: [Carlsbad Convention Bureau](#)

# KV Arena and Rescue Service World

**RESCUE SERVICE WORLD - a health and safety centre for the whole family.**

The site consists of several special-purpose buildings, including an improvised hospital, police station and fire station equipped with technology to accurately simulate dangerous situations, including interactive simulators and trainers. The complex also includes a modern traffic playground with a level crossing and other outdoor locations for simulating risks outdoors.

The site is linked to the KV Arena - a pool, sports, cultural and congress centre in Karlovy Vary.



Mon - Sat



Karlovy Vary



[www.svezachranaru.cz](http://www.svezachranaru.cz), [www.kvarena.cz](http://www.kvarena.cz)

More info: [Carlsbad Convention Bureau](#)



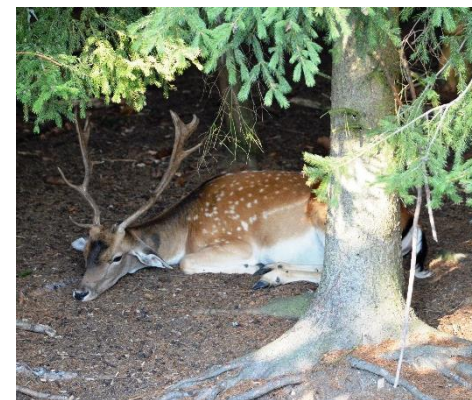
# Svatý Linhart

The Svatý Linhart Spa is an information and visitor centre with exhibition spaces and is run by the Karlovy Vary Spa Forests.

It includes a large game reserve that is adapted to allow visitors to watch the animals. There are two observation footbridges running across the game reserve that the animals can walk under, enabling them to be watched in the locations they frequent most often.

The Svatý Linhart natural rope centre has rope obstacle courses for children and adults, from low ropes to top ropes. The activities in the rope park are supervised by trained instructors.

The site is connected to a dendrological circuit, a trail of animal silhouettes, a café and a social area.

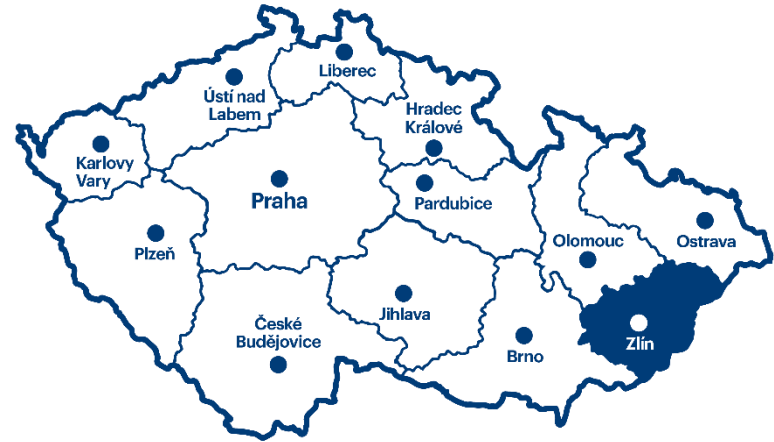


 according to the opening hours on the website

 Karlovy Vary - Doubí

 [www.llpkv.cz](http://www.llpkv.cz)

More info: [Carlsbad Convention Bureau](#)



Tips on places for family days

# Zlín Region

# Skleníky Leisure Resort

Get to know the unique Baťa Canal up close on a stay at the Skleníky Leisure Resort. It is located behind the weir in Spytihněv and offers a ton of fun.

You can play table tennis, adventure mini golf, beach volleyball and bowling. And when it gets hot, it's time to jump in the pool. Explore the Baťa Canal on the Morava cruise ship, boarding at the Spytihnev dock, or arrange an individual cruise.

If the weather's poor, don't despair. The multi-purpose hall provides ample space for evening programmes and lots more.



Mon - Thu 2:00 - 8:00 p.m., Fri 2:00 - 11:00 p.m., Sat 12:00 - 11:00 p.m., Sun 10:00 a.m. - 8:00 p.m.



Spytihněv 607, 763 64 Spytihněv



[www.rs-skleniky.cz](http://www.rs-skleniky.cz)

More info: [East Moravia Convention Bureau](#)

# Zerlina goat farm

A family farm on a traditional Wallachian farmstead.

Help out with the running of the farm for a morning, or make your afternoon an experience you'll remember for a long time. You can choose from a large number of activities on the farm (feeding, mucking out, sweeping, carrying hay, herding, studding ponies, etc.)

The activities can be adapted to the wishes and physical abilities of families with children. We offer experiential teambuilding activities for larger groups of company employees. Herding, splitting wood, cheese making, processing sheep's wool, all rounded off with a chance to taste the products.



by arrangement



Hážovice 2070, 756 61 Rožnov pod Radhoštěm



[www.zerlina.cz](http://www.zerlina.cz)

More info: [East Moravia Convention Bureau](#)



# Gibon Park

Active leisure with plenty of fun and adrenaline in the pleasant setting of the forest park in Rožnov pod Radhoštěm, right in the heart of the Beskid Mountains.

Special emphasis is given to children, but there's lots to do for adults too, making it an ideal spot for family days. Gibon Park offers an adrenaline-packed experience for anyone who wants to test their physical fitness and skill, their courage and mental resilience. The main attraction is the ropeway, which has its own children's version called Giboňáček. There's also a trampoline field, tubing, a children's park, aquazorbing, bumper ball, a bull trainer, archery, mini golf and zorbing.



open 1 April - 15 June and 1 September - 31 October on weekends and holidays (+ in the week by appointment), 16 June - 31 August open daily in good weather, 1 November - 31 March Closed



Pod stráni 693, 756 61 Rožnov pod Radhoštěm 1



[www.gibon-park.cz](http://www.gibon-park.cz)

More info: [East Moravia Convention Bureau](#)

# Kroměříž Children's World

A unique amusement park offering fun for the whole family, whatever the weather.

With a wide range of attractions for children of all ages, from toddlers to teenagers, and a stylish bistro, fun is guaranteed for the whole family. You can enjoy the rope world, trampoline centre, climbing wall, inflatable attractions, game simulators, the skate park and chachabox, which is a five-storey netted labyrinth made up of four slides, tunnels and lots of other obstacles for all ages. There's also a play area for the youngest children and a number of sports facilities, including beach volleyball, beach football, tennis courts and streetball.



Wed – Sun 10:00 a.m. to 6:00 p.m.



Velehradská 4080/111, 767 01 Kroměříž



[www.detskysvetkromeriz.cz](http://www.detskysvetkromeriz.cz)

More info: [East Moravia Convention Bureau](#)

# Zlín Zoo

The most visited tourist destination in Moravia and the second most popular zoo in Czech Republic is an ideal place for a family day out.

Take the kids to this iconic zoo for an amazing family day out. You can walk through the bird aviary, pet a stingray, feed flamingos or see a real tropical jungle. Zlín Zoo is the 3rd most visited tourist destination in Czechia, and also includes the beautiful Lešná Chateau, which is packed with travel artifacts.



April - September 8:30 a.m. - 6:00 p.m., March and October 8:30 a.m. - 5:00 p.m., January - February and November - December 8:30 a.m. - 4:00 p.m

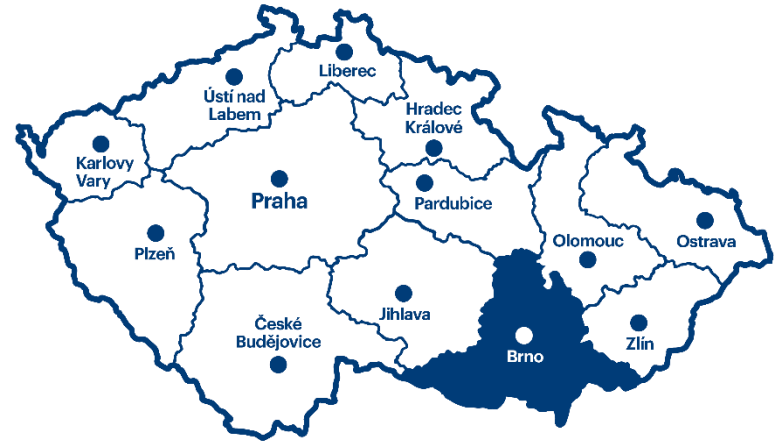


Lukovská 112, 763 14 Zlín 12



[www.zoozlin.eu](http://www.zoozlin.eu)

More info: [East Moravia Convention Bureau](#)



Tips on places for family days

# South Moravia

# Excalibur City

A wealth of options just ten minutes from Znojmo

Everything you can think of at your fingertips! And perhaps even some things that might not come to mind, as besides the hotel and restaurants, Excalibur City has a surprisingly diverse range of shops in the adjacent shopping mall, a casino, a campsite full of mobile homes, a giant children's world packed with fun attractions, a rope course, go-karts, a technology museum and a Lego museum!

The Jukebox Hotel continues the theme of the American diner-style restaurant. You guessed right, as there's a machine packed with hits in every room.

The location of the complex is another great advantage. Just a hop, skip and a jump away from the Austrian border on the way to Vienna and surrounded by Znojmo's vineyards.

Excalibur City in Hatě will be the perfect corporate event for the whole family. Children are sure to have a blast in Merlin's fun world, while adults will have plenty of chances to enjoy some time with colleagues.



 all year round

 Chvalovice-Hatě 183, 669 02 Znojmo 2

 [www.excaliburcity.com](http://www.excaliburcity.com)

More info: [Brno Convention Bureau](#)

# OREA Panorama Resort Moravian Karst

## Comfortable accommodation in the land of a thousand caves

The Hotel Panorama Wellness is located on the outskirts of Blansko, not far from the heart of the Moravian Karst.

Its surroundings, facilities and wide range of services make it the ideal place for team-building or other corporate events. You can choose from several conference halls and smaller lounges and there are several team-building activities available at the hotel itself. Have you ever tried pit pat? It's a combination of mini-golf and snooker and there's a fully-equipped course waiting for you in the hotel grounds.

There's also a volleyball court, large grassy areas suitable for various sports, and indoor and outdoor salt-water swimming pools. The hotel staff can prepare entertaining company quizzes or a wine or rum tasting for you. They can also organise an adrenalin-fuelled journey into the depths of the Moravian Karst for adventure-lovers.

Did we mention wellness? At the end of the day you can ease your tired body in the sauna world or enjoy a massage or beauty treatment.

The Hotel Panorama Wellness has everything you need for an imaginative corporate event in a family setting.



 all year round

 Češkovice 168, 678 01 Blansko 1

 [www.orea.cz](http://www.orea.cz)

More info: [Brno Convention Bureau](#)

# Permonium

## A mine full of experiences

Are you looking for an unforgettable place for team building or an entertaining day for your partners or employees? The world of mine sprites is not just a fairy-tale for children!

The Permonium® near Oslavany is a place where your colleagues will feel like real heroes and your clients like true experts! You can expect to take part in various activities in the complex of the former black-coal mine. From learning, through sports activities and adrenaline, to rest and relaxation. If you are very tired, you can even stay here for the night! Refreshments and catering are also available, including historic specialities. There are comfortable facilities with modern audio-visual equipment for the organisers.

Enjoy an active day using modern technologies. You will feel like heroes in a computer game. You'll stretch your muscles, work your brain cells and strengthen your team while you're at it.



May to October



Padochovská 31, 664 12 Oslavany



[www.permonium.cz](http://www.permonium.cz)

More info: [Brno Convention Bureau](#)

# Hotel Atlantis

## A lost paradise above the Brno reservoir

The Atlantis Hotel is only 15 minutes from the centre of Brno, in a lovely location above the Brno reservoir. The new congress centre offers a range of spaces, from the large hall with plenty of daylight to the covered outdoor Grill Park. Imagine those informal meetings and gatherings out in the fresh air with all the services you need, and delicacies served from an open fire...

The hotel complex also offers an outdoor pool, tennis courts and a basketball court - the ideal conditions for active team-building for the whole family!

The new wellness centre with a range of saunas, a swimming pool, hot tub and a picturesque outdoor pond with fireplace in the middle, is the perfect place to rest and relax at the end of the day.

And best of all.... the entire wellness facility, which has a capacity of up to 150 guests, can be hired for corporate events!



all year round



Brána 177, 664 34 Rozdrojovice-Kuřim



[www.hotel-atlantis.cz](http://www.hotel-atlantis.cz)

More info: [Brno Convention Bureau](#)





# Bruno Family Park

## A children's paradise in Brno

Where can they take care of up to 300 children? At the Bruno Family Park! This is where your family day as a form of relaxation and team-spirit event for employees will shine. You can choose from several options; they'll prepare an animation programme for the children or give them the freedom to enjoy all the attractions that this family fun park offers. Excellent refreshments are of course also provided.



all year round



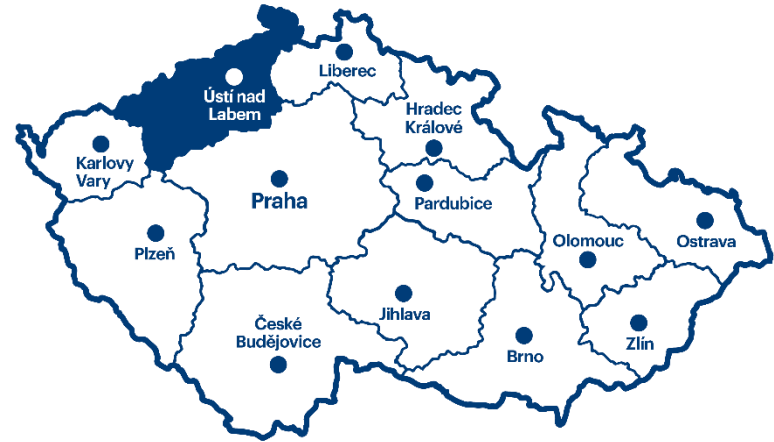
Kigginsova 2, 627 00 Brno – Slatina



[www.brunofamilypark.cz](http://www.brunofamilypark.cz)

More info: [Brno Convention Bureau](#)





Tips on places for family days

# Ústí nad Labem Region

# Excavator Park and Polygon MOST

The large multi-purpose Autodrome and Polygon in Most is an ideal place for Family Days. It offers a great location, capacity and range of services.

Programmes can be combined, meaning you can use either the whole complex or just certain locations.

For children and adults there is a separate fun section - the Excavator Park, the only one of its kind in Czech Republic, where you can try your hand at driving a real construction machine. Children will also have fun on the special traffic playground.

During the accompanying programme, you can have a ride in a sports Fabia, take taxi rides in racing specials, segways, quad bikes, go-karts, an F1 simulator, a rollover simulator or a crash simulator. The ladies can enjoy the services of make-up artists and masseurs.

The venue can accommodate up to 700 people and the schedule and activities for the day can be adapted to the number of participants.



all year round



Most



[www.autodrom-most.cz](http://www.autodrom-most.cz)

More info: [Ústí Region Convention Bureau](#)



# MOST Hippodrome - 170 ha of perfect entertainment

As a recreation and health complex, the reclaimed park at Velebudická výsypka offers up to 170 hectares of space for various types of social events for employees and families.

The complex's main attraction is the racecourse and horse racing. The Hippodrome attracts around one hundred thousand visitors a year. The whole complex can be used to hold social and corporate events, including sports activities.

There is a two-way in-line track approximately four kilometres long, as well as a footgolf course! A game that combines three of the world's top sports - football, golf and mini-golf. Footgolf is for people of all ages and abilities, for men and women, for young and old.

The area has outdoor barbecue areas, a horse bar for preparing quick and delicious refreshments and a dance floor.



all year round, outdoor activities April - September



Most



[www.hipodrom.cz](http://www.hipodrom.cz)

More info: [Ústí Region Convention Bureau](#)

# Zoo Park and Kamencové jezero lake in Chomutov

In addition to a separate zoo, this vast natural area covering 112 hectares offers a Eurosafari with off-road rides on the Safari Express and the Stará Ves open-air museum.

You can spend the whole day at the site, enjoy some extra fun with guided tours, watching the animals being fed, and taking a ride on the Amálka bicycle train or the Safari Express.

The Stará Ves open-air museum offers a unique insight into the life of our ancestors, while the Tajga restaurant offers refreshment facilities to seat up to 70 people indoors and 60 outdoors.

Within walking distance of the zoo park lies the Kamencové jezero - a unique natural lake, which offers a variety of leisure opportunities as well as a natural swimming pool with landscaped beaches. You can play adventure golf, beach volleyball, streetball, table tennis, badminton, rent pedal boats, boats or paddleboards or try your hand at water skiing.



April - October



Chomutov



[www.zoopark.cz](http://www.zoopark.cz)

More info: [Ústí Region Convention Bureau](#)



# Lesná

The Lesná Mountain Hotel is located on the peaks of the Ore Mountains near Chomutov, so you won't disturb anyone! The extensive complex amidst the forests of the Ore Mountains offers plenty to do for families with children, with a place to enjoy sports or simply sit and relax.

The complex includes a multi-purpose sports field with evening lighting for ball games at any time of day, an animal mini-farm, a rural regional museum, which is an experience in itself and is freely accessible. In one of the cottages you can all bake homemade bread together.

Adults will appreciate the barbecue facilities, while children are sure to love the playground and the natural arboretum with lots of interactive attractions. There's also a giant party tent from spring to autumn to host all kinds of activities. The resort can accommodate up to 70 people.



all year round



Lesná - Nová ves v Horách



[www.horskyareal-lesna.cz](http://www.horskyareal-lesna.cz)

More info: [Ústí Region Convention Bureau](#)

# Ústí nad Labem Summer Cinema

The Summer Cinema is the largest cultural facility in the city of Ústí nad Labem. Built in the city centre after the Second World War, it is a multi-purpose space that can seat up to 6,000 people.

The venue is ideal for variety events, entertainment shows, family festivals and concerts. The auditorium is surrounded by greenery and trees, and although you're in the city centre, you're nicely isolated from the hustle and bustle.

Due to the size of the site, a number of stalls, attractions and refreshments can be added. A motocross track or downhill mountain biking jumps can be set up on request.



all year round

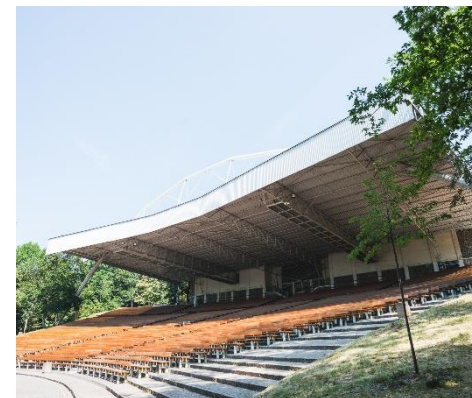


Ústí nad Labem



[www.ksul.cz](http://www.ksul.cz)

More info: [Ústí Region Convention Bureau](#)





Tips on places for family days

# Central Bohemian Region



# Dvůr Všerad - Miniature golf and the M. D. Rettigová Museum and Gallery

It's hard to find a more beautiful place for the family to relax than Dvůr Všerad in Všeradice. There is a miniature golf course, museum, brewery, a pub and much more.

The former chateau was renovated and reopened in 2010 with the vision of creating a sports and recreation complex. The miniature golf course is fun for all age groups. It has 18 holes and is certified as a championship course. Active athletes can also use the multi-purpose sports ground within the complex. The stylish inn with its brewery offers authentic Czech cuisine and is inspired by the famous 19th-century cook Magdalena Dobromila Rettigová, who was born here.

A museum bearing her name was opened in Všerad in her honour. It houses four exhibitions. The first interactive exhibition is dedicated to Rettigová's life and work. The second focuses on the phenomenon of the Czech village and the history of agriculture. The third and fourth exhibitions present contemporary artists, photographers and sculptors from Czechia and all over the world. The top floor of the gallery houses a fully equipped concert and theatre hall. It can seat 150 people, making it perfect for corporate and social events.



Museum: April - June, September: Fri - Sun: 10:00 a.m. - 7:00 p.m., July - August: Mon - Thur: 11:00 a.m. - 5:00 p.m.,  
Fri - Sun: 11:00 a.m. - 7:00 p.m.

Miniature golf: April - June, September - October: Fri - Sun: 11:00 a.m. - 7:00 p.m., July - August: Mon - Thur: 11:00 a.m. -  
5:00 p.m., Fri - Sun: 11:00 a.m. - 7:00 p.m.



Všeradice 1, 267 26 Všeradice



[www.vserad.cz](http://www.vserad.cz)

More info: [Central Bohemia Convention Bureau](#)

# Karlštejn Recreational Park

The Karlštejn Recreational Park and Safari brings visitors almost within reach of wild animals. It also includes a Fun Park zone with attractions for children and a relaxation zone with access to the Berounka River.

Visitors can admire a number of exotic animals at the family zoo, led by the majestic white lion Leon. The large enclosure is home to camels, bison, llamas, zebras, French donkeys, Shetland ponies, ostriches and red kangaroos. Other felines such as spotted and black leopards, a few white tigers, red-footed boobies and rhinos are also on display. In addition to the tour, there are also pony or camel rides available. You can refresh yourself in the Kiosk U Bílého lva, which has a Wi-Fi connection.

Don't miss a visit to the relaxation zone with access to the Berounka River and the option to hire paddleboards with all the necessary gear, including inflatable kayaks. Children will have fun in the fun park, which has plenty of attractions and a new playground. Dogs are allowed on a leash.



April - June, September: Wed - Sun: 10:00 a.m. - 6:00 p.m., July - August: Mon - Sun: 10:00 a.m. - 6:00 p.m.



Karlštejn 329, 267 18 Karlštejn



[www.rekrecnypark-karlstejn.cz](http://www.rekrecnypark-karlstejn.cz)

More info: [Central Bohemia Convention Bureau](#)

# TEPfactor

TEPfactor is amazing fun for anyone who craves an adventurous experience. Whether you're looking for something to do at the weekend or planning fun with the family, this is the place for you. You don't have to worry about the weather - it's fine under the TEPfactor roof all year round. Test your skills, strength, logical thinking and patience - it won't be easy, but you'll overcome every challenge with the right team.

TEPfactor Boyard is a game inspired by the Fort Boyard show! You can expect 25 challenging tasks in the depths of a pirate cave, which you complete in teams of 2 to 5 people. You will be awarded one of 20 clues for each completed task, which will help you open four bonus rooms. You can complete the tasks in any order and you have unlimited attempts to do so. If you persevere, you will succeed in every task! Only real players, who complete all the tasks, can expect a reward. Only they will open the chest with the pirate gold!

If you're a fan of codes and watersports, try the marina, where you can play a small and large Cipher Game on the water or take a ride on a speedboat.

The whole programme can be rounded with a stay in our indoor bungalows, outdoor log cabins or VIP room.



TEPfactor Boyard all year round, water contests in good weather. Every day



Chotilsko 1, 262 03 Chotilsko



[www.tepfactor.cz](http://www.tepfactor.cz)

More info: [Central Bohemia Convention Bureau](#)



# Mirakulum Park

A land packed with games, fun, trees, animals and children's imagination can be found in Milovice nad Labem. This unique 10-hectare amusement and educational park was inspired by the best of the world's parks and children's most secret wishes.

The site includes the Mirakulum Castle with lots of climbing frames, underground passages, observation towers and platforms. There's also a water world, which offers an educational water game as well as being the perfect place to freshen up. The forest city includes towers, rope paths in the treetops, underground passages, and a ride on a rubber ring. You'll also find the Rolly Toys autodrome with bumper cars and pedal cars, large trampolines, tall observation towers, a forest trail with animals, mazes, educational gardens, a mini-zoo and much more! In addition to the permanent attractions, various events can also be held for groups, companies and their employees with their families during the year.

There are several areas available for your clients or employees. All of them are part of or immediately adjacent to the park. The 2-hectare large meadow is one of the largest in Central Bohemia, with all the facilities for large events.

One great advantage is that you can combine your event in Mirakulum with a 2-km narrow-gauge railway ride to the neighbouring Milovice Tank Arena. There, you can enjoy a wide range of outdoor military & adrenaline activities, including rides on a BVP, quad bikes or air soft and paintball shooting ranges.



April: Sat - Sun, public holidays, May - September: Mon - Sun, October: Tues - Sun, public holidays, November: 1 - 3 November



Topolová 629, 289 24 Milovice



[www.mirakulum.cz](http://www.mirakulum.cz)

More info: [Central Bohemia Convention Bureau](#)



# Majaland Family Day

If you're looking for entertainment for your employees as well as their children, Majaland is a great choice. It's the only place where you can visit the fairytale world of the popular Maya the Bee. Majaland can be privately rented for the whole day and you can hold a unique corporate event for your employees and their families, for up to 2,000 people in total. It'll be a real blast!

Majaland Prague is the largest indoor amusement park in Czechia, covering an area of 9,000 m<sup>2</sup>. It offers more than 10 fantastic attractions, including an impressive 220-metre roller coaster with an elevation of 9 metres, an adrenaline-fuelled free fall or a tilting chain carousel.

Children can take a ride on a butterfly carousel with a 16-metre flight path, hurtle down a 30-metre slide with an elevation of nine metres, and zip through Viking Vik's territory at breakneck speed on an indoor roller coaster. Most of the themed attractions are also open to adults, so fun for the whole family is guaranteed.

The park has recently been expanded to include an outdoor area, which is not available in bad weather.



10:00 a.m. – 8:00 p.m.



POP Airport Prague, Ke Kopanině 421, 252 67 Tuchoměřice



[www.pop.cz/majaland](http://www.pop.cz/majaland)

More info: [Central Bohemia Convention Bureau](#)

# Moníneć Activity Park – family fun all year round

Take your employees and their families to the Moníneć Activity Park skiing in winter or for fun in summer. Moníneć offers tons of excitement and fun for the whole family.

It has the biggest and most modern ski complex in Central Bohemia. The Czech Siberia micro-climate, a north-facing slope and the altitude make Moníneć a unique natural glacier. Thanks to the most modern snow-making equipment, you can ski here when people are taking their bikes out elsewhere. When the skin run is not covered in snow, it operates as a biking track. There are several mountain bike tracks right on the slopes, even for less competitive riders.

And on warm days, the whole family can have fun at the Moníneć Activity Park. There are several attractions high up in the trees in the rope park. Or would you prefer the maxi water slide or paddleboarding, a ride on a raft or electric boats on Pilský Pond? The hills around and long trails in the area can be easily managed with an electric bike or mountain scooter, which are available for hire there. Just take the cable car to the top of the hill and choose your route. You can also have fun on the tennis and volleyball court right below the Hotel Moníneć.



all year round



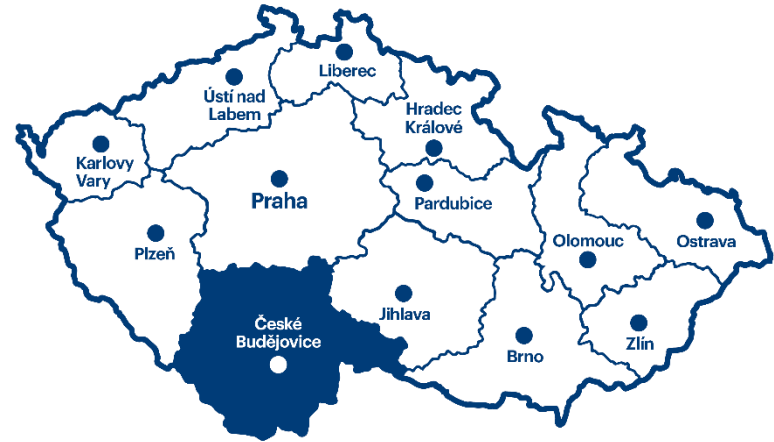
Moníneć Activity Park - Moníneć 7, 257 91 Sedlec-Prčice



[www.moninec.cz](http://www.moninec.cz)

More info: [Central Bohemia Convention Bureau](#)





Tips on places for family days

# South Bohemia

# Sport and leisure complex below Hluboká nad Vltavou Chateau

Enjoy a unique fun-packed day in one of the most comprehensive sports and leisure complexes in the Czech Republic. Enjoy family leisure and fun on adrenaline attractions or some active relaxation on the sports grounds. If you don't know where to go with your family, friends or colleagues on a trip, the Sport and Leisure Complex in Hluboká nad Vltavou is the right choice.

## Some of the individual attractions that the resort offers:

- Rope park and children's rope course
- Adventure miniature golf
- Špuntárium (playground for children)
- Beach volleyball
- Inflatable trampoline
- Bike and scooter hire
- Various water sports - boats, paddleboarding
- Aloha cocktail bar
- Bedouin tent for conferences



10:00 a.m. - 6:00 p.m. (depending on the season - more info on the website)



Hluboká nad Vltavou



[www.ares-hluboka.cz](http://www.ares-hluboka.cz)

More info: [South Bohemia Convention Bureau](#)





# Active relaxation below Libín in Šumava

Everyone will enjoy themselves in Prachatice, the town below Libín. Explore life in the forest and get past every obstacle in the Forest Games Arena. The three parts of the complex have something for everyone. An anthill, a spider's web, a bird's nest and other game elements with a forest theme.

Can you get through the second stage without stepping on the ground? In the third part, you can relax in giant nets with a view of the treetops and the sky. From the Forest Games Arena you can climb up to the lookout tower on Libín. There are plenty of other trails around here, so just take your pick and enjoy the views of the countryside. The perfect end to the day is in the swimming pool with its hot tub, the children's pool or the sauna world, where you can enjoy a panoramic sauna with a view of Libín.

The Šumava region has plenty to offer for all ages. The choice is yours!



unlimited outdoor activities, for opening hours of the pool and sauna world, see [bazenprachatice.cz](http://bazenprachatice.cz)



Prachatice



[www.visit.prachatice.eu](http://www.visit.prachatice.eu)

More info: [South Bohemia Convention Bureau](#)

# Zeměráj Adventure Park

A unique historical village with a range of activities for all ages. Besides all the attractions, you can enjoy quality catering with seating inside and outside the Pod hrázi Inn.

More than a hundred games, puzzles and adventurous tasks spread throughout the site, aimed at refreshing those brain cells, training skill, dexterity, perception, balance, encouraging creativity and the ability to change ingrained stereotypes. You can run, climb, invent, create and discover things all day long. After a fun-packed day, you'll also find that you've learnt a lot about the life of our ancestors and the surrounding countryside.



opening hours end of April - end of September; July and August every day, otherwise on weekends and public holidays



Kovářov near Milevsko on the border of South and Central Bohemia



[www.zemeraj.cz](http://www.zemeraj.cz)

More info: [South Bohemia Convention Bureau](#)

# A fun-packed day and the Kingdom of the Forest at Lipno

The Kingdom of the Forest, a treetop trail, scooters, bikes and skates or swimming in the lake. Where else can you find so many activities as at Lipno nad Vltavou, a paradise for families with children?

During the day you can enjoy the climbing frame or the rope park in the Kingdom of the Forest, enjoy the beautiful views on the Treetop Trail, rent a family boat or go for a scooter ride, biking or skating along the Lipno River.

In the evening, enjoy a sweet treat at the famous Povidloň confectioner's. The water and shore of Lake Lipno offer countless opportunities for families with children.

The animation team will prepare fun activities for you all year round, in summer on the lake shores and in winter on the resort's ski slopes.



in good weather all year



Lipno nad Vltavou



[www.lipno.info](http://www.lipno.info)

More info: [South Bohemia Convention Bureau](#)




# Summer and winter with wellness on the shores of Lake Lipno

Frymburk on the shores of Lake Lipno offers the spa summer when it's warm and tons of attractions for families with children in winter.

This gem on the shore of the Lipno reservoir is home to the largest wellness hotel in Šumava. If you're looking for an escape from the hustle and bustle of everyday life, you've come to the right place. The staff here specialise in perfect relaxation and making guests feel like royalty. There's a water park, wellness and a fascinating exhibition - the world under the surface



 all year round

 Frymburk

 [www.hotelfrymburk.cz](http://www.hotelfrymburk.cz)

More info: [South Bohemia Convention Bureau](#)

# Sport Hotel in Hluboká nad Vltavou

The Sport Hotel Barborka in Hluboká nad Vltavou offers everything you need, whether you want to relax in the wellness centre, barbecue and roast sausages or enjoy some active relaxation in the rope park. There's also a gym and escape games.

In addition to great activities for families, the Sport Hotel Barborka offers accommodation in a renovated hotel building or in five-bed chalets. If you're looking for a place to pitch your tent or park your caravan, enjoy camping in the beautiful countryside of South Bohemia.



all year round by arrangement



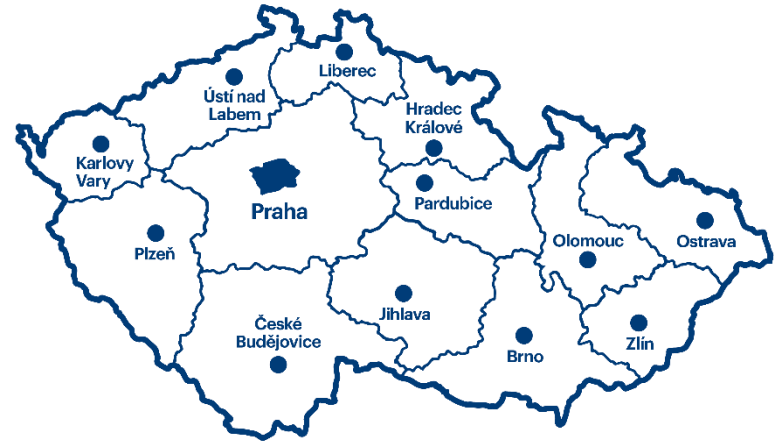
Hluboká nad Vltavou



[www.sporthotelbarborka.cz](http://www.sporthotelbarborka.cz)

More info: [South Bohemia Convention Bureau](#)





Tips on places for family days

# Prague

# Aquapalace Prague

From adventure slides and wave pools to relaxing spas and saunas, Aquapalace Prague offers the perfect combination of fun and relaxation for all the family. Professional staff are on hand to look after all visitors, allowing you to fully concentrate on enjoying your time together in family groups.

Aquapalace Prague is Czechia's largest complex offering a water and sauna world, fitness centre, wellness/spa, physiotherapy and a hotel. The aqua park is located on the southern outskirts of Prague and is very easy to get to from the city centre. Visitors can enjoy an endless range of attractions here - from a multitude of larger and smaller slides, slow and wild rivers, waves and underwater virtual reality to calm pools. Guests can relax in one of the many saunas and hot tubs, or in the spa and wellness centre. Aquapalace Prague offers a wide range of dining options in up to ten restaurants, bars and cafés!

Comfortable accommodation for families is available in 231 rooms at the Aquapalace Hotel Prague, which is part of the resort. Family days can be spiced up by a miniature golf tournament on the 18-hole course right in front of the hotel, with the option to enjoy a barbecue. With full service and a wide range of activities and catering, Aquapalace Prague is the perfect place for unforgettable family days.



daily 10:00 a.m. - 10 p.m.



Aquapalace Prague, Pražská 138, Praha - východ



[www.aquapalace.cz](http://www.aquapalace.cz)

More info: [Prague Convention Bureau](#)



↑↓ Aquapalace Prague

# Kunsthalle Praha

Kunsthalle Prague is an interesting and inspiring setting for group family days. In one place in Malá Strana, visitors will find a combination of art, entertainment, education, gastronomy and opportunities for group collaboration. Everyone is sure to find creative fun and enjoyment here, whatever their age.

Kunsthalle Prague is a modern art centre located in the listed building of a former substation. It houses three large gallery spaces, a design shop, a bistro and a café with a terrace and a view of Petřín and Prague Castle. Kunsthalle Prague regularly holds various family events and festivals, which can also be organised as a complete programme to order for a family day. Special tours of the exhibitions for families are adapted to suit the needs and interests of children. Interactive workshops allow children and adults to enjoy getting creative: painting, modelling, drawing or making artworks from different materials. The nine-metre-high "Art Wall" in Gallery 2 offers the unique experience of creating your own light graffiti, and the "Kidshalle" - a playful space for exploring different artworks and processes - is open to all generations.

Besides a complete programme for family days, Kunsthalle Praha can also provide catering in the industrial bistro with a children's play area or café with a view of Malá Strana and Prague Castle. It offers organisers everything they need for a perfect fun and inspiring experience centred around art and culture for families and children.



daily except Tuesday 11:00 a.m. - 7:00 p.m. (available for all-day rentals on Tuesdays)



Kunsthalle Praha, Klárov 5, Praha 1



[www.kunsthallepraha.org](http://www.kunsthallepraha.org)

More info: [Prague Convention Bureau](#)

↑↓ Kunsthalle Praha





# Prague Exhibition Grounds

A surprisingly extensive and flexible range of activities and programmes for family days is on offer at the Exhibition Grounds in Prague's Holešovice. The Exhibition Grounds have extensive outdoor and indoor spaces, in the immediate vicinity of the city's largest park - Královská obora or Stromovka.

Covering 36 hectares, the Exhibition Grounds can host family days for even the largest groups of visitors with an almost infinite number of activities: from sports, fun competitions and creative workshops to musical performances and theatre shows and much more.

The Exhibition Grounds are easily accessible from all parts of the city and the surrounding area, making it easy for families with children to attend.

For fans of outdoor activities, there is a rope and parkour playground, a cycling park, a climbing wall and a skate plaza. Families with smaller children will appreciate the giant sandpit or the playground castle. Outdoor catering can be arranged in the barbecue area, on the picnic meadow, in the two bistros and two cafés. Those interested in holding family days indoors can choose from four Křížík pavilions with state-of-the-art technologies and the historical Bohemia pavilion. The programme can also be spiced up with a visit to the Marold Panorama of the Battle of Lipany or the Sea World in the complex.



daily 7:00 a.m. - 9:30 p.m.



Výstaviště Praha, a.s., Areál Výstaviště 67, Prague 7



[www.navystavisti.cz](http://www.navystavisti.cz)

More info: [Prague Convention Bureau](#)

↑↓ Prague Exhibition Grounds



# Prague Zoo

Prague Zoo in the wooded and rugged Troja district is regularly ranked as one of the world's most popular zoos. Prague Zoo also offers a wide range of tailor-made accompanying programmes. Family days at Prague Zoo will be an unforgettable experience for enthusiastic children and happy adults alike!

A great choice for group events, not only educational ones, is the Education Centre near the main entrance to the Zoo, which has the advantage of opening onto a covered outdoor terrace. The Amphitheatre in the Children's Zoo in the lower part of the garden is ideal for larger events with a more extensive programme. The picnic area is also a popular choice for group and family events. However, another area in the complex, covering up to 60 hectares, is also available by arrangement.

The wide range of children's and family programmes includes guided day or evening tours, a creative workshop on making paper from elephant dung, meeting animals from special contact breeding, a family zoo and much more. Another interesting attraction for families is the ropeway, and children will appreciate the Bororo Reservation - an outdoor play complex consisting of lots of small houses connected by ladders, steps and ropes. Visitors can enjoy a wide range of catering services in the Zoo's 4 restaurants and 9 seasonal stands.



daily from 9:00 a.m. to: November - February 4:00 p.m., March - April 5:00 p.m., May - August 7:00 p.m., September - October 6:00 p.m.



Prague City Zoo, U Trojského zámku 120/3, Prague 7

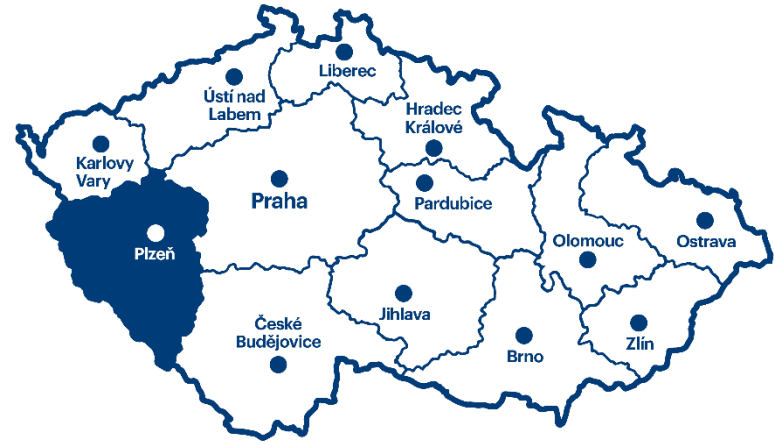


[www.zoopraha.cz](http://www.zoopraha.cz)

More info: [Prague Convention Bureau](#)



↑↓ Prague Zoo



Tips on places for family days

# Pilsen Region

# Fun in Šumava - Off Park Sušice

Adventure, active fun or just a trip in Sušice and the surrounding area - the most beautiful nature park for children and adults.

An extraordinary experience packed with daring fun and the chance to push your own limits in rope parks for everyone, regardless of age. The calm river with no weirs or pitfalls guarantees a hugely enjoyable experience on a sightseeing rafting trip on the Otava with a breathtaking view of the largest castle ruins in the country, Rabí Castle, as well as the chance to swim on the river beaches and eat and drink in the boating pubs. In-line skating in Šumava means a ride on a brand new asphalt surface, set against the backdrop of the gold-bearing Otava River and its weirs and magical meanders.

Strategy, tactics, adrenalin and most of all great fun. That's paintball, an action-adventure game that's not just about luck and physical ability, but mostly calls for teamwork. A 5-kilometre descent with an elevation gain of 370m? On a scooter? From Svatobor, which lies at an altitude of 845 m? On sturdy off-road scooters with two-disc brakes, this forest ride is an experience of a lifetime.



May - June Sat, Sun; July - August Mon - Sun; September - October Sat, Sun



In and around Sušice



[www.offpark.cz](http://www.offpark.cz)

More info: [Pilsen Region](#)



# Techmania Science Center in Plzeň

Interactive fun packed with exploration, discovery and experimentation.

It is located in the historical buildings of the Škoda factory in Plzeň. The Science Center offers exhibitions consisting of interactive exhibits that present interesting natural laws or phenomena, and mathematical or physical principles in a popular way. The gyroscope, 3D planetarium, programmes in workshops and laboratories, short films projected on a giant interactive globe and entertaining science make for a unique and unusual experience for everyone.



opening hours: Mon - Fri 8.30 a.m. - 5:00 p.m.; Sat - Sun 10 a.m. - 6:00 p.m.



Plzeň



[www.techmania.cz](http://www.techmania.cz)

More info: [Pilsen Region](#)

# Puppet Museum in Plzeň

Stories on a thread - hundreds of puppets from the past and present, a comprehensive history of puppetry in Czechia, the opportunity to try out puppetry in the museum theatre.

Puppets have delighted and entertained generations of people for many years, but puppets also have their own personal stories. Some have toured with theatres, others have made entire audiences laugh a thousand times, while some have appeared in terrifying childhood dreams or become famous around the world. Puppets enable us to experience almost anything, to push the limits of the human imagination.

The museum's exhibitions are dedicated to the puppetry of Plzeň from the beginning to the present day. There are interactive exhibitions, theatre demonstrations and a multi-purpose hall. The legendary Spejbl and Hurvínek puppets, the “revolutionary” Kašpárek and the popular comic duo Grundle and Šlafunda are just a fraction of what there is to see. In addition to the traditional exhibition spaces, the museum also has a small theatre where you can work and learn about the puppets and various guiding techniques - and also act out a story or two. It's the only place in the world where you can rent out a puppet theatre. Visitors can make a small original puppet in Professor Skupa's Puppetry Workshop.



opening hours: Tue - Sun 10 a.m. - 6:00 p.m.



Plzeň - Nam. Republiky 23



[www.muzeum-loutek.cz](http://www.muzeum-loutek.cz)

More info: [Pilsen Region](#)

# Tři Trubky in Brdy

U Tři Trubek is the gateway to Brdy.

Brdy is a vast island of mountain forests in the middle of Bohemia, which has been used, changed, but not inhabited by man for centuries. Even this seemingly inhospitable area is home to some valuable treasures - water, wood, peace, extensive moors, peat bogs, seas of stone and meadows.

The Brdy Nature House is the gateway to the unique Brdy Protected Landscape Area. It is located in the former farm buildings of the Tři Trubky hunting lodge, which is a cultural heritage site. This visitor centre's indoor and outdoor exhibitions present the natural, cultural and historical sights of the unique Brdy Protected Landscape Area, an island of mountain forests in the middle of Bohemia. The region's hard life, dark military history and contemporary nature conservation are presented in a unique exhibition, where visitors can read some fascinating facts, play games, look for traces of the people who lived here long ago, and learn about the cycle of history against the backdrop of human destinies. They'll also enter the military area and see what had to be done before the firing ranges were created, and what conditions were like there. From aftermath of military drills they come to an oasis with a treasure island. Younger visitors will be welcomed and accompanied by the grass ant, which builds its nests on the sunny edges of the Brdy forests, pastures and meadows.



closed Mondays; Tue - Sun 9:00 a.m. - midday and 1:00 - 5:00 p.m. (from 1 April to 30 September)



Strašice



[www.dumprirody.cz](http://www.dumprirody.cz)

More info: [Pilsen Region](#)



# Moulis farm in Milínov

An experience for the whole family.

The eco-farm in the village of Milínov is a place where children can “break away” from the routine of city life for a few hours. They can try out activities associated with life on the farm and also taste the products they make themselves.

In Milínov, in the Plzeň region, the Moulis family runs a new agritourism attraction - their farm is dedicated to children's education and introduces visitors to life on a farm. Children not only learn about how to make butter or bake bread, but can also try the whole process themselves - and of course taste them afterwards. For visitors from far and wide, the farm also provides cooking classes as well as horseback rides in the beautiful surrounding countryside.



opening hours: individually (for appointments and information on weekdays from 8.00 a.m. to 3.00 p.m.)



Milínov 99, 332 04 Milínov

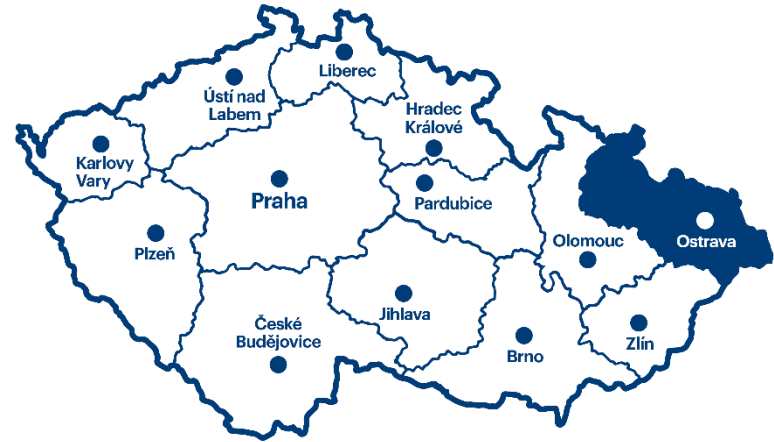


[www.farmamoulisovych.cz](http://www.farmamoulisovych.cz)

More info: [Pilsen Region](#)







Tips on places for family days

# Moravian-Silesian Region

# SKALKA Family Park

A unique corporate event in Ostrava and yet in the heart of nature.

The venue has both **indoor and outdoor spaces**, so you can hold your event in any weather.

For visitors and their events there is a hall for 100 people, a restaurant with a terrace for 130 people, a lounge for 30 people and the entire outdoor area for events for up to 5,000 people.

Tasty catering, quality technical facilities and a wide range of options for adjusting the space according to the needs of the event are offered as a matter of course. It goes without saying that parking is available. There are three car parks with up to 250 parking spaces.



Mon, Tue closed, Wed - Sun 2:00 p.m. - 6:00 p.m.; events as requested by the client



Skalka Family Park, Vřesina 907, Vřesina



[www.skalkaostrava.cz](http://www.skalkaostrava.cz)

More info: [Ostrava Convention Bureau](#)

# If you've not visited Landek, you've not visited Ostrava!

**Landek Park is a popular and attractive suburban recreational complex that is sure to appeal to history lovers, as well as organisers of cultural events, especially Family Days.**

The connection between the Mining Museum as a technical heritage site and Landek Hill as a national natural heritage site with rich vegetation and wildlife makes this a unique and attractive location in Ostrava Petřkovice.

Close to the confluence of the Odra and Ostravice rivers (1.5 km from the D1 motorway exit), visitors will find knowledge, relaxation and entertainment. They can explore the underground of the mine, visit the chain changing rooms, ride the original mine train from the 1960s or see the mining rescue exhibition.

The 35-hectare complex also includes a sports and relaxation area, including a camp and catering facilities. Catering is provided as a matter of course.



ad hoc



Pod Landekem 65, 725 29 Ostrava-Petřkovice



[www.landekpark.cz](http://www.landekpark.cz)

More info: [Ostrava Convention Bureau](#)



# Family days in the Oder Hills

HEIPARK Tošovice is a complex offering plenty of entertainment, rest and relaxation in the middle of the beautiful landscape of the Oder Hills. An attractive location suitable for corporate and private events.

For Family Days, HEIPARK really has everything in one place:

- a restaurant,
- accommodation
- a fun-packed complex for children and their parents.

Hold your event here, take advantage of the great location and the opportunity to enjoy all the attractions the complex has to offer for your “family day”.

**The style of your event depends on the time of year you want to hold it in.**



all year round



HEIPARK, Tošovice 72, 742 35 Odry



[www.heipark.cz](http://www.heipark.cz)

More info: [Ostrava Convention Bureau](#)



# Bílá Ski Resort

This resort in the village of Bílá in the middle of the beautiful Beskid countryside will surprise you with some great facilities for family days.

The style of your event depends on the time of year you decide to hold your Family Days. **If it's a “snow” event, you can use the ski slope and ski tests, as well as ski races for the whole family; if you opt for spring or summer, there is a space that is ideal for cycling activities, testing cars, motorbikes, and a children's park...** The area at the bottom of the cable car and in the surrounding hills offers a wealth of possibilities.

Accommodation and catering are available in the **hotel and numerous restaurants** close by. There is also a large car park.

The staff at the venue are experienced in organising events and will be happy to advise you as you prepare your event.



for ad hoc events, all year round



Bílá Ski Resort, Bílá 173, 739 15 Staré Hamry



[www.skibila.cz](http://www.skibila.cz)

More info: [Ostrava Convention Bureau](#)

# Family days with the white lady

Silesian Ostrava Castle is the perfect place for a non-traditional Family Day. In the middle of a modern city and yet in historical premises, and who knows, maybe a white lady will come along.

After its refurbishment, Silesian Ostrava Castle is now one of the most popular places for organising unusual events. Countless cultural and social events are held in the castle and the surrounding area.

**You can use only part of the castle for your event or book the whole site.** The castle courtyard and chambers are a great backdrop for your Family Days, while a programme adapted to suit these spaces will guarantee an unusual experience for everyone involved. The castle staff have years of experience organising events like these and will help you with the programme and catering.

The capacity of the space depends on the overall concept of the event.



during events by appointment, October - March



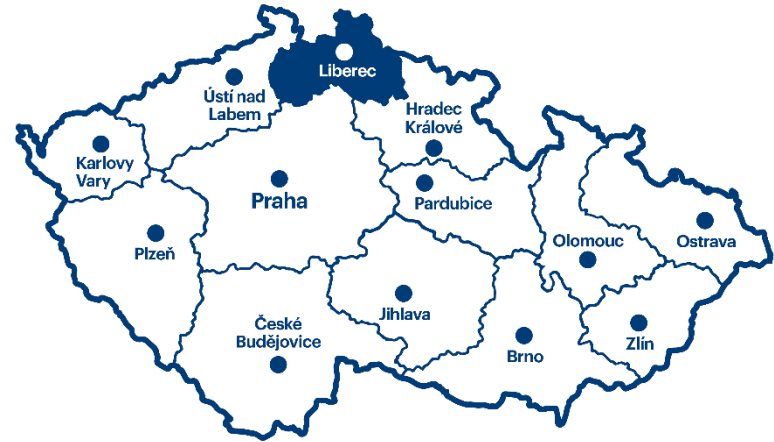
Silesian Ostrava Castle, Hradní 1, Slezská Ostrava, 701 00



[www.slezskoostravskyhrad.cz](http://www.slezskoostravskyhrad.cz)

More info: [Ostrava Convention Bureau](#)





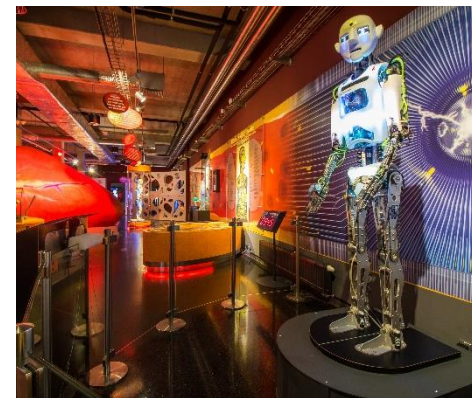
Tips on places for family days

# Liberec Region

# Science as a synonym for smart entertainment

The unique and unparalleled iQLandia in Liberec prides itself on being the largest science centre in the country, where science is fun for visitors of all ages. The science and entertainment centre with its planetarium, containing 11 interactive exhibits and some 400 interactive attractions, offers an endless range of smart entertainment that can't fail to win over even the most fastidious of visitors.

However, iQLandia is also very welcoming to corporate groups, offering them its most interesting spaces and accompanying team-building activities. The five-storey building provides training rooms, a planetarium and smart workshops, a laboratory and an auditorium with catering facilities. All corporate events can be complemented by an effective tailor-made science show, themed workshops with experienced lecturers, a tour of the exhibitions or refreshments in the form of molecular cuisine. For quiet, unusual and undisturbed meetings, it offers a relaxation zone or a sun terrace on the roof of the centre.



Mon - Fri 10:00 a.m. - 4:00 p.m., Sat - Sun 10:00 a.m. - 6:00 p.m.



Nitrianská 410/10, 460 07 Liberec



[www.iqlandia.cz](http://www.iqlandia.cz)

More info: [Liberec Region](#)



# Visiting the oldest garden in our country

Liberec Zoo boasts the title of the oldest garden in the Czech Republic and has seen a number of changes and innovations during its long history. However, what hasn't changed in over a century is their approach to nature, with them actively striving to protect it and playing an important role in keeping it alive.

The origins of Liberec Zoo date back to 1904, when it was opened to the public in September. It gradually expanded year by year, from keeping birds, farm animals and wild forest animals, to keeping more exotic and endangered animals, which attracted thousands of visitors. Today, the zoo takes care of more than 170 species of animal and is involved in a number of projects focusing on their protection, as well as breeding them. It prepares a number of unusual experiences for visitors, during which guests can try working as a zookeeper in the beast of prey or monkey section, tour the entire complex with an experienced guide or arrange a unique team-building event based on interaction with the animals.



Mon - Sun 9:00 a.m. - 5:00 p.m.



Lidové sady 425/1, 460 01 Liberec




[www.zooliberec.cz](http://www.zooliberec.cz)

More info: [Liberec Region](#)

# A romantic ride through the Jizera Valley

Are you familiar with the Jizera Pacific? It's a local railway line winding its way along the Jizera River on the route from Martinice v Krkonoších to Rokytnice nad Jizerou. It runs through the western Krkonoše Mountains, allowing you to chill out and watch the countryside pass by through the window.

The picturesque station in Martinice v Krkonoších dates back to 1871 and boasts one unique feature, the original electromechanical signalling system, with the highest number of mechanical signals in the country. If you're travelling from Martinice, you can admire the beautiful panorama of the mountains dominated by Žalý, which is hidden behind the trees for a while, only to rise again after the train passes through Jilemnice. Behind Víchová, an iron bridge over the river forms the gateway to the Jizera mountain valley - the line sometimes loses itself in a cutting in the forest, but the train then soon runs on a high embankment or bridge over the river. The ride is made all the more interesting by the 80-metre tunnel near Hradsko. The train passes through Poniklá and Jablonec nad Jizerou, and ends in Rokytnice nad Jizerou, from where you can continue by bus along the road through the Jizera Valley to Harrachov. The route of the Jizera Pacific line has its own special charm whatever the season, including winter.

 according to the timetable

 Martinice v Krkonoších station

 [www.nadrazimartinice.cz](http://www.nadrazimartinice.cz)

More info: [Liberec Region](#)



# A forest park guarded by a giant

Below Mazová Horka is a seven-hectare forest with a forest park, which is guarded by the giant Máza. You can't miss the giant, as he's located right by the entrance to the Horka Forest Park.

The enchanted giant Máz at the Forest Park in Podještědí is an unforgettable experience. The concrete giant is 30 m tall and also has motion and noise sensors. Just get close to the statue and the giant starts snoring loudly. And if you shout in his ear, the giant will even speak. He'll say things like: "What's going on?" or "Why are you waking me up?" or "Don't yell in my ear! I'm not deaf!"

The Horka Forest Park is located a short distance from Liberec, close to Ještěd. Information panels with descriptions and pictures of animals and plants are placed throughout the park. In the forest park there is a maze of spruce trees, a lookout tower with a viewing platform, a forest pond, a restaurant, an amphitheatre for outdoor theatre and lectures, a rope centre, wooden houses on stilts for children's camps and a wooden castle.



open 24 hours



463 43 Světlá pod Ještědem

More info: [Liberec Region](#)



# Endless adventures at Lake Mácha

If there's one place that is perfect for family days, it's Doksy! A picturesque town dominated by Lake Mácha. It offers everything you need from a proper holiday resort: hotels and guesthouses, well-maintained beaches and paths, a Renaissance chateau with a park, and on top of that, a preserved historical core with several timbered buildings.

Children love Doksy because here, in the attic of the Municipal Library, they can meet Pinda, Bobík, Myšpulín and Fifinka, the heroes of the Čtyřlístek comic. At the Čtyřlístek Museum you can take a look into Fifi's kitchen, see Myšpulín's inventions and finally go for a wander with Čtyřlístek along the nature trail around Blat'ák. The role of the well-known pond is of course played by the nearby Lake Mácha; the nature trail follows the yellow footpath markers.

On the main beaches in Doksy and Staré Splavy there are the ever-popular water slides, slides, trampolines, water swings and other attractions, while many places hire out boats, pedal boats and surfboards, and from May to September cruise steamers cross the lake. In winter, apart from skaters and cross-country skiers, Lake Mácha is also popular with yachters who sail across the frozen surface on specially adapted sailing boats.



according to the individual sites and depending on season

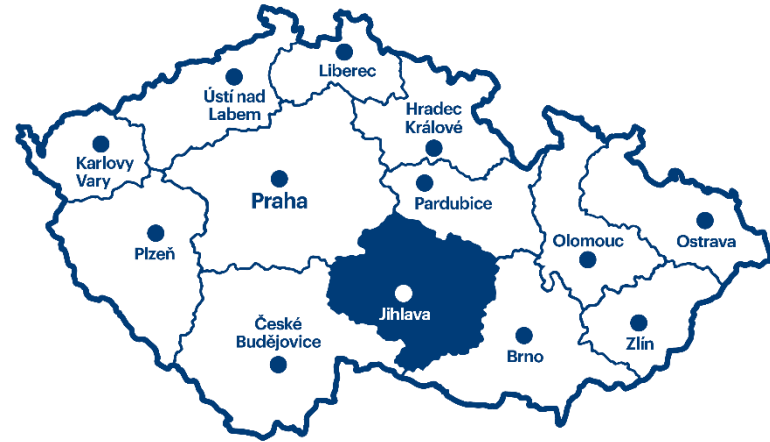


Doksy



[www.zamekdoksy.cz](http://www.zamekdoksy.cz)

More info: [Liberec Region](#)



Tips on places for family days


# Vysočina Region

# Panský dvůr Telč

A visit to fairy-tale Telč - a UNESCO-listed town with a beautiful chateau and a unique historical centre - is always a good idea. Especially since the complex of once neglected farm buildings has been extensively renovated into an interactive leisure and tourism centre but continues to honour its history.

An amusement park has been built on a former farm just a short distance from the town centre, including a unique indoor rope centre with drytooling, a climbing wall, a great playground, its own brewery, restaurant, café and comfortable accommodation. It also offers massages, e-bike hire and a sensory garden full of aromatic flowers and herbs. Adults and children of all ages are sure to enjoy it here.

The complex also offers excellent facilities for corporate events, including accompanying activities to delight even the most demanding of guests.

 all year round

 Telč

 [www.panskydvurtelc.cz](http://www.panskydvurtelc.cz)

More info: [Vysočina Convention Bureau](#)



# Žďár nad Sázavou Chateau

This former Cistercian monastery and now the Kinský family chateau, with its unique location directly below the Pilgrimage Church of St. John of Nepomuk on Zelená hora offers fun and knowledge for the whole family.

The chateau includes a museum that will take you back through history. An amazing play of light and shadow, music, animated stories and other elements give you an engaging look at the 770 years of history of the chateau and its surroundings. The exhibition will even be entertaining for children who are not normally into history.

You can also take the usual sightseeing tours around the chateau, whose unique genius loci also makes it the perfect choice for corporate or social events.



all year round



Žďár nad Sázavou



[www.zamekzdar.cz](http://www.zamekzdar.cz)

More info: [Vysočina Convention Bureau](#)



# Eden Centre Bystřice

It's is said that Vysočina is a bit like spending the holidays at grandma's. This is doubly true at the Eden Centre in Bystřice.

A Highland village with farm animals, manor housing, craft demonstrations, treasures from the soil, an eco-pavilion and much more. The Eden Centre is a little paradise for anyone who enjoys discovering and exploring things around them. The centre strives to connect the past, present and future. It offers inspiration, entertainment for children and adults, education and enlightenment.

This original place with a touch of history and tradition also hires out its premises for various types of corporate events. Take advantage of the unique thematic "from the past to the future" timeline and hold your gathering here.



daily during the season, off-season on weekends and special occasions



Bystřice nad Pernštejnem



[www.edencentrum.cz](http://www.edencentrum.cz)

More info: [Vysočina Convention Bureau](#)



# Bohuslavice Farm

The Farm, with its own distillery, restaurant and stylish accommodation, is located in the middle of the picturesque village of Bohuslavice in the Telč region.

Visit the Mini-Zoo and get an up-close look at all its inhabitants. In Bohuslavice you can see farm and exotic animals and enjoy lots of fun on the outdoor playground connected with the gym. Adults can ride a horse, children can take a pony ride.

However, the layout of the farm also has plenty to offer for companies. They'll be happy to arrange all kinds of accompanying activities for you, from carriage rides to the chance to taste various types of their own spirits.



all year round



Bohuslavice near Telč



[www.hospodarskydvur.cz](http://www.hospodarskydvur.cz)

More info: [Vysočina Convention Bureau](#)

# Šikland amusement park

Šikland near Zvole nad Pernštejnem is one of Czechia's largest entertainment complexes. It includes the western town of Šiklův mlýn, the haunted Draxmoor Chateau, a natural water park and other attractions.

It is especially popular with families with children, who come here for fun and relaxation. There's a saloon, a smithy, a gambling hall, a sheriff's office and an American-style train station from the end of the last century. The natural amphitheatre and plaza hosts daily theatre and dance performances, western shows, parades, nightly fire shows, and many other events with a Wild West vibe.

The 100-hectare site and the team of event specialists promise a perfect experience for companies and their employees.



general public: daily in July and August; corporate events: all year round

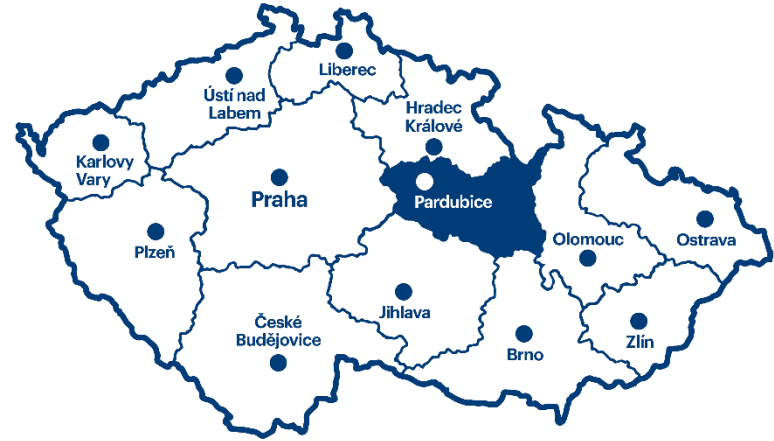


Zvole nad Pernštejnem



[www.sikland.cz](http://www.sikland.cz)

More info: [Vysočina Convention Bureau](#)



Tips on places for family days

# Pardubice Region

# A motor racer for a day

Want to enjoy a nice family day out? Hold your celebration in a place where even adults can have fun like little boys.

Besides being lots of fun, the Autodrome in Vysoké Mýto also covers a large area. This makes it suitable for large company celebrations, especially those with a focus on motoring. The biggest experience is sure to be racing in loaned go-karts. Children can also test their skills on the traffic playground or have fun at the skatepark. The large space offers plenty of opportunities for other accompanying activities.



opening hours: by appointment



Dráby 45, Litomyšlské Předměstí, 566 01 Vysoké Mýto



[www.autodromvmyto.cz](http://www.autodromvmyto.cz)

More info: [East Bohemia Convention Bureau](#)



# A trip into the past in the Land of the Celts

Take a trip into the past and see how our ancestors lived. Taste traditional dishes and drinks and spice up your corporate family day with a themed accompanying programme.

Any celebration in the Land of the Celts is sure to be an unforgettable adventure. The entire complex or selected parts can be rented for corporate events. In the open-air museum, you can tuck into authentic Celtic feasts and banquets, offering a variety of delicacies, from cold starters to hot dishes and desserts. Be sure to try the delicious homemade mead. Celtic-style music will add a special charm and atmosphere to your event, and for those who want to enjoy nature and relaxation, there's outdoor seating where you can enjoy a barbecue on a Celtic fire.



opening hours: 10:00 a.m. - 4:00 p.m., summer season: 10:00 a.m. - 6:00 p.m.



Nasavrky 409, 538 25 Nasavrky



[www.zemekeltu.cz](http://www.zemekeltu.cz)

More info: [East Bohemia Convention Bureau](#)



# Fun at na Špici: When fun meets nature!

Park na Špici is a paradise of fun and relaxation for children and adults. It lies in a beautiful natural spot by the Elbe River.

It's the perfect place for family days out. Active types will be thrilled to book the multi-purpose sports field, where they can play tennis, basketball, volleyball, football or soccer tennis. Sports equipment can be rented by arrangement. Paddleboards, canoes and pedal boats are also available for hire in the summer. How about a day out on the boards together, and rounding off the evening with a barbecue in the covered gazebo?



opening hours: Mon - Thurs 10:00 a.m. - 8:00 p.m., Fri - Sun 10:00 a.m. - 9:00 p.m., or by appointment



Park Na Špici, Pardubice



[www.sup-pardubice.cz](http://www.sup-pardubice.cz), [www.naspici.eu](http://www.naspici.eu)

More info: [East Bohemia Convention Bureau](#)



# Virtual reality and interactive entertainment at the IQ Park

Are you into virtual reality, modern technology and sports simulators? Then the IQ Park at the Pardubice IDEON is just the place for you.

A park you definitely won't get bored in! The site is packed with interactive attractions and is ideal for smaller groups of around 20 - 30 people.

Test your skills and learn how the state-of-the-art attractions work. There's also an interactive climbing wall with a projection where you move to control the game elements, and much more. Want to try riding a motorbike or driving a car in virtual reality? Or bet on which member of your team will win the biathlon? Compete in sports disciplines or test your brain in knowledge quizzes.



opening hours: Mon - Fri by appointment, Sat - Sun 10:00 a.m. - 8:00 p.m.



Jiráskova 1963, 530 02 Pardubice I-Zelené Předměstí



[www.iqparkideon.cz](http://www.iqparkideon.cz)

More info: [East Bohemia Convention Bureau](#)

# Pardubice Racecourse

Large A-to-Z events tailored to your needs? The Pardubice Racecourse is perfect for this.

The racecourse offers a huge area for hire, making it ideal for large events for up to several thousand participants. Festivals and children's days are regularly held there. A restaurant to seat more than 300 people, indoor spaces of various sizes, outdoor stands, mobile fencing, party tents and other equipment are all available for events.

The Racing Association will provide you with a lavish accompanying programme of activities to suit your needs. And if you're interested in the Racecourse itself, it's no problem to arrange a guided tour.



opening hours: by appointment



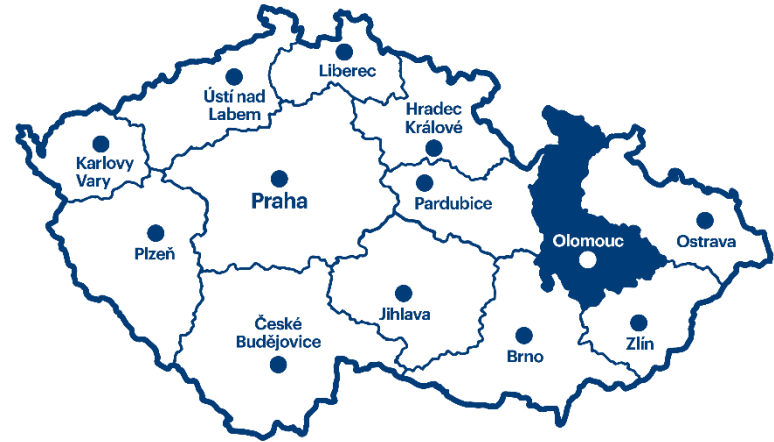
Pražská 607, 530 02 Pardubice



[www.zavodistepardubice.cz](http://www.zavodistepardubice.cz)

More info: [East Bohemia Convention Bureau](#)





Tips on places for family days

# Olomouc Region

# Relax with the whole family in the Velké Losiny Thermal Park

If you want to have fun and enjoy your time together, you need a space that is welcoming to you and your children. What could be better than a place where you can not only have fun, but also enjoy some healthy time with your whole family.

The thermal park has 9 thermal pools with the water temperature ranging from 30 to 36°C, depending on the type and focus. There are 5 indoor pools with beneficial thermal water. There's also a water world, which is perfect for sports as well as being a place to relax and rest all year round. It includes an Active Pool, Relaxation Pool, Thermal Pool, Panoramic Pool, Children's Pool and Toboggan.

The 4 outdoor swimming pools are open during the summer season (May-September) and offer attractions such as a water slide, a spout and water umbrella, bubble seats and loungers and hydromassage jets, a slide, water jets and a mushroom.

For a healthy mind it's important to learn to relax and meditate, to know how to bring the body and mind into balance. If we can relax the mind, we're well on our way to finding mental balance. The sauna world and a variety of professional massages can help you do this.



all year round 10:00 a.m. - 8:00 p.m.



Komenského 235, 788 15 Velké Losiny



[www.termaly-losiny.cz](http://www.termaly-losiny.cz)

More info: [Central Moravia & Jeseníky Convention Bureau](#)



# Gold mining open-air museum

In a place known as The Valley of the Lost Mines, the mediaeval open-air mining museum on the Olešnice River near Zlaté Hory offers a tour of a replica of a period gold ore mill from the 14th century, the height of the gold mining boom in this region.

It is a mining settlement with a replica of a wooden mining cabin, presented with an outdoor and a residential part. In the Middle Ages, the mining settlement was a closed fortified complex where the mined ore was processed and where the miners lived a normal life. Close by the mining settlement there is a racetrack with competition hills. This place hosts the annual gold-panning competitions to win the town mayor's travelling pan, and in 2010 it was also the venue of the World Gold Panning Championship.

There is also a replica of a smelting furnace. The site consists of two parts. The outdoor covered part is the smelter, while the indoor part is a working hall with bellows and a warehouse.

You can explore and try all these out for yourself.

 May - October 10:00 a.m. - 5:00 p.m.

 Rejvíz - Zlaté Hory

 [www.krajpokladu.cz](http://www.krajpokladu.cz)

More info: [Central Moravia & Jeseníky Convention Bureau](#)



# Hrubá Voda Resort

The Hrubá Voda Resort, which includes the Hluboký Wellness Hotel, is located in the beautiful valley of the Bystřice River, below the steep slopes of the Oder Hills and the Low Jeseník mountains. An enchanting setting, peace and quiet, nature, and excellent access by car and train.

The Hrubá Voda Resort offers lots of summer and winter activities as the perfect opportunity to spend time with the family.

Summer activities - bobsleigh track, Hrubík nature trail, Treetop Trail, Hrubík the Elf Children's Park, horse riding, miniature golf, disc golf, bungee trampolines, archery, multi-purpose playground.

Winter activities - two ski slopes, four-seater cable car, children's chairlift, ski school

The Hluboký dvůr superior Wellness Hotel offers accommodation in 32 rooms with a total of 80 beds. The hotel's wellness centre spa offers 2 saunas, aromatic steam and salt rooms, power showers, a hot tub overlooking a giant aquarium, a wellness bar, a cooling pool, relaxing heated benches and a chill-out room. The restaurant offers the option to set aside part of the space for a private party for family celebrations, corporate meetings or other special occasions.



Wed, Sat, Sun 9:00 a.m. - 6:00 p.m.



Hrubá Voda 21, 78361 Hlubočky



[www.resorthrubavoda.cz](http://www.resorthrubavoda.cz)

More info: [Central Moravia & Jeseníky Convention Bureau](#)



# Aquapark Olomouc

Relax and have fun in the water park! The Aquapark includes indoor and outdoor pools, an Activity Park, Saunas, Massages and a Children's Park. You can enjoy some time in the swimming pool, get a massage in the massage pools and hot tubs, and don't forget to have fun in the children's paddling pool.

Activity Park - the rope park in the outdoor part of the aquapark, with an entrance from the car park, includes a 3D maze, 14x10 m and 6x6 m air trampolines, a sand laboratory, fun play sets for children, a mud pit, swings and springers.

Wellness Zone - the perfect escape from the everyday hustle and bustle. Relax in the sauna or tepidarium and pamper yourself with a relaxing massage – that is not just a dream here.

Akvárko children's corner - open daily and great fun for all ages. We'll keep your children entertained and you can relax with us. There are lots of lovely toys, games and friends waiting for your kids.



Mon: 2:00 - 8:00 p.m., Tue - Fri: 10:00 a.m. - 8:00 p.m., weekends 9:00 a.m. - 8:00 p.m.



Kafkova 21, Olomouc



[www.aqua-olomouc.cz](http://www.aqua-olomouc.cz)

More info: [Central Moravia & Jeseníky Convention Bureau](#)

# Fortress of Knowledge

The Fortress of Knowledge is an interactive museum of Palacký University in Olomouc, presenting science and research to all ages in an entertaining way.

The museum is housed in a building with exceptional architecture and an equally impressive history, in a former military warehouse dating from the 19th century, which has been converted into a state-of-the-art science centre. With its unique atmosphere, combining rich history with the dynamism of the present day, Fort Science is an inspiring setting for public gatherings. The complex includes a baroque powder room and an amphitheatre, which is a great outdoor projection space in any sense of the word.

This makes the centre the ideal venue for conferences, lectures, workshops, events or visits by distinguished guests.



Tue - Fri 9:00 a.m. - 5:00 p.m., Sat - Sun 10:00 a.m. - 6:00 p.m.

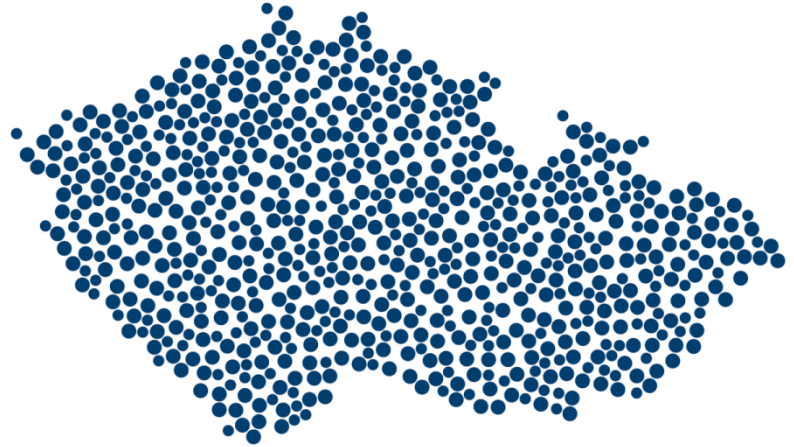


Areál Korunní pevnůstky, 17. listopadu 7, 779 00 Olomouc



[www.pevnostpoznani.cz](http://www.pevnostpoznani.cz)

More info: [Central Moravia & Jeseníky Convention Bureau](#)



**Next month we'll be back with tips on unique experiences for VIP clients!**

**Czech Convention Bureau**

[www.czechconvention.com](http://www.czechconvention.com)