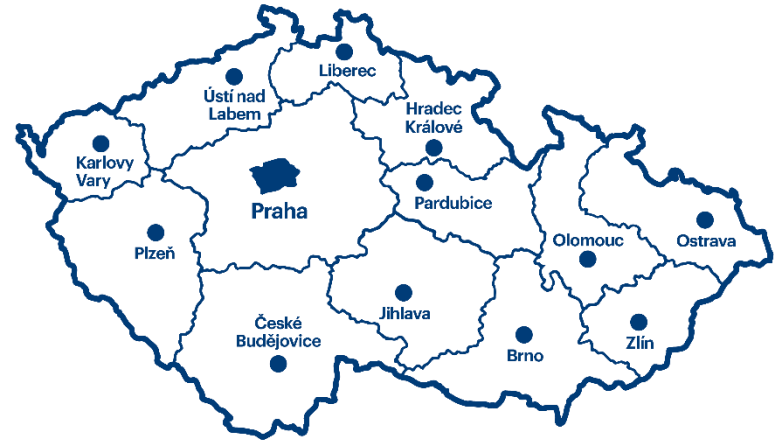


# Inspirational Monthly by Czech Convention Bureau

Romantic venues



Romantic venues

# Prague

# Martinic Palace

Romantic places are often surrounded by legends and mysteries. Among such buildings is the Martinic Palace in the magical Prague Hradčany, an area connected to dozens of legends and mysterious tales.

The Martinic Palace, protected as a historical monument, was built from the second half of the 16th century and gradually remodelled into its predominantly Baroque form. It remained in the possession of the Martinic family, from whom it takes its name, for 200 years – until the end of the 18th century. Before that, however, four Baroque buildings stood on this site, one of which was inhabited by Lady Ovka, a court lady. According to legend, she occasionally appears here, accompanied by a fiery dog.

For group events, it is possible to rent the enchanting Grand Hall with Renaissance frescoes, the Stables, also decorated with wall paintings, one of the adjoining halls, or the restaurant, courtyard, or terrace offering a fairy-tale view: lush greenery of the castle gardens interspersed with the towers of Prague Castle and neighbouring palaces. The picturesque Martinic Palace provides an impressive backdrop for festive gatherings, corporate celebrations, conferences, lectures, artistic performances, and other social events.



7 halls (for 25 to 30 persons), overall 1,000 persons



wi-fi, catering, wheelchair access, private parking



Hradčanské náměstí 67/8



[www.martinickypalac.cz](http://www.martinickypalac.cz)

More info: [Prague Convention Bureau](#)



Galerijní a.s. ↑↓

# Žofín Palace

In the heart of Prague, on a green island washed by the waters of the Vltava River, with views of the city's most beautiful landmarks, stands the magnificent Žofín Palace. This location is the true embodiment of a romantic venue for hosting group events.

The Renaissance palace was built in the first half of the 19th century on Slovanský Island and is named after the wife of a member of the imperial family. Throughout its history, it has been a meeting place for the persons of Prague as well as notable personalities who have enjoyed the hospitality of Žofín Palace. It hosts social, political, cultural, and business events of exceptional local and international significance.

The palace's Great Hall captivates visitors not only with its spaciousness but also with its dazzling decorations. A more intimate atmosphere with even richer ornamentation can be found in the Mayor's Lounge. The Small Hall exudes a dignified impression, while the Knight's Hall, with its prominent vaults in the palace basement, offers an entirely different ambience steeped in historic romance. On warmer days, guests at Žofín can also enjoy the romantic setting of the palace's outdoor garden and terrace, with views of the park, the river, the National Theatre building, and many other historical landmarks in the immediate vicinity.



NKL Agency ↑↓



4 halls (Great Hall – 800 persons, Small Hall – 200 persons, Mayor's Lounge – 100 persons, Knight's Hall – 200 persons).



AV technology, air conditioning



Slovanský ostrov 226, 110 00 Prague 1



[www.zofin.cz](http://www.zofin.cz)

More info: [Prague Convention Bureau](#)

# Lobkowicz Palace

The Renaissance Lobkowicz Palace, dating from the 16th century, features beautiful spaces adorned with items from private collections of inestimable artistic and historical value, and breathtaking views of Prague. Owned by the Lobkowicz family for more than four hundred years, the palace is home to a permanent exhibition while also serving as a venue for a wide variety of celebratory and professional events.

In the southern part of Prague Castle, with an impressive view of Malá Strana, the Old Town, and the Vltava River below, stands the only privately owned building within the complex: Lobkowicz Palace. The palace, which has undergone numerous modifications since its construction began, houses artistic treasures by Bruegel, Canaletto, and Rubens, as well as handwritten musical scores by Beethoven and Mozart. Lobkowicz Palace boasts elegant halls, the largest of which – the Imperial Hall – can accommodate up to 350 persons. This magnificent Baroque space impresses with its height, wall paintings, and massive chandeliers. The other four historic halls can host a further 300 guests, and a terrace with city views is also available. A dozen exquisite lounges offer a more intimate setting. For centuries a witness to events that shaped history, Lobkowicz Palace is today an extraordinary venue for hosting diverse group events: meetings, conferences, concerts, and celebrations. It is a place where Renaissance and Baroque merge perfectly, where the nobility and elegance of bygone times meet the pulse of the modern era.



16 halls (Imperial – 350, Balcony – 150, Concert – 120, other halls – 15 to 80 persons), total capacity 900 persons.



Wi-Fi, catering, accompanying cultural programme



Jiřská 3, Prague 1

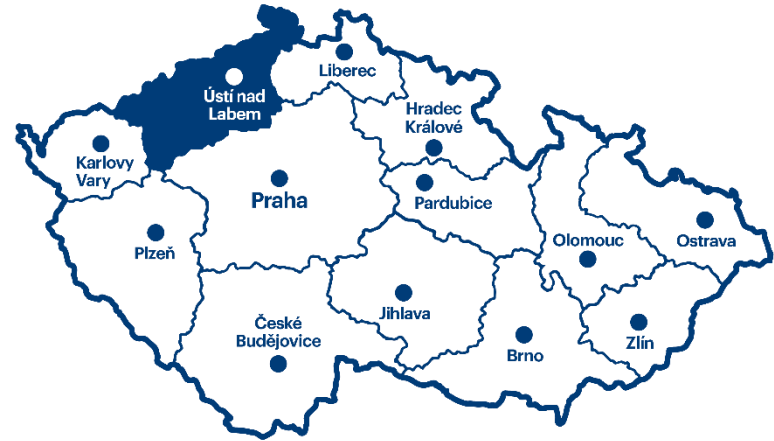


[www.lobkowicz.cz](http://www.lobkowicz.cz)

More info: [Prague Convention Bureau](#)

House of Lobkowicz ↑↓





Romantic venues

# Ústí nad Labem Region

# Červený Hrádek u Jirkova

Becoming a lord or lady of the chateau, even if just for a moment, is surely a dream many would love to fulfil. At Červený Hrádek Castle near Jirkov, this opportunity is available all year round.

Located at the foot of the Krušné Mountains, the chateau is surrounded by a beautiful park with a small pond, offering romantic walks and excursions into the surrounding area. As part of the chateau accommodation, guests can also enjoy private wellness facilities – a whirlpool or sauna accompanied by a bottle of chilled sparkling wine.

You can also savour delicious meals in the chateau restaurant, where breakfast, lunch, and dinner are prepared for you. For public events, the chateau offers a grand hall, which hosts not only wedding ceremonies but also concerts and lectures.



Main Hall – 150 persons + adjoining area



presentation and conference equipment



Jirkov u Chomutova



[www.zamek-cerveny-hradek.cz](http://www.zamek-cerveny-hradek.cz)

More info: [Ústí Region Convention Bureau](#)

# Oblik Resort

Even the location itself is romantic. Resort Oblík is situated right at the foot of the mountain of the same name – Oblík. This volcanic hill gives the place its charm and unique character. At its peak lies an energy point marking where positive energy flows from the depths of the earth.

The resort offers a variety of packages – romantic escapes from the city, yoga, meditation and relaxation stays, as well as facilities for events in the elegant style of a luxury countryside estate.

Here, you can retreat from autumn and winter in the beautiful Wellness & Spa, while chef Josef Pindur pampers you with exquisite gastronomy. Thanks to its outstanding restaurant, Remedi, Resort Oblík is also the perfect venue for a corporate party. In summer, you can even sleep under the stars in beautiful glamping tents.



100 – barn, courtyard – 80, restaurant – 60 persons.



complete necessary equipment



Oblík u Loun



[www.oblik-resort.com](http://www.oblik-resort.com)

More info: [Ústí Region Convention Bureau](#)





# Na Seníku U Fořta

**Sleeping in a hayloft? In the heart of Bohemian Switzerland? At U Fořta, it's possible. Gaze at the stars and enjoy a peaceful rest in luxurious haylofts.**

Give your event a true touch of romance. Unique accommodation in luxurious haylofts built on Mezní louka according to original period photographs from 1794. Enjoy peace, privacy and relaxation surrounded by the nature of the Czech Switzerland National Park.

The complex also includes a hotel with conference facilities, a restaurant, outdoor barbecue options, and a relaxing whirlpool. Romance greets you from the very moment you arrive.



Hall - 40 persons and a glass room for 80 persons



complete equipment for presentations



Mezni meadow, Bohemian Switzerland



[www.uforta.cz](http://www.uforta.cz)

More info: [Ústí Region Convention Bureau](#)

# Wellness Hotel Zámeček

A stylish historic complex set in breathtaking nature is the ideal venue for a romantic event, wedding, celebration, training session, or team-building tailored to your needs.

After an active hike through the stunning landscape of Bohemian Switzerland, you can unwind in a stylish sandstone wellness centre located in the former stables. It features a swimming pool, Finnish sauna, and a relaxation area with loungers. In summer, enjoy breakfast on the terrace with a beautiful view of the Bohemian Switzerland countryside.

For your event, you can rent the entire hotel or just the restaurant, the chateau lounge, the outdoor courtyard, and the grassy areas surrounding the hotel. There is also a hall with a billiards table, as well as outdoor spaces.



Hall – 25 persons, restaurant – 30 persons.



complete equipment for presentations including internet



Rynartice



[www.wellnesshotelzamecek.cz](http://www.wellnesshotelzamecek.cz)

More info: [Ústí Region Convention Bureau](#)

# Ploskovice Castle

The Baroque chateau complex, also known as the “Baroque Pearl of the North,” is a sought-after location for films and weddings, as well as a destination for specialised botanical excursions.

As of 2024, Ploskovice Chateau boasts a brand-new exterior, featuring fresh plasterwork and stucco decorations. The chateau complex offers rental options, including a smaller working lounge or the representative chateau hall. Weddings and various events can also take place directly in the chateau gardens. A unique feature of Ploskovice Chateau is its underground artificial caves, known as “grottos”, which are part of the visitor tour. The chateau also houses Café Páv, renowned for its luxurious desserts and lunch menu. Upon arrangement, catering can be provided for larger groups.



Lounge – 30–35 persons, representative hall – 60 persons.



complete equipment for presentations in the lounge

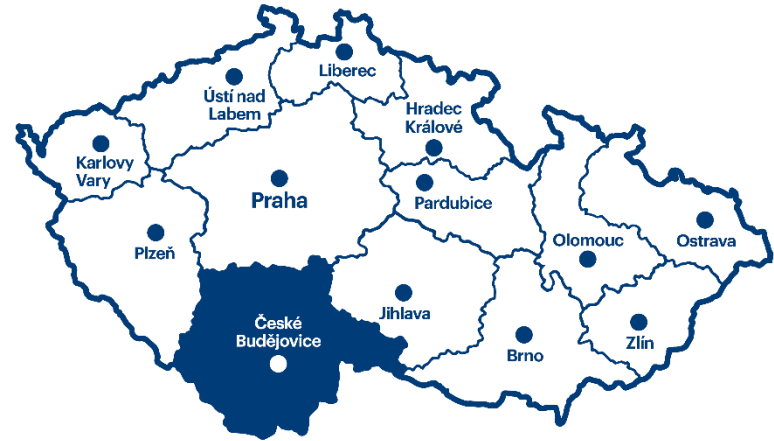


Ploskovice near Litoměřice



[www.zamek-ploskovice.cz](http://www.zamek-ploskovice.cz)

More info: [Ústí Region Convention Bureau](#)



Romantic venues

# South Bohemia

# Malý Oslov - "Hříšňák" near Zvíkov

Beautiful glamping reminiscent of Dirty Dancing takes the form of a small village of cabins, creating the illusion of a perfect world amidst forests above the cliffs of the Orlík Reservoir. These cliffs are part of a unique bird reserve.

Malý Oslov is located near the new D4 motorway, yet you will feel far removed from the hustle and bustle of civilisation. The entire complex has been built on the site of a former holiday retreat, of which only the cabins and shared spaces remain. These have been dreamily furnished in Scandinavian style and are equipped with wood-burning heating, making them habitable all year round.

A communal room with a fireplace, also styled in Scandinavian fashion, is available for use.

The entire complex is perfect for group events seeking peace and nature. Within walking distance, you will find Zvíkov Castle, a brewery, and numerous beautiful trails with breathtaking views.



50–60 beds in cabins + camping options, communal room, outdoor seating



lounge with kitchenette and bar, cabins, outdoor parquet floor with swimming pool, Bedouin tent



Malý Oslov Glamping (Oslov u Písku)



[www.malyoslov.cz](http://www.malyoslov.cz)

More info: [South Bohemia Convention Bureau](#)

# Hotel Svatý Tomáš

**Wellness and Šumava – what more could you wish for? Together, these two words create the perfect image of romance and relaxation.**


The wellness hotel Svatý Tomáš offers a combination of wellness experiences, romantic and luxurious accommodation, and the unspoilt nature of Šumava. Located in near seclusion, amidst deep forests, it sits on the right bank of the Lipno Reservoir in the small mountain hamlet of Svatý Tomáš at an altitude of 970 metres above sea level.

The hotel consists of four interconnected buildings forming a rectangular courtyard, where you will also find a summer restaurant. The nature and forests of Šumava, a hotel with a pool and private wellness centre, tranquillity and seclusion, stylish interiors, the spirit of bygone times, and the proximity of Lipno – all combine to create the perfect recipe for relaxation.



 50 places, 1 conference room

 LCD TVs, flipchart, data projector

 Svatý Tomáš - Přední Výtoň

 [www.hotel-svatytomas.cz](http://www.hotel-svatytomas.cz)

More info: [South Bohemia Convention Bureau](#)

# Hotel Resort Relax

Hotel Resort Relax, located directly on the shores of the Lipno Reservoir, offers everything you need for a successful corporate event, team-building, or training session. Modern conference facilities equipped with the latest technology, top-class catering, and comfortable accommodation are a given.

For moments of relaxation, we provide access to our wellness centre with views of Lipno, where you can enjoy massages, a sauna, or unwind by the pool. The nature of Šumava and the Lipno region also offers unlimited opportunities for outdoor activities such as sightseeing cruises, cycling, hiking, and water sports. Combine work with relaxation in an environment that inspires and fosters better teamwork and creativity. Hotel Resort Relax is a place where experiences and professional services come together in perfect harmony.



3 conference spaces (60, 40, 150 persons).



basic conference equipment and sound system



Dolní Vltavice 44, Černá v Pošumaví



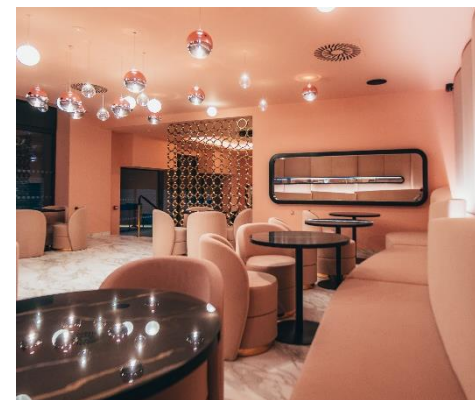
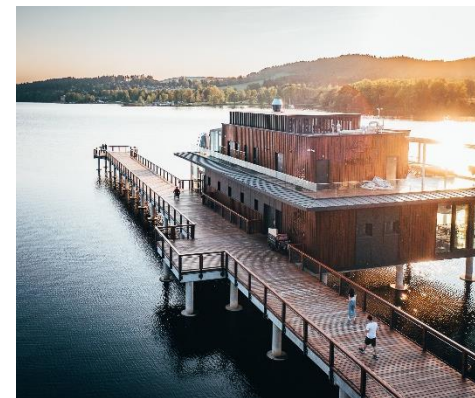
[www.hotelresortrelax.cz](http://www.hotelresortrelax.cz)

More info: [South Bohemia Convention Bureau](#)

# Modern and Romantic - MOLO Lipno

Experience the pleasant modern atmosphere of the unique MOLO Lipno complex. The cosy yet luxurious spaces of this concept ensure an unforgettable experience for your gathering. Exceptional gastronomy made from local ingredients is the perfect finishing touch.

The highlights of the MOLO Lipno concept include outstanding cuisine by chef David Šašek, modern designer spaces, stunning views of the Lipno lake, and a strong focus on local suppliers. Visit South Bohemia on the shores of the Lipno Reservoir and leave with memories that you and your guests will cherish long after.



Café du Lac – 30 persons



data projector, modern café environment



Lipno nad Vltavou, Café du Lac - MOLO Lipno



[www.facebook.com/molocafedulac](https://www.facebook.com/molocafedulac)

More info: [South Bohemia Convention Bureau](#)



# Farmstead with Views of the Lipno Reservoir

Nestled amidst the Šumava countryside, beneath the majestic peak of Plechý and at the very start of the Lipno Reservoir, lies the historic U Medvěda Farmstead, a place that will captivate you with its Genius Loci.

Situated in the heart of Šumava, U Medvěda Farmstead offers the perfect combination of natural beauty, comfort, and year-round opportunities. Behind us stretches the Šumava National Park, while in front, breathtaking views of the majestic Lipno Reservoir open up.

The area surrounding the farmstead is ideal for corporate events and relaxation – from summer cycling and in-line skating trips to winter activities such as ice-skating on the Lipno Trail or skiing at the Hochficht ski resort. Other popular nearby destinations include the Bear Trail (Medvědí stezka), the Schwarzenberg Navigation Canal, and Plešné Lake.

Become part of an unforgettable Šumava experience at U Medvěda Farmstead.



1 conference room – STODOLA (barn) – maximum 50 persons



sound equipment, data projector with screen, special colour lighting

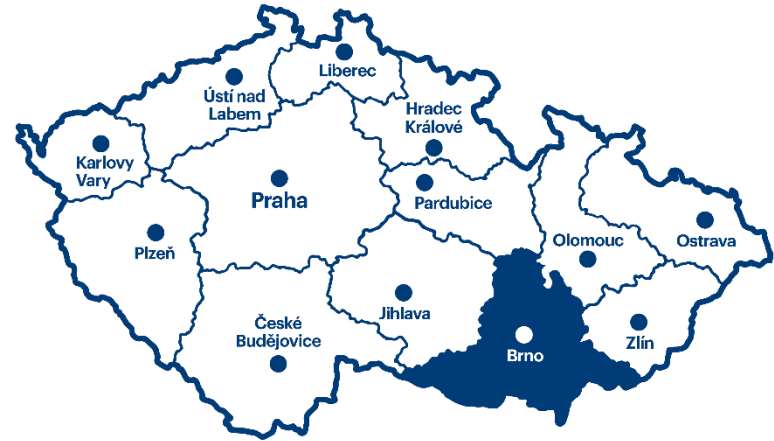


Nová Pec



[www.statekumedveda.cz](http://www.statekumedveda.cz)

More info: [South Bohemia Convention Bureau](#)



Romantic venues

# South Moravia

# Maximus

Do you know what “Prýgl” means in hantec?

That’s what the persons of Brno call the reservoir located to the northwest of the city, offering a wide range of sports, sightseeing, and relaxation activities. Take a steamboat ride to Vevří Castle, try water sports, or enjoy an easy walk to one of the viewpoints offering fantastic views of the surrounding landscape. Stay at Resort Maximus, located directly above the reservoir. The hotel provides perfect conditions for relaxation, but the real highlight awaits you outside. A system of outdoor pools and all types of saunas makes it a paradise for wellness enthusiasts. The cherry on top is the high-quality gastronomy – in summer, you can barbecue under the open sky and enjoy being at one with nature to the fullest!



340



AV technology, Wi-Fi, parking, wellness, bowling



Hrázní 327/4a, 635 00 Brno



[www.maximus-resort.cz](http://www.maximus-resort.cz)

More info: [Brno Convention Bureau](#)

# Anybody

An extraordinary hotel in Brno's Zelný trh promises unpredictable experiences and a generous dose of romance!

It doesn't simply offer a place to stay but, above all, a unique experience – exceptional time spent stepping into the roles of characters from iconic films of the 1960s. Immerse yourself in the worlds of Blow-Up, Pierrot le Fou, Goldfinger, and seven other films that inspired the design of the rooms on the 3rd floor of this historic building. You can stay here entirely incognito, as you won't encounter any staff. Check-in and check-out are handled via a panel located in the building's passageway instead of a receptionist. Guests are provided with themed props, including a film camera with a roll of film, a wardrobe of costumes, or a phone that gives your character assignments. And from there, it's entirely up to you...



0



rooms



Zelný trh 10, 602 00 Brno-střed



[www.anybody.cz](http://www.anybody.cz)

More info: [Brno Convention Bureau](#)

# Amanda

**In Moravia, you can taste excellent wine in many villages, but only one can boast not only vineyards but also an almond orchard.**

Every year in Hustopeče, almonds and vineyards come together for one day during the Almond and Wine Festival. At Hotel Amande, such a celebration can be enjoyed every day. For an exceptional gastronomic experience, visit the hotel restaurant, where traditional Moravian flavours are combined with modern culinary techniques. The menu features dishes made from local produce and seasonal ingredients, perfectly complemented by carefully selected wines from the region.

After a day of exploration, unwind in the Wine Wellness – a unique hotel wellness centre inspired by the beneficial effects of wine and grapevines. You can look forward to aromatherapy treatments, wine baths, or relaxation in a wine-infused steam room – all in an environment that perfectly immerses you in the Moravian atmosphere.



200



AV equipment, Wi-Fi, parking, wellness



Husova 8, 693 01 Hustopeče



[www.amandehotel.cz](http://www.amandehotel.cz)

More info: [Brno Convention Bureau](#)

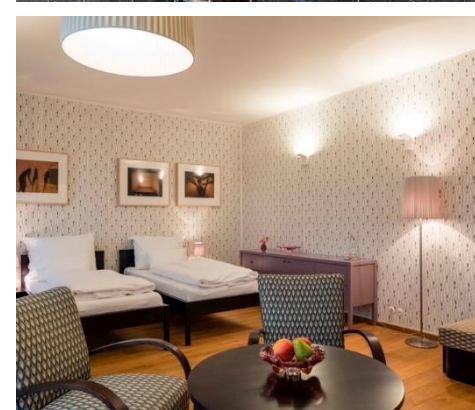


# Villa Hrušky

Villa Hrušky, located in the southernmost part of South Moravia, combines historical charm with modern luxury.

The villa's design blends original antique furniture with modern elements, creating an elegant atmosphere ideal for adult visitors seeking peace and relaxation. This adult-only concept ensures an entirely undisturbed stay, perfect for couples or small groups wanting to escape the hustle and bustle of everyday life.

The surrounding region is renowned for its rich folklore traditions and wine culture. You can visit local wine cellars, take part in grape harvest celebrations, or enjoy other traditional festivities. For active relaxation, you can rent bicycles or set out on a hike. Villa Hrušky is a perfect destination for those wishing to enjoy tranquillity, wine, and the beauty of the Moravian countryside, all in perfect harmony with history and modern comfort.



80



AV equipment, Wi-Fi, parking, swimming pool



U Zbrojnice 442, 691 56 Hrušky



[www.villahrusky.cz](http://www.villahrusky.cz)

More info: [Brno Convention Bureau](#)

# Kocanda Kravsko

Kocanda Kravsko is a beautiful hotel and relaxation destination located in the picturesque landscape of the Znojmo region.

The building has a fascinating industrial history – it originally served as a storage facility for ceramic moulds, which gives it a unique character that has been preserved even after extensive renovations. The interior of Kocanda combines industrial elements with modern design, creating an original atmosphere for guests seeking a place with a story. At Kocanda, you can enjoy comfortable accommodation in stylishly furnished rooms or apartments equipped with modern amenities. For larger events, the hotel offers catering services and flexible spaces for conferences, training sessions, or other social gatherings.

The surrounding area provides excellent opportunities for walking and cycling trips. In addition, you can visit the historic centre of Znojmo and the Podyjí National Park, both just a short distance from the hotel.



200



AV equipment, Wi-Fi, parking

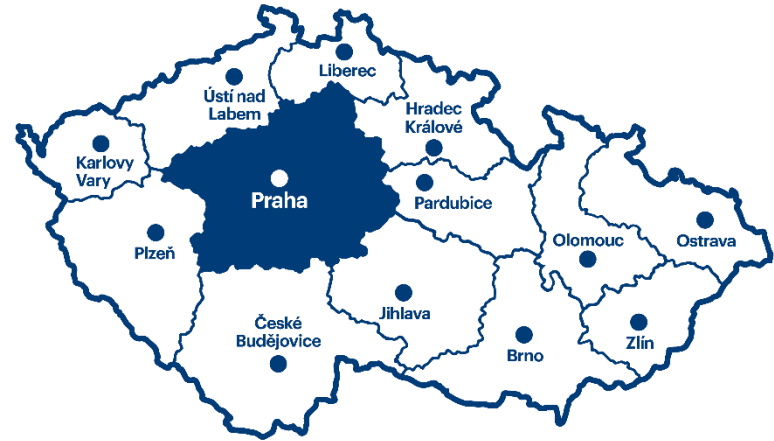


Kravsko 45, 671 51 Kravsko



[www.kocandakravsko.cz](http://www.kocandakravsko.cz)

More info: [Brno Convention Bureau](#)



Romantic venues

# Central Bohemia Region

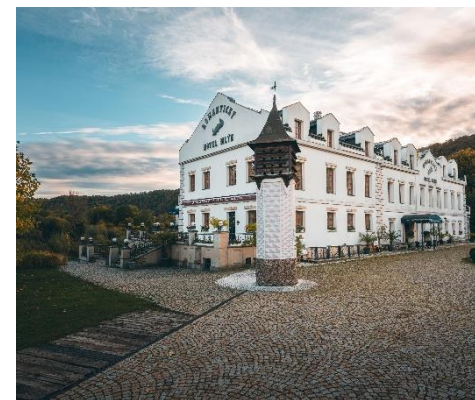


# Romantic hotel Mlýn Karlštejn

As the name suggests, the four-star Romantic Hotel Mlýn Karlštejn is the perfect venue for hosting romantic events. Thanks to its location on an island, it is literally surrounded by the Berounka River. The atmosphere is enhanced by breathtaking views of the landscape and the gentle flow of the Berounka River.

Romantic Hotel Mlýn Karlštejn offers guests complete comfort, professional service, and an exceptional gastronomic experience. Situated in the romantic setting of the Berounka River, it provides ideal conditions for outdoor catering.

The hotel features stylishly furnished rooms, dining in a restaurant with a summer terrace overlooking the river, fish specialities, homemade pastries, and vegetables and herbs from its own garden. Guests can also enjoy a relaxation centre with a sauna, whirlpool, and a small fitness area. All of this creates a unique opportunity for active rest and relaxation within easy reach of Prague.



Petrarca Hall with terrace – 60 persons, romantic island with party tent – 200 persons.



daylight, dimming, Wi-Fi, projector, screen, sound system, flipchart



Karlštejn 239, 267 18 Karlštejn



[www.hotelmlynkarlstejn.cz](http://www.hotelmlynkarlstejn.cz)

More info: [Central Bohemia Convention Bureau](#)

# Dobříš Chateau

The beauty of historic interiors, a unique French park, an English park, the option of accommodation in a four-star hotel, and a pleasant dining experience in a stylish restaurant all make Dobříš Chateau an irresistible destination.

With its incomparable fairy-tale charm, Dobříš Chateau is the perfect place for your wedding day or an all-day wedding celebration. It is a venue you will never forget and one you will wish to return to.

Our services include accommodation at the 4-star Chateau Hotel Dobříš, with a total capacity of 22 beds, including a romantic bridal suite.

Dobříš Chateau also offers several options for hosting your corporate event. You can rent the impressive Mirror Hall, the elegant Stables, or the enchanting French Park. These spaces are ideal for conferences, concerts, private events, or film productions.



Mirror Hall – 200 persons, accommodation – 10 double rooms and bridal suite



sound system, data projector, wi-fi, blackout, furniture



Dobříš Chateau, 263 01 Dobříš



[www.zamekdobris.cz](http://www.zamekdobris.cz)

More info: [Central Bohemia Convention Bureau](#)



# Mělník Chateau

The Renaissance chateau overlooking the confluence of the Elbe and Vltava rivers is deeply connected to winemaking and the traditions of the local region. Its interiors and wine cellars add charm and elegance to any event.

The romantic and majestic setting of the chateau is ideal for hosting corporate and social events (conferences, gala evenings, or incentive programmes combined with wine tastings). Among the highlights are the Small Blue Lounge with views of the Elbe and Vltava confluence, the Concert Hall, the St. George's Wine Bar with a private entrance, the Charles IV Hall in the chateau's cellars with its medieval atmosphere, and the Chateau Restaurant with a terrace. Each of these spaces has its own unique charm.

In the Chateau Restaurant, culinary artistry is paired with stunning views of the Elbe and Vltava rivers, complemented by the vineyards of St. Ludmila. The ambience of traditional Czech cuisine is inspired by seasonal local produce.

The restaurant not only offers excellent food but also a wide range of services for celebrations and various events. Wine lovers can enjoy tastings of exquisite Lobkowicz wines.

For many years, Mělník Chateau has been a reliable partner in hosting corporate and social events. By combining elegance with a professional approach, it guarantees an unforgettable experience.



Largest Concert Hall – maximum 200 persons



Wi-Fi, wheelchair accessible toilet



Svatováclavská 19/16, 276 01 Mělník 1



[www.lobkowicz-melnik.cz](http://www.lobkowicz-melnik.cz)

More info: [Central Bohemia Convention Bureau](#)



Mělník Chateau

# Liblice Chateau

Liblice Chateau serves as the conference centre of the Czech Academy of Sciences.

It offers the unique opportunity to stay in a chateau, with rooms furnished with original furniture from its former owners. The total capacity of 53 rooms comprises 20 historic rooms located directly in the chateau and 32 rooms in its adjoining wings. All rooms are equipped with en-suite facilities, a fridge with a minibar, LCD TV, a safe, a hairdryer, and internet access.

In the chateau restaurant, which has a capacity of 80 guests, you can savour European and Czech cuisine, while your body and mind can relax in the chateau wellness centre. Enjoy the chateau's tranquillity and recharge your energy.

The combination of the chateau's Baroque architecture with modern conference facilities equipped with state-of-the-art technology creates a truly unique venue, meeting all the requirements for hosting conferences, seminars, and educational events at an international level. Liblice Chateau is also the perfect setting for hosting wedding celebrations, ensuring unforgettable memories.



Accommodation: 53 rooms / 110 beds; Conference: 112 persons in classroom-style seating; Restaurant:80 seats



6 equipped conference rooms, chateau wellness, massages, forest mind trail, castle restaurant



Liblice 61, 277 32 Byšice



[www.zamek-liblice.cz](http://www.zamek-liblice.cz)

More info: [Central Bohemia Convention Bureau](#)

# Vletice Farmstead

In the valley of the Brzina stream, between Krásná Hora nad Vltavou and Vysoký Chlumeč near Sedlčany, in the land of stones, you will find Vletice Farmstead. Experience the unique atmosphere and Genius Loci of this more than 100-year-old farmstead, located in the Toulava tourist region.

The farmstead is the perfect venue for team-building events, training sessions, parties, and even fairy-tale weddings. Start your day with a swim in the stone pool, enjoy the whirlpool, sauna, or make use of the children's playroom.

The facilities include a barn with a dance floor, a fireplace room, and a dining room with a bar. Outdoors, you can pour yourself lemonade from the self-service outdoor tap, rent an e-bike for a day trip, and in the evening, relax by the firepit or under the pergola.



Accommodation: maximum 42 beds; Barn: approximately 100 persons; Fireplace room: approximately 20 persons; Dining room with bar: approximately 40 persons; Pergola: approximately 70 persons



projector, flipchart

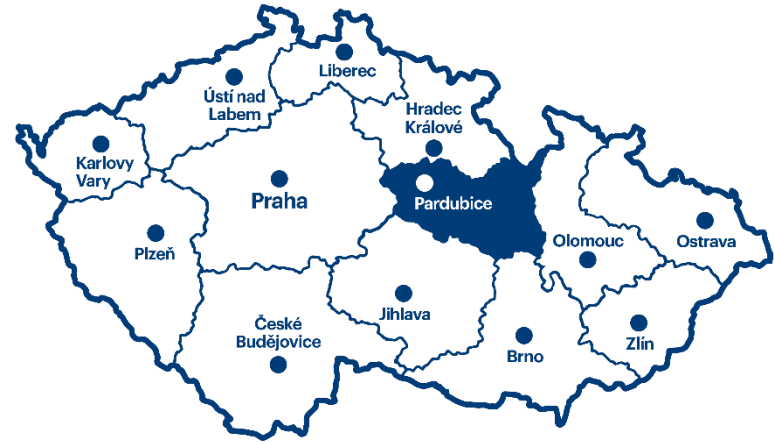


Vletice 11, 262 56 Krásná Hora nad Vltavou



[www.statekvletice.cz](http://www.statekvletice.cz)

More info: [Central Bohemia Convention Bureau](#)



Romantic venues

# Pardubice Region

# Hotel Poutní dům (Pilgrim House)

Hotel Poutní dům is a charming destination on the border of the Orlické Mountains and Králický Sněžník, ideal for relaxation and various social events.

This newly renovated hotel offers comfortable accommodation, excellent cuisine in the St. Joseph's Restaurant, and modern facilities, including conference halls. Thanks to its location near the pilgrimage site Hora Matky Boží and the beautiful surrounding landscape, it is a great choice for tourists and businesses alike. For corporate events, guests can take advantage of the glass terrace with a stunning view of Králický Sněžník. Nature lovers will appreciate the proximity of mountains, cycling routes, and hiking trails. The hotel is also an ideal base for trips into the surrounding area, whether for culture, history, or sport. Stop by and enjoy the tranquility, nature, and hospitality that this unique place has to offer.



North Hall – 65 persons, South Hall – 50 persons



accommodation (80 beds), parking, projector, flipchart, parking, outdoor playground



Kopeček 2, 561 69 Králíky



[www.poutnidum.com](http://www.poutnidum.com)

More info: [East Bohemia Convention Bureau](#)

# Mysterious Svojanov Castle


Have you ever slept in a castle? You won't easily forget your event at Svojanov Castle. Whether you're holding meetings in a medieval hall or tackling challenges during a team-building game, Svojanov Castle offers its visitors a unique medieval atmosphere and is often referred to as the "villa of Czech queens."

The conference hall, preserved in its authentic 15th–17th-century state, is located on the ground floor of the Guardsmen's House and comes equipped with Wi-Fi. The complex also provides a secure car park. Accommodation for guests can be arranged in the castle guesthouse, which has a capacity of 27 beds. A bespoke team-building programme can be organised by the Honorata fencing group. The outdoor game includes activities tailored to your event's focus – whether it's team cohesion, competitiveness, fun, or adrenaline.



 hall in the house of armourers 60 persons, hunting lounge 20 persons

 accommodation (27 beds), Wi-Fi, parking

 Svojanov Castle, 569 73 Svojanov 1

 [www.svojanov.cz](http://www.svojanov.cz)

More info: [East Bohemia Convention Bureau](#)



# Kramářova Chata on Suchý Vrch hill

Kramářova Chata on Suchý Vrch (995 m above sea level) is the ideal place for corporate events, team-building activities, and relaxation. The surrounding mountain environment will undoubtedly help you escape the hustle and bustle of city life.

In winter, the Suchý Vrch area impresses visitors with its proximity to three ski resorts and dozens of kilometres of well-maintained cross-country trails. In summer, it's perfect for cycling and hiking trips, for example, to the Bouda fortress or the Kralický fortification area. Directly from the lodge, you can climb to the observation tower, which offers stunning views of the Orlické and Bystřické Mountains, Králický Sněžník, and the valley near Králíky. In addition to its beautiful surroundings, the lodge provides facilities for meetings in two lounges, accommodation, and a restaurant serving traditional Czech and European cuisine with a modern twist.



Lounge 1: 40 persons, Lounge 2: 20 persons



accommodation (40 beds), Wi-Fi, parking



Orlíčky 186, Orlíčky 561 551



[www.suchak.cz](http://www.suchak.cz)

More info: [East Bohemia Convention Bureau](#)

# The Landscape of Noble Horses in Kladruby nad Labem

The romantic landscape surrounding the National Stud Farm in Kladruby nad Labem will enchant any nature lover.

The Kladruby Stud Farm is one of the oldest in the world and the home of the oldest original Czech horse breed – the Kladruber horse. In addition to the stud farm, you will also find a romantic chateau here, which was once visited by Empress Sissi. The stud farm complex is an excellent venue for hosting corporate events. Looking for a supporting programme? Enjoy a tour of the stud farm, including the stables and carriage house, or book a performance featuring the Kladruber horses.



Imperial Inn Hall: 110 persons; Imperial Dining Room at the Chateau: 30 persons; Multifunctional Hall at the Chateau: 30 persons; Meeting Room at the Chateau: 25 persons



parking, restaurant, Wi-Fi



Kladruby nad Labem



[www.nhkladruby.cz](http://www.nhkladruby.cz)

More info: [East Bohemia Convention Bureau](#)

# Litomyšl Chateau Hill

Is there a more romantic setting than a castle or chateau? In Litomyšl, you can host your event right on the Chateau Hill.

Chateau Hill in Litomyšl will captivate not only history lovers. This location, with its unique historical atmosphere, offers everything you can imagine – whether you are seeking an extraordinary venue for a conference or wish to provide your partners or clients with an unforgettable experience.

A walk through Litomyšl can easily be compared to a tour of an open-air gallery. Visit the chateau cellars, where you'll find sculptures by Olbram Zoubek, and enjoy a tasting of exceptional wines. Don't miss the Church of the Finding of the Holy Cross, whose spaces can be rented for accompanying programmes, such as hosting a short music performance or a smaller organ concert. You can then explore the exhibitions inside the church and visit the Angel's Lookout, offering breathtaking views of the town and chateau. 4 large halls (largest for 500 persons), 3 smaller halls (100–120 persons), 4 classrooms (largest for 50 persons).



4 large halls (largest for 500 persons), 3 smaller halls (100-120 persons), 4 classrooms (largest for 50 persons)



internet, wheelchair access, mobile stage and acoustic ceiling in the Jizárna hall, air conditioning, projector with screen, sound system

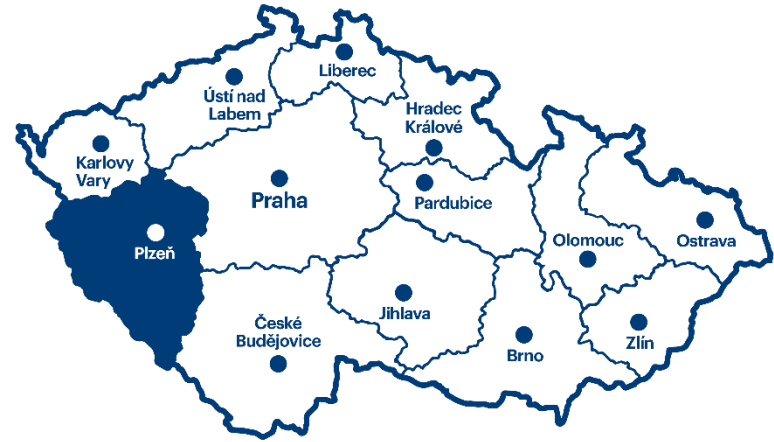


Jiráskova 133, Litomyšl 570 01



[www.zamecke-navrsi.cz](http://www.zamecke-navrsi.cz)

More info: [East Bohemia Convention Bureau](#)



Romantic venues

# Pilsen Region

# Bašta Sušice Apartments

An apartment complex in sensitively restored buildings located in the centre of the picturesque town of Sušice – an ideal starting point for trips into the Šumava Mountains.

The uniqueness of this location lies in its combination of historical charm with modern luxury. The primary aim is to create a peaceful environment that evokes the magic of home. The well-appointed apartments, situated in a carefully renovated complex in Sušice's former Jewish quarter, provide a haven from the everyday hustle, inviting you to enjoy romantic moments or spend time engaging in active relaxation. A particular highlight is the private wellness area, featuring traditional Nordic-style relaxation with a Finnish sauna and unique beer baths in the former Jewish mikveh. Guests can also enjoy the exclusive cigar club with a piano bar, which is entirely private – always reserved for closed groups. The atmosphere and refreshments can be tailored to your preferences.

The surrounding area offers picturesque nature and historic landmarks, ideal for active rest. Experience providers in the vicinity arrange a variety of team and individual activities. You can even enjoy a flight over Šumava, discovering its beauty from a bird's-eye perspective. Nearby restaurants invite you to indulge in gastronomic delights, and all key attractions can be reached within minutes – on foot, by bike, or on roller skates. You can head straight in your swimwear to the Luh natural spa or the popular, modern indoor swimming pool. In winter, cross-country ski trails are within easy reach. Bašta Sušice Apartments is the perfect choice for an unforgettable stay at the foot of the Šumava Mountains.



Capacity: 39 beds; largest hall: 20 guests



wi-fi, daylight in the hall, flipchart



Bašta 56; 342 01 Sušice



[www.apartmanybasta.cz](http://www.apartmanybasta.cz)

More info: [Pilsen Region](#)



# Vogelsang Residence

## Romance in the Heart of the Šumava National Park

Residence Vogelsang is located in a stunning forest setting within the Šumava National Park, offering views of Kašperk Castle and the village of Červená. It lies approximately 6 km south of Kašperské Hory. With its location amidst nature yet within easy reach of numerous historical landmarks, sporting opportunities, and cultural attractions, Residence Vogelsang provides ideal conditions for hosting events or enjoying leisure time at any time of the year. Thanks to its facilities and services, everyone can savour the relaxing atmosphere of this romantic spot, no matter the weather. The wellness centre, featuring breathtaking views of the unique Šumava panorama, offers pleasant relaxation with soothing music, stress relief, and renewed energy. A gym invites you to stretch on modern fitness equipment or enjoy a light workout. The communal room with billiards and barbecues on the covered terrace, offering views of the Šumava landscape and Kašperk Castle on the horizon, will spark entertainment and strengthen group bonds.

The complex also includes St. Barbara's Chapel, which can be used for weddings or exhibitions by prior arrangement. The chapel was declared a cultural monument in October 2018.



Capacity: 30–40 persons in the hall



LCD TV, projector, flipchart



Podlesi No. 1; 341 92 Kašperské Hory



[www.residencevogelsang.cz](http://www.residencevogelsang.cz)

More info: [Pilsen Region](#)

# Hrádek Chateau near Sušice

A chateau hotel in the picturesque Pošumaví countryside.

For those wishing to feel like they've stepped into a fairy tale, Hrádek Chateau is the perfect destination. Guests will enjoy a pleasant atmosphere and attentive, professional staff who are always happy to take care of everyone's needs. The chateau rooms are tastefully furnished with respect for their historical origins. Each room reflects a unique style, including Louis XV, English Chippendale, Tudor Renaissance, French Rococo, and a Country Style for those who prefer simplicity. The chateau restaurant combines the elegance of a historic setting with modern comfort. Additional features include a modern wellness centre with a pool and saunas, a park, and a working garden with an Empire-style orangery. The Baroque Chapel of St. Walburga has also been preserved to this day.

Thanks to its historically uplifting atmosphere, visitors to Hrádek Chateau near Sušice can leave everyday worries behind, relax, and recharge.



5 halls, largest hall – 70 persons.



wi-fi; projector, screen/screen, blackout or daylight option



Hrádek 1, 342 01 Sušice



[www.zamekhradek.cz](http://www.zamekhradek.cz)

More info: [Pilsen Region](#)

# Bohemian Forest Resort

**Breathtaking tranquillity in the heart of the Bohemian Forest.**

The aim is to offer first-class comfort in accommodation, gastronomy, and facilities for team-building and conferences, while maintaining the utmost harmony with nature thanks to the natural beauty of the Bohemian Forest.

The area surrounding the resort provides countless walking and hiking trails. Simply put on comfortable shoes, or grab your trekking poles, and set out to discover the endless beauty of this location. The Bohemian Forest and the Upper Palatinate Forest are also perfect for cycling. You will find up to 270 km of cycle paths here. Even in winter, there's no shortage of activities in this rugged yet captivating landscape. There's always something to explore on the cross-country ski trails, or you can enjoy a great day of skiing on the renowned slopes nearby. The resort's underground area is home to a wellness zone and the Kotelna Bar, which offers wine tastings, including the full portfolio of De Venoge Champagne.



2 halls – up to 70 persons; 140 beds



wi-fi, projector, screen, flipchart, sound system, daylight in the hall



Železná 37; 34525 Bělá nad Radbuzou



[www.resortceskyles.cz](http://www.resortceskyles.cz)

More info: [Pilsen Region](#)





# Hotel Annín

**Romance in the mountain air with unlimited wellness and fine dining.**

You don't need magic to stop time – just visit Hotel Annín. The enchanting Šumava landscape, set around the crystal-clear Otava River, creates the perfect setting, complemented by the hotel's wellness centre with its unique views of forest hideaways. Every morning, a rich and delicious breakfast is prepared, and a bottle of wine awaits you in your room.

The modern rooms feature comfortable double beds, beautiful bathrooms, and all the necessary amenities. The romantic atmosphere and comfort are enhanced by the option to relax on the balcony or take in the stunning views of the surrounding countryside, which never fail to inspire. After a full day of hiking or exploring the natural treasures of the Šumava region – or simply as a chance to unwind and recharge – the modern wellness centre offers unlimited access throughout your stay. Guests will be enchanted by the swimming pool, whirlpool, and steam room, as well as the tempting option to enjoy relaxing massages. For competitive spirits and additional entertainment, the hotel also features a bowling alley. Just steps from the hotel, outdoor adventures await – from walking and cycling trails winding through the beautiful landscape to water sports on the local rivers. For those preferring a gentler pace, the surrounding nature provides peaceful walks through forests and parks, where the beauty of the natural world can be admired in tranquillity.



Meeting room – up to 50 persons



wi-fi, modern conference and presentation technology



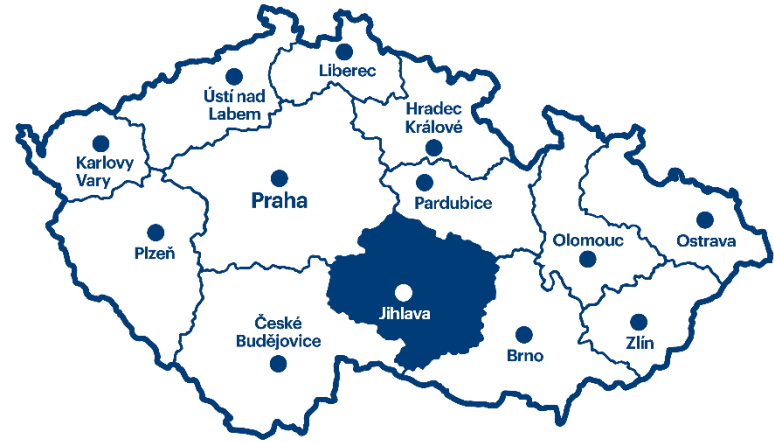
Annín 1; 342 01 Dlouhá Ves



[www.hotelannin.cz](http://www.hotelannin.cz)

More info: [Pilsen Region](#)





Romantic venues

# Vysočina Region

# Žďár nad Sázavou Chateau

Are you looking for a venue that combines a romantic atmosphere with modern facilities? Žďár nad Sázavou Chateau will enchant you with its beautiful interiors, picturesque surroundings, and spaces steeped in history.

The chateau's interiors and romantic nooks, combined with the inspiring atmosphere of the surrounding landscape, create the ideal setting not only for personal moments but also for corporate events. The chateau offers representative spaces for conferences, training sessions, or team-building activities, which can be combined with a walk to the iconic Zelená Hora (Green Mountain). Newly renovated rooms, awarded for their design, will impress and delight you.

Next year, the chateau will unveil an exciting addition – the Creative Cultural Centre Vysočina, featuring new, generous spaces for meetings, culture, and the arts. The convent building of the former Cistercian monastery will gain a new function while retaining its unique atmosphere.

Create an unforgettable experience at a place where romance and professionalism go hand in hand.



5 halls (maximum capacity of the largest hall: 400 persons)



complete AV equipment, halls suitable for music and artistic activities



Žďár nad Sázavou



[www.zamekzdar.cz](http://www.zamekzdar.cz)

More info: [Vysočina Region Convention Bureau](#)



# Just Jimramov

Are you looking for a venue that combines rural charm with modern comfort? Just Jimramov welcomes you to a unique complex where history blends seamlessly with sustainable architecture. Situated in the Žďárské vrchy Protected Landscape Area, it offers the perfect environment for privacy and inspiration.

Just Jimramov is an award-winning destination filled with innovation, a project of sustainable construction that embraces both traditional craftsmanship and modern technologies. Here, you'll enjoy exceptional gastronomy, which tastes even better in this extraordinary setting.

With its capacity, it is an ideal choice for management meetings, strategic workshops, and smaller corporate events. Stylish conference facilities, the option to unwind in the wellness centre, and a peaceful atmosphere ensure your event will be both efficient and enjoyable. Discover a place where history, nature, and professionalism meet – for experiences you'll never forget.



28 persons (+ possibility of extension by 20 persons in summer season - outdoor space), 6 apartments (14 - 24 persons)



basic AV equipment (sound system, data projector, flip chart, etc.)



Jimramov



[www.justjimramov.cz](http://www.justjimramov.cz)

More info: [Vysočina Region Convention Bureau](#)



# Světlá nad Sázavou Chateau

Discover a place where history meets elegance, and the tranquil setting of Sázava River creates an unforgettable atmosphere. Světlá nad Sázavou Chateau is the ideal choice for those seeking a venue with a romantic soul and practical functionality.

The chateau's spaces offer more than just charming surroundings – its stylish interiors and adjoining gardens are perfect for hosting business meetings, strategic discussions, or creative workshops. The combination of chateau sophistication with the relaxed atmosphere of the Posázaví countryside guarantees both inspiration and an enjoyable experience.

Whether you are planning a business meeting or looking for a venue for special moments, Světlá nad Sázavou Chateau offers the perfect blend of romance and functionality. Make your meeting an unforgettable experience in a setting that will captivate you with its unique charm.



100 persons (largest hall), 10 castle rooms, café



basic AV equipment (sound system, data projector, flip chart, etc.)



Světlá nad Sázavou



[www.zameksvetla.cz](http://www.zameksvetla.cz)

More info: [Vysočina Region Convention Bureau](#)

# Panský dvůr Telč (Manor Telč)

In the heart of one of the most romantic towns in the Czech Republic – the fairy-tale town of Telč – you will find Panský dvůr, a venue that surprises with its wide range of services and extensive grounds. The proximity of Telč Chateau, its picturesque square, and the chateau park gives this complex a unique character, appreciated not only by history lovers but also by companies looking for an extraordinary setting for their events.

Panský dvůr offers an attractive combination of representative spaces and opportunities for informal entertainment – featuring its own brewery, climbing wall, and multi-purpose facilities for training sessions, conferences, or team-building activities. All of this is within reach of the magical atmosphere of the UNESCO-listed centre and chateau.

Combine work obligations with a fairy-tale setting and discover how inspiring the fusion of history, modern comfort, and an enchanting atmosphere can be. Panský dvůr Telč is a place where meetings take on a new dimension.



5 halls (max. capacity 200 persons), 36 beds



Complete AV equipment (sound system, data projector, flip chart, etc.)



Telč



[www.panskydvurtelc.cz](http://www.panskydvurtelc.cz)

More info: [Vysočina Region Convention Bureau](#)



# Hotel Kouty

Are you looking for a place where you can immerse yourself in the silence of the forest and surround yourself with the beauty of nature? Hotel Kouty welcomes you with the scent of wood, inspiring views of lush greenery, and 100,000 square metres of absolute tranquillity. Cosy, romantic cabins nestled among the trees lend this place its unique charm.

Hotel Kouty is ideal not only for moments of relaxation but also for corporate events seeking something out of the ordinary. The forest wellness centre, sauna treatments, and a wide range of supporting programmes will turn your business event into an unforgettable experience. Whether you are planning team-building activities, training sessions, or strategic meetings, the natural backdrop of this unique venue will fill you with inspiration and energy.

Hotel Kouty is a place where romance, tranquillity, and modern facilities intertwine – where every moment becomes truly exceptional.



100 persons (capacity of the largest hall), 53 beds



Complete AV equipment (sound system, data projector, flip chart, etc.)

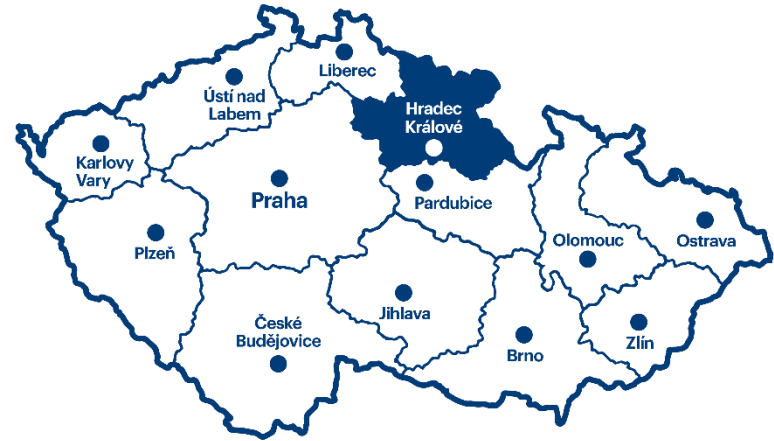


Kouty (Světlá nad Sázavou)



[www.hotelkouty.cz](http://www.hotelkouty.cz)

More info: [Vysočina Region Convention Bureau](#)



Romantic venues

# Hradec Králové Region



# Hotel Rajská zahrada

Immerse yourself in the serene atmosphere and the views of the picturesque valley and hotel gardens.

The wellness hotel boasts a unique location on a cliff with stunning views of Nové Město nad Metují. It offers modern fitness facilities, a sauna, whirlpools, massages, and relaxation baths. For corporate events, there is a conference lounge for up to 40 persons, complemented by a charming hotel garden and a renowned restaurant.



40 persons in the hall



internet Wi-Fi, data projector, projection screen, flip-chart, air conditioning



Nové Město nad Metují



[www.hotelrajskazahrada.cz](http://www.hotelrajskazahrada.cz)

More info: [Hradec Králové Region Convention Bureau](#)

# Hotel U Beránka

Hotel U Beránka will impress you with its magnificent hall, ready to adapt to any of your events.

Located in the peaceful historic centre of Náchod, the hotel combines Art Nouveau elegance with modern comfort. It offers accommodation in 52 rooms, three suites, and a luxurious presidential suite. Guests will appreciate the high-quality gastronomy in the hotel restaurant, conference facilities, and a wide range of services. Thanks to its location, the hotel is an ideal starting point for trips to the Adršpach-Teplice Rocks, Ratibořice, or the Božena Němcová Museum. It is also a convenient destination for meetings with Polish partners. The hotel is also home to the municipal theatre, which hosts the most significant cultural events in the region and is available for your use as well.



5 different halls with a total capacity of 370 persons + a large hall with a capacity of 499 persons



internet Wi-Fi, data projector, projection screen, flip-chart, sound system, air conditioning



Náchod



[www.hotel-beranek.com](http://www.hotel-beranek.com)


More info: [Hradec Králové Region Convention Bureau](#)

# Nový zámek Kostelec nad Orlicí

Experience romance in a place where history comes alive in harmony with modern culture.

The New Chateau in Kostelec nad Orlicí is an elegant Empire-style building from the early 19th century, surrounded by a beautiful English park. The chateau serves as the family residence of the Kinský family, who carefully manage and open it to visitors. It offers tours of the historic interiors, a gallery of modern art, and occasional cultural events. In the pleasant chateau café, you can enjoy homemade specialities while admiring views of the park. Thanks to its atmosphere and facilities, the chateau is also ideal for social and corporate events.



 2 halls with a capacity of 150 persons

 Wi-Fi

 Kostelec nad Orlicí

 [www.zamekkostelecno.cz](http://www.zamekkostelecno.cz)

More info: [Hradec Králové Region Convention Bureau](#)

# Častolovice Chateau

A Renaissance chateau with an English park and a mini-zoo.

Častolovice Chateau is a Renaissance gem surrounded by an extensive park and a game reserve, home to fallow deer and other animals. The chateau interiors offer tours filled with history and art, including unique collections of paintings and furniture. The complex also features a chateau café with a terrace, where you can enjoy refreshments while taking in views of the park. The chateau hosts a variety of cultural and social events, from concerts to weddings. Thanks to its picturesque atmosphere and the careful stewardship of the Sternberg family, the chateau is a popular destination for lovers of history and romantic getaways.



4 halls with a capacity of 445 persons



internet Wi-Fi, flip-chart, lighting technology



Častolovice



[www.zamek-castolovice.cz](http://www.zamek-castolovice.cz)

More info: [Hradec Králové Region Convention Bureau](#)

# Hotel Veba

The First Republic villa, built in 1927, will enchant you with its unique romantic atmosphere.

Hotel VEBA in Broumov is an elegant hotel located in a peaceful part of the town, surrounded by an extensive park. It offers stylish accommodation in a historic building featuring modern touches, combining comfort with the charm of the past. The hotel includes a wellness centre with a pool, saunas, and relaxation services – perfect for unwinding after a demanding day. The hotel restaurant focuses on top-class gastronomy, offering specialities made from local ingredients. Thanks to its facilities, the hotel is ideal for corporate events, family celebrations, and romantic stays close to the Broumovské stěny (Broumov Walls).



a hall for 45 persons and two classrooms with a capacity of 50 persons



internet Wi-Fi, data projector, projection screen, flip-chart, sound system, air conditioning

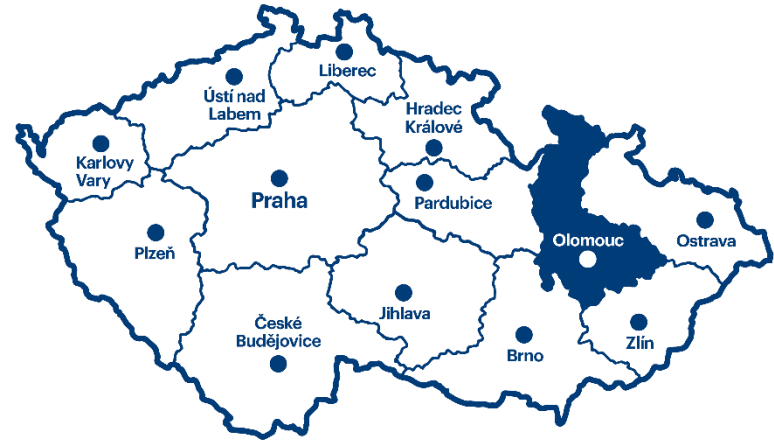


Broumov



[www.hotelveba.cz](http://www.hotelveba.cz)

More info: [Hradec Králové Region Convention Bureau](#)



Romantic venues

# Olomouc Region

# Čechy pod Kosířem – Chateau Orangery

The orangery is part of the Čechy pod Kosířem Chateau. The adjoining chateau park, covering an area of 21.5 hectares, is one of the most valuable examples of romantic landscape design in the Czech Republic.

The pseudo-Gothic orangery from the mid-19th century, designed by the renowned architect Vojtěch Ignác Ullmann and with a façade featuring work by the painter Josef Mánes – a frequent guest of the Sylva-Taroucca family – is a stunning, authentic venue available for private and corporate events. The parterre in front of the orangery is a simple yet elegant space for social events held within the orangery, adorned with typical ornamental plants. The orangery and parterre seamlessly connect to the beautiful chateau park, creating an exquisite setting for any occasion.



2 halls, capacity of 140 persons



according to customer's request



Mánesova 1, 798 58 Čechy pod Kosířem



[www.zamekcechy.cz](http://www.zamekcechy.cz)

More info: [Central Moravia & Jeseníky Convention Bureau](#)

# Náš Mlýn (Our Mill)

Náš Mlýn is a place where nature and architecture come together in harmony.

In the main building and adjoining spaces, you can host a wedding, workshop, team-building event, or any occasion tailored to your wishes. Náš Mlýn features generous indoor and outdoor spaces that can accommodate groups of up to 80 persons. Guests can stay in 7 wooden cabins located in the orchard, each with a double bed. The cabins are Scandinavian-inspired, designed to bring nature a little closer to persons.

The mill has a unique atmosphere. It is a place designed for persons with passion – those who love unconventional interiors and seek experiences surrounded by nature.



1 hall, 80 persons



complete sound system, lighting, limited Wi-Fi



Ochoz 18, Ochoz u Konice



[www.nasmlyn.com](http://www.nasmlyn.com)

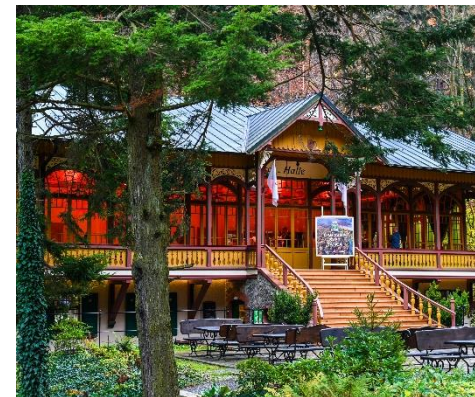
More info: [Central Moravia & Jeseníky Convention Bureau](#)



# Dance hall - Račí Údolí

The Art Nouveau Tančírna was built by Wrocław Bishop Cardinal Georg (Jiří) Kopp between 1906 and 1907. Today, this charming building serves as a romantic and poetic venue for hire, featuring a main hall, a smaller lounge, a café, and an adjoining park. Nestled in the stunning natural scenery of the Rychlebské Mountains, the location itself boasts an atmosphere that will captivate you.

The main space of the Tančírna is the large “dance” hall, ideal for wedding receptions and ceremonies, anniversary and birthday celebrations, corporate events, workshops, dance and other courses, dances, balls, and similar occasions. The lower part of the building houses a lounge (perfect for smaller celebrations or creative workshops) and a café.



 2 halls, max 100 persons

 tables, chairs, podium, sound system, according to the customer's wishes

 Javorník 790 70

 [www.tancirna.rychleby.cz](http://www.tancirna.rychleby.cz)

More info: [Central Moravia & Jeseníky Convention Bureau](#)

# Lichtenstein Barn

A century-old stone structure, recently renovated, now offers accommodation with a beautiful and romantic atmosphere near Olomouc, in the village of Bělkovice-Lašťany.

Lichtenstein Barn is perfect for clients seeking an escape from the city, peace, tranquillity, and the best company – nature. When the owners bought the abandoned forester’s lodge and the adjoining barn, many advised them to tear it down and build something new. They refused to give in to this “cheap” idea and instead created an amazing place, which was awarded “Amazing Place” in the Apartments category in 2022. The building exudes a beautiful romantic atmosphere and offers simple yet magical experiences: armchairs and benches with blankets, a swing for the bride, a rustic arch of young branches and wildflowers, picnic blankets, candles, and hundreds of twinkling lights hanging in century-old apple trees. The property also includes wellness facilities, such as a sauna and massages.

At Lichtenstein Barn, you’ll find a lovely setting that can accommodate around 30 guests, for example, at a wedding.



max. 30 persons



according to customer's request



Lašťany 349, 783 15 Bělkovice - Lašťany



[www.lichtensteinkastodola.cz](http://www.lichtensteinkastodola.cz)

More info: [Central Moravia & Jeseníky Convention Bureau](#)



# Kunzov Castle


Antonín Kunz from Hranice had Kunzov Castle built in a romantic style at the beginning of the 20th century as his summer residence. Located approximately 6 kilometres north of Hranice, it has been listed as a cultural monument since 2007.

The unique feature of this property is its stylisation of an industrialist's residential villa into an aristocratic medieval manor. The castle takes the form of a hexagonal complex, surrounded by high stone walls with Gothic arches and round towers.

Accommodation is available in cosy apartments as well as in the unconventional "watchtowers". Guests can also enjoy the charming tavern, carved into the rock, which is an exact replica of the original castle tavern. The property is complemented by a wellness zone featuring a sauna, whirlpool, massages, and an outdoor spa.

The venue is ideal for corporate, private, and individual events, accommodating up to 160 guests, who will be treated with the utmost care and pampered like true lords of the castle.

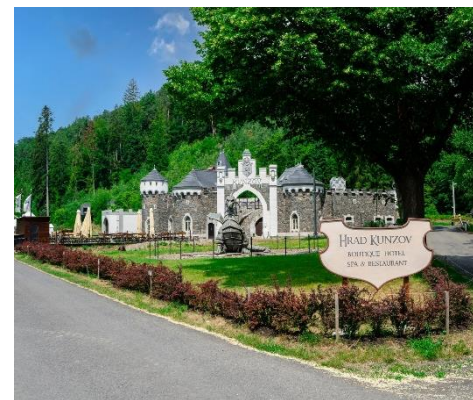
 2 halls, up to 160 persons

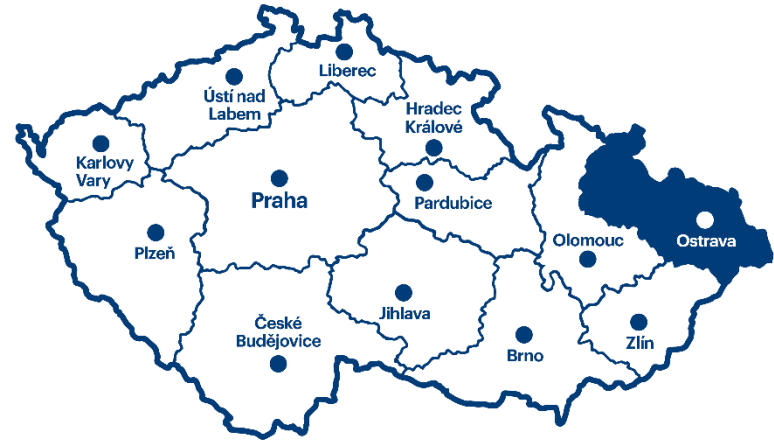
 according to customer's request

 Radíkov 1, 753 01 Radíkov

 [www.kunzov.cz](http://www.kunzov.cz)

More info: [Central Moravia & Jeseníky Convention Bureau](#)





Romantic venues

# Moravian-Silesian Region

# Chateau restaurant U Dobré hraběnky

We invite you to host your event in a place overflowing with romance. Plan your corporate events with traditional Czech cuisine in the welcoming, historic setting of Kunín Chateau.

The chateau's spaces bring a unique charm and an air of distinction to corporate gatherings. The U Dobré Hraběnky Restaurant offers a venue for your events with a capacity of 30–50 persons, depending on table arrangements.

It is ideal for company dinners, informal meetings over great food, or team-building activities, which can include outdoor fun followed by meals in the restaurant's inviting setting.

Enhance your event with a game of skittles in the chateau's bowling alley or a guided tour of the chateau's beautiful interiors.

The chateau complex is fully accessible for guests with reduced mobility.



1 hall, up to 50 persons - depending on the style of the event



audio/visual technology as required



U Dobré hraběnky, Kunín 1, 742 53



[www.dobrahrabenka.cz](http://www.dobrahrabenka.cz)

More info: [Ostrava Convention Bureau](#)

# A wine cellar in Ostrava?!

Discover the wine underground beneath the centre of Ostrava – an unexpected venue with a hint of folklore and the aroma of wine: the Ostrava Wine Cellar.

The underground cellar consists not only of storage spaces and boxes for preserving your own bottles of wine but also serves as a unique venue for your events.

The large hall has a capacity of 80–100 persons, while the smaller hall accommodates up to 40 persons. Additionally, the Upper Restaurant, complete with a fireplace and its own terrace, is available.

Tailored catering for your events is a given, as are wine tastings.

This unique wine cellar in the heart of Ostrava, with its upper restaurant and smaller lounge, offers a total capacity of up to 150 persons – an ideal choice for your next event in Ostrava.



max. capacity 150 persons in the underground, 2 different spaces (100, 40), upper restaurant 40 persons



ad hoc on request



Ostrava



[www.sklepostrawina.cz](http://www.sklepostrawina.cz)

More info: [Ostrava Convention Bureau](#)

# Třebovice mill

Unique Old-Czech-style spaces for corporate events with a touch of romance.

Host your corporate meeting at the charming Třebovice Mill, where comfortable accommodation meets a wide range of incentives and traditional gastronomy.

There are 3 private rooms for your events:

- Cellar for 2 - 15 persons
- Lounge for 15 - 40 persons
- Barn for 40 - 120 persons

The mill is located outside the centre of Ostrava, close to the Opava River and the Třebovice Park.



3 halls (15, 40, 120)



audio-visual equipment, others on request



Na Heleně 5004/2, 722 00 Ostrava-Třebovice



[www.trebovickymlyn.cz](http://www.trebovickymlyn.cz)

More info: [Ostrava Convention Bureau](#)

# U Holubů

**Elegant surroundings, breathtaking nature, and exceptional service...**

The dedicated team at Hotel U Holubů prides itself on aesthetics in harmony with nature, a family atmosphere, and perfect service. The hotel is located in a peaceful setting within the Beskydy Mountains. Available facilities:

The hotel Meeting Room, with a capacity for 25 persons, provides the ideal space to elevate any corporate event.

For larger occasions, the Main Hall accommodates up to 80 persons.

The hotel's modern facilities, flexible layout, and creative interior design meet all the requirements for team-building events, conferences, training sessions, or seminars.

The hotel owners focus on creating perfect experiences for both corporate and family events, with tailored packages always prepared to meet your specific needs.



winter in-door version: 1056 persons, in summer available terrace and "meadow" for 10 persons



audio-visual equipment, others on request



Hotel&Garden U Holubů, Čeladná 808, 739 12 Čeladná



[www.uholubu.com](http://www.uholubu.com)

More info: [Ostrava Convention Bureau](#)





# Creative events in chateau spaces

You'll gain a new experience, perspective, and outlook far better in the enchanting, creative setting of a chateau and its park than in a conference room in the middle of the city. Discover the perfect venue for your events at Jeseník nad Odrou Chateau.

For corporate meetings, the chateau offers several spaces:

1. Restaurant with a capacity of up to 48 persons
2. Hunting Lodge with a capacity of 20 persons
3. Small Lounge for 10 persons, which can be connected to the Hunting Lodge
4. Foyer for 14 guests

Thanks to the extraordinary chateau environment, your event will become a unique and memorable experience for all participants. In cooperation with carefully selected suppliers, Jeseník nad Odrou Chateau can also provide additional supporting services tailored to your needs.



4 halls, total capacity of 92 persons



any equipment on request



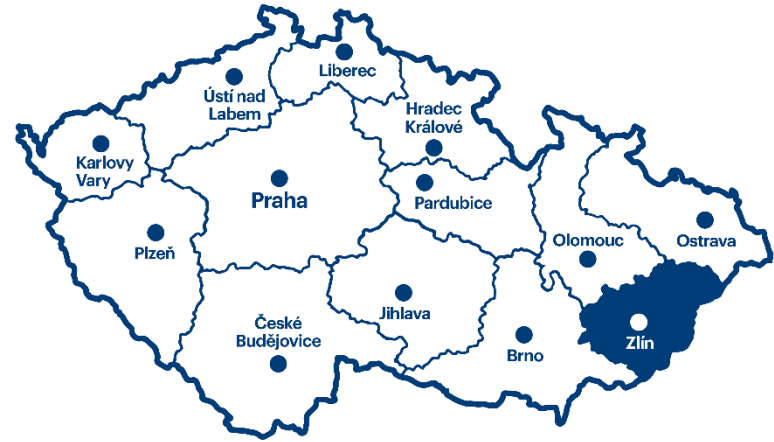
Jeseník nad Odrou Castle, Jeseník nad Odrou 1



[www.zamekjesenik.com](http://www.zamekjesenik.com)

More info: [Ostrava Convention Bureau](#)





Romantic venues

# Zlín Region

# Hotel Kopanice

Discover the charm of the White Carpathians and enjoy a romantic getaway or corporate event at Hotel Kopanice. This unique hotel, nestled in peaceful and picturesque surroundings, offers unforgettable views of the landscape that will captivate you with every glance out the window.

Hotel Kopanice is the perfect venue not only for romantic moments for two but also for corporate clients. It features a modern, well-equipped conference room with a capacity of up to 60 persons, filled with natural daylight thanks to its large windows. The hotel provides full technical facilities and professional services to ensure your training sessions, seminars, or conferences run seamlessly in an inspiring environment.

After a demanding day, you can unwind with an unconventional water massage or enjoy peaceful moments in the surrounding nature. Whether you are planning a family holiday, celebration, wedding, or corporate event, the team at Hotel Kopanice will ensure your stay is truly unforgettable.



3 halls (total capacity 110, capacity of the largest hall 60)



data projector, screen, speaker, flipchart



Žitková 160



[www.hotelkopanice.cz](http://www.hotelkopanice.cz)

More info: [East Moravia Convention Bureau](#)

# Hotel La Fresca

It is the perfect romantic spot for a weekend getaway or corporate event in Kroměříž, right on the Velké náměstí.

Stay in a charming Renaissance house with cosy rooms furnished in a historic style. Choose from a single room, a spacious double room with a king-sized bed, or an apartment offering views of the square and the city's landmark – the chateau tower.

The arcade entrance adds a unique atmosphere to the hotel, while the restaurant with its own garden invites you to enjoy an excellent breakfast, lunch menu, or dessert.

For relaxation after exploring the town, there is an infrared sauna, and if you are planning a corporate meeting or a small celebration, the hotel's stylish lounge provides the perfect venue. La Fresca combines romance, comfort, and practicality – the perfect combination for discovering Kroměříž!



30–50 persons - 1 hall



data projector, screen, flipchart



Velké náměstí 109/55, Kroměříž 76701



[www.lafresca.cz](http://www.lafresca.cz)

More info: [East Moravia Convention Bureau](#)

# Hotel U Zlatého kohouta

The hotel will enchant you with its location directly on the historic Velké náměstí in Kroměříž, known as the "Haná Athens." This stylish hotel offers romantic accommodation with stunning views of the historic landmarks and the Archbishop's Chateau.

Hotel U Zlatého kohouta is ideal not only for romantic getaways but also for corporate events. It features a lounge for 20 persons and a hall for 80–100 guests, perfect for training sessions, parties, weddings, or team-building events. Facilities include a data projector, sound system, and the option to arrange supporting programmes, such as wine tastings.

The hotel also houses the IN VINO wine gallery, the AMADEUS patisserie with musical evenings, and a stylish hostel. At U Zlatého kohouta, history, elegance, and versatile facilities come together to ensure an unforgettable stay or event.



2 halls with a total capacity of up to 120 (capacity of the larger hall up to 100)



Flipchart, data projector, screen, sound system



Velké náměstí 21, 767 01 Kroměříž



[www.uzlatehokohouta.cz](http://www.uzlatehokohouta.cz)

More info: [East Moravia Convention Bureau](#)

# Hotel Endemit

Nestled in the enchanting nature of the Beskydy Mountains, Endemit Boutique Hotel & Spa offers the perfect setting for romantic getaways and corporate events.

The elegant interior combines modern architecture with natural materials, creating a warm and inviting atmosphere. From single rooms to duplex suites with panoramic mountain views, every detail has been designed with your comfort in mind.

For ultimate relaxation, enjoy the private wellness centre featuring saunas, a whirlpool, and relaxing treatments, or indulge in a romantic evening with Prosecco by candlelight. For active guests, the hotel offers a gym with panoramic views, an outdoor sports ground, and opportunities for team-building activities – from sports tournaments to tailored private programmes.

Whether you're planning a romantic weekend, corporate training, or a restful team-building retreat, Endemit Boutique Hotel & Spa is a place where luxurious comfort meets extraordinary experiences.



2 halls with a total capacity of 80 persons + a large hall with a capacity of 55 persons



wide screen LCD, data projector + screen, whiteboards, flipcharts. Large windows provide plenty of daylight.



Horní Bečva 1029, 756 57



[www.endemithotel.cz](http://www.endemithotel.cz)

More info: [East Moravia Convention Bureau](#)

# Boutique hotel Radun

In the heart of the spa town of Luhačovice, surrounded by a natural park and the healing Aloiska spring, you will find Boutique Hotel Radun.

This unique hotel, inspired by a Functionalist villa from the 1930s, combines First Republic elegance with modern comfort.

Guests can enjoy stylish rooms with wide beds, balconies, and designer bathrooms. For romantic moments, the wellness suite with a whirlpool on the terrace is an ideal choice. Culinary delights await you at the hotel's Republika Restaurant, renowned for its gourmet cuisine and carefully selected wines.

Hotel Radun is also an excellent choice for corporate events. With its peaceful location and opportunities for relaxation in the wellness centre or the nearby water park, it is the perfect venue for team-building activities and inspiring meetings.



1 hall (maximum capacity 50 persons)



necessary equipment on request

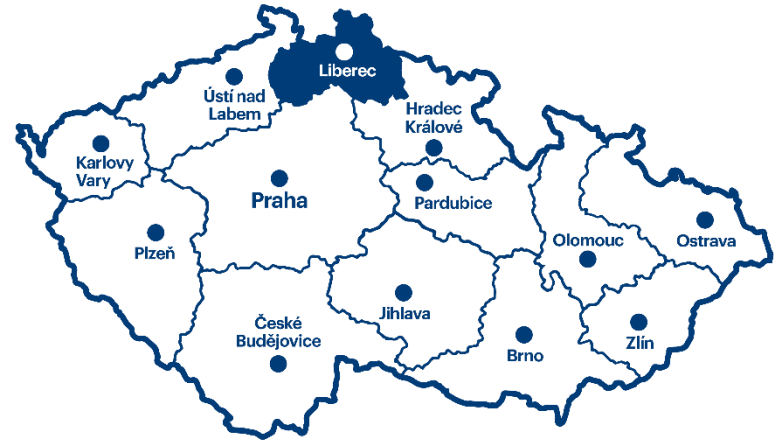


Bílá čtvrť 447, 763 26 Luhačovice



[www.hotelradun.cz](http://www.hotelradun.cz)

More info: [East Moravia Convention Bureau](#)



Romantic venues

# Liberec Region



# Sychrov Chateau

Why should chateaux serve only weddings and cultural events when their spaces can also host your conference? Sychrov Chateau is a unique romantic estate surrounded by an expansive English park. It will enchant you with its richly decorated interiors, the atmosphere of a bygone era, and a variety of cultural events.

Sychrov Chateau, the romantic gem of Northern Bohemia, offers exceptional spaces for hosting conferences, corporate events, or private celebrations. The main attraction is the Chateau Gallery, which can accommodate up to 200 persons. This impressive hall, adorned with a rare collection of paintings, adds an unforgettable atmosphere to any event. For smaller gatherings, there is a hall for 50 guests or a cosy lounge with a capacity of 30 persons.

Sychrov Chateau combines a prestigious romantic setting with professional facilities – the perfect venue for unforgettable events.



Hall 1: 200 persons, Hall 2: 100 persons, Hall 3: 50 persons, Lounge: 40 persons



without equipment



Sychrov 1, 488 44 Sychrov



[www.zamek-sychrov.cz](http://www.zamek-sychrov.cz)

More info: [Region Liberec](#)

# Hotel Petřín

Hotel Petřín offers modern spaces for corporate meetings and accommodation with stunning views of Jablonec nad Nisou. Professional service is complemented by a top-class restaurant, ensuring exceptional gastronomic experiences. With its unique location, Hotel Petřín is the ideal venue for conferences, training sessions, and team-building events.

There is a large hall with a capacity of up to 250 persons, a smaller hall for 130 guests and a cosy lounge for 15 persons.

Modern equipment, outstanding gastronomy, and a professional approach ensure the smooth running of every event.

The venue's unique atmosphere is enhanced by the opportunity to visit the lookout tower, which offers breathtaking views of Jablonec and its surroundings. The hotel also provides stylish accommodation and a range of supporting activities, ideal for team-building events or relaxing after a demanding day.



Hall: 250 persons, Training room: 130 persons, Lounge: 15 persons



Screen and monitor, projector, sound system



Petřínská 6, 466 06 Jablonec nad Nisou



[www.hotelpetrin.cz](http://www.hotelpetrin.cz)

More info: [Region Liberec](#)

# MUZA - North Bohemian Museum in Liberec

The North Bohemian Museum in Liberec is not just a centre of history and art but also the ideal venue for hosting corporate events. It offers representative spaces with a unique atmosphere, giving your conferences, training sessions, or social gatherings an unforgettable character. Combine your events with the opportunity to discover the cultural richness of the region!

The North Bohemian Museum in Liberec brings together culture and modern facilities for corporate events. It features a hall with a capacity of up to 200 persons, perfect for conferences, training sessions, or social occasions. The unique atmosphere is further enhanced by the opportunity to explore the museum's exhibitions and visit the tower, home to the world's longest glass ladder, crafted by the Salanský brothers. Combine work with an inspiring cultural experience.



Hall: 200 persons



screen, projector, sound system



Masarykova 11/437, 460 01 Liberec



[www.muzeumlb.cz](http://www.muzeumlb.cz)

More info: [Region Liberec](#)



# Svijany Chateau

Svijany Chateau, located in the picturesque region of Bohemian Paradise, offers visitors a unique atmosphere steeped in rich history. This originally Renaissance chateau, surrounded by beautiful nature, is the perfect venue for tours, cultural events, and corporate meetings. Immerse yourself in history and enjoy the beauty of this historic gem.

The spaces of Svijany Chateau, which include several halls and lounges with a capacity of up to 84 persons, provide an inspiring historical setting for hosting corporate events. In addition to conferences and meetings, you can visit the Svijany Brewery, where you can learn about the brewing process and taste its excellent beers. For ultimate relaxation, the beer spa offers a unique experience with beer-based treatments.



Hall 1: 84 persons, Hall 2: 80 persons, Hall 3: 80 persons, Lounge 1: 48 persons, Lounge 2: 25 persons, Lounge 3: 6 persons



screen, projector, sound system



Svijany 30, 463 46 Svijany



[www.hotelzameksvijany.cz](http://www.hotelzameksvijany.cz)

More info: [Region Liberec](#)

# Vysoká Farm

Vysoká Farm offers exceptional facilities for corporate events, training sessions, or team-building activities in a peaceful setting surrounded by nature. Modern conference spaces, stylish accommodation, and a variety of outdoor activities guarantee an unforgettable experience for your team – the perfect combination of work and relaxation!

At Farma Vysoké, you will find a modern hall for 85 persons, ideal for training sessions and corporate meetings. In addition to the professional environment, you can enjoy a range of activities, including horse riding at sunset, a romantic dinner, or relaxation in the wellness centre. A perfect blend of work facilities and memorable experiences in the heart of beautiful nature.



Hall: 85 persons



screen, projector, sound system

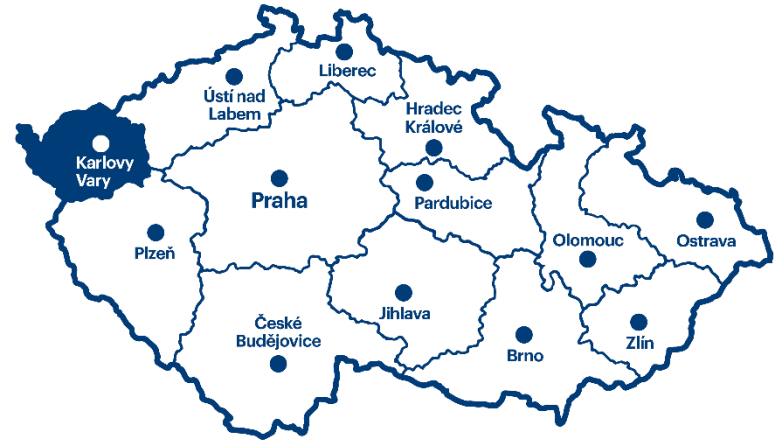


Vysoká 9, 463 31 Chrastava



[www.hotelfarmavysoka.cz](http://www.hotelfarmavysoka.cz)

More info: [Region Liberec](#)



Romantic venues

# Karlovy Vary Region

# Dvorana Loket

The building was constructed in 1895 in the historic part of the romantic town of Loket. From 1946, the hall was used for social and cultural events, with its standout features being the entrance hall and the main hall with a stage.

The venue enjoyed a vibrant cultural life up until the 1980s. After being privatised, it fell into disrepair for many years. Since 2002, the building has been back in the ownership of the town. In 2015, the Dvorana Hall was declared a cultural monument, and between 2015 and 2022, it underwent extensive renovations. Today, it houses the Dvorana Cultural Centre.

The venue is available for hire and is ideal for hosting balls, proms, conferences, congresses, seminars, workshops, training and corporate events, exhibitions, theatre performances and concerts or other social events.



capacity of Dvorana Loket - 200 persons



basic conference equipment



Loket nad Ohří



[www.dvoranaloket.cz](http://www.dvoranaloket.cz)

More info: [Carlsbad Convention Bureau](#)

# Wildstein Castle

Combining team-building activities at the Gothic Vildštejn Castle offers an excellent way to strengthen teamwork and foster relationships among employees.

## Medieval Games and Adventures:

Organise medieval games and adventure challenges, such as archery, sword fighting, or a treasure hunt in the castle's historic setting. These activities will not only engage the team in fun competitions but also promote collaboration and communication.

## Historical Tour with Tasks:

Arrange a guided historical tour of the castle with various tasks and puzzles that the team must solve together. This activity will not only enhance knowledge of the castle's history but also encourage teamwork and strategic thinking.

The combination of these activities at Vildštejn Castle will create an unforgettable team-building experience that strengthens the team and moves them closer to achieving their shared goals.



 total capacity is 80 persons

 screen, data projector, microphone, sound system...

 Skalná

 [www.vildstejn.cz](http://www.vildstejn.cz)

More info: [Carlsbad Convention Bureau](#)



# Mill Colonnade - pavilion

The Mill Colonnade, one of the iconic buildings of Karlovy Vary, has adorned the spa town since 1881. Designed by the renowned Czech architect Josef Zíttek, it is the largest of the four Karlovy Vary colonnades. Between 1891 and 1892, it was extended with the northern pavilion, which shelters the Skalní Spring. In total, five of Karlovy Vary's healing springs emerge in the Mill Colonnade: Mill Spring, Rusalka Spring, Prince Václav Spring, Libuše Spring, Skalní Spring

In 2014, the upper terrace of the Mill Colonnade was opened for the first time, offering one of the most beautiful views of the historic centre of the spa town. For nearly 20 years, tourists were unable to access the terrace due to repairs and renovations. Today, the terrace and pavilion are open during the main season, which runs until the end of September.



pavilion capacity max. 30 persons, terrace - 150 persons



none



Karlovy Vary



[www.karlovyvary.cz](http://www.karlovyvary.cz)

More info: [Carlsbad Convention Bureau](#)

# Bečov nad Teplou Castle and Chateau

The Bečov Castle and Chateau complex is an ideal venue for all kinds of social events. The location of the Baroque chateau and the Gothic castle is also a popular choice among filmmakers.

The diverse grounds of Bečov Castle and Chateau offer a wide range of possibilities for hosting various social events. Currently, we offer the rental of castle gardens, garden terraces, castle courtyard, multifunctional hall, educational hall, etc.



capacity of the terrace - 150 persons, multi. hall - 60 persons, gardens - more than 300 persons, chapel - 40 persons, educational hall - 25 persons, tower - 25 persons



basic equipment for events (furniture, projector, screen...)



Bečov nad Teplou



[www.zamek-becov.cz](http://www.zamek-becov.cz)

More info: [Carlsbad Convention Bureau](#)

# Vítkova Hora – the most romantic venue for your event

A romantic hotel in a picturesque location overlooking the spa centre of Karlovy Vary. The hotel enjoys a unique position on the edge of the spa centre, offering beautiful views of Karlovy Vary and surrounded by the forests of the Slavkovský les Protected Landscape Area.

The circular building has a capacity of 24 beds and features hotel rooms with balconies. It also includes a restaurant with a pleasant summer terrace, social spaces with a bar, and a wellness centre. The main advantages of the hotel are its natural surroundings, high standard of services, and relaxation treatments. The hotel is ideal for training sessions, corporate events, and weddings. Additionally, the property features an extensive forest area with cabins, bungalows, and caravan pitches.



capacity of meeting facilities - 50 persons, terrace - 50 persons, hotel - 24 rooms, bungalows - 50 persons



basic equipment

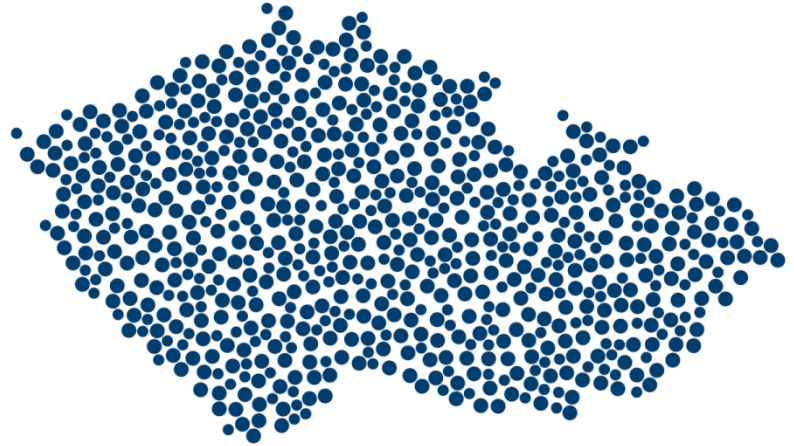


Karlovy Vary - Olšová Vrata



[www.vitkovahora.cz](http://www.vitkovahora.cz)

More info: [Carlsbad Convention Bureau](#)



**Next year you can look forward to more interesting topics of our monthly magazine!**

**Czech Convention Bureau**

[www.czechconvention.com](http://www.czechconvention.com)