

Czechia Travel Trade Day 2024 Hradec Králové Region 26. - 28. 4. 2024

Fam trip Baroque and Natural Heritage

Broumov region, Kuks

Group of Broumov Churches - the churches around the Broumov Monastery are a monument of a unique construction and economic development, initiated by Abbot Otmar Zinke – a capable representative of the Benedictine Břevnov-Broumov abbey. Despite the necessary austerity of design, the churches bear the seal of uniqueness and creative originality of their creators – the father and son Dientzenhofers.

Broumov Monastery – the monastery impresses visitors with its Baroque makeover performed by the Dientzenhofers and a collection of precious artefacts on display. You can see a unique copy of the Turin Shroud, Vamberk mummies dating from the 17th and 18th centuries in the undercroft and a Gothic fresco entitled “The Three Kings” in the bell tower.



Broumov rock towns – quaint stone mushrooms, spectacular views, legendary Baroque chapel. The stunning rock formations called Broumov Walls are situated between Police nad Metují and Broumov.



Hospital Kuks – a Baroque Miracle – unique complex of former spas, a chateau and hospital with the church of the Holy Trinity and the old dispensary was established at the end of the 17th century. The most important adornments are the sculptures Vice and Virtue by the artist M.T. Braun.

Hotel U Beránka in Náchod

Art Nouveau 4* hotel with 52 rooms and 3 apartments

Fam trip Historical Heritage

Chateaux of Orlice River, Vamberk

In the foothills of the Orlické Mountains, on the banks of the Divoká Orlice River, along a nine-kilometer trail, there are six noble manors, châteaux, a castle and a ruin. This is the **Czech Loire**.

Chateau Kostelec nad Orlicí - the chateau was built in the Empire style in 1829-1833 for Earl Josef Kinský, and the Kinský Family lived there until 1948. After 1948, there were several agricultural institutions that resided in the chateau, which had drastic impacts on the condition of the castle. In 1992, the property was returned to the Kinský Family as part of the restitution process, and both the interior and exterior underwent extensive reconstruction. The preserved contents in the Empire style, together with other objects that were originally owned by the family, were gradually restored and today you can visit the exhibition entitled Life in Biedermeier.

Chateau Častolovice - the original chateau at the foothills of the Orlické Mountains was rebuilt several times by the Sternbergs, who have been its owners from the end of the 17th century up to today, except for the German occupation and the socialist disruption. They gathered extraordinary collections of paintings with originals by outstanding European painters, such as Karel Škréta, Lucas van Valckenborg and J. H. Schonfeld and a series of portraits of Czech kings. The Tapestry Room and the Smoking Lounge are decorated with the most precious paintings.

Mini Zoo – with variety of domestic and exotic animals established by the owner Diana Sternberg.



Museum of Lace in Vamberk - a unique exhibition explaining development of Czech lace from the 18th century to the present day. A separate part of the exhibition is a collection of unique works by contemporary Czech artists.

Chateau Rychnov nad Kněžnou - early Baroque chateau of the Kolowrat family, adjusted and enlarged according to the project by J. Santini in the 18th century.

Historical interiors with period furnishings, the art collection of the Kolowrat family. The collection of the Kolowrat family belongs to the biggest historical picture-galleries in the country.



Třebechovice Museum of Nativity Scenes - the most valuable and admired nativity scene of the museum is the unique mechanical Probošt's nativity scene which has also become part of our Czech national cultural heritage. The nativity scene is more than 100 years old and includes about 2,000 carved parts and 350 figures. Fifty-one figures move at work, and about one hundred and twenty figures ride on several moving belts.

April Hotel Panorama in Rychnov nad Kněžnou

4* wellness hotel with 31 rooms

Fam trip Active Holidays

Krkonoše Mountains

Pec pod Sněžkou – the town is surrounded with a lot of mountains and peaks. In the north-east, there is the wooded Růžová hora (1,396m), in the north there are the three highest mountains of Krkonoše – Sněžka (1,603m), Studniční hora (1,554m) and Luční hora (1,555m). Such conditions make this place perfect for tourism.

Jánské Lázně – eight-seat cableway to the top Černá hora. The elevation is 566 m. Opportunity for downhill on scooters.

Treetop Walk Krkonoše - is located in the heart of the majestic forests of the Krkonoše National Park. It shows the unique nature of the highest mountain range in the Czechia with its subalpine character of glacier carvings, mountain lakes and rugged cliffs. We will introduce you to the beautiful forests here literally from the roots to the treetops.

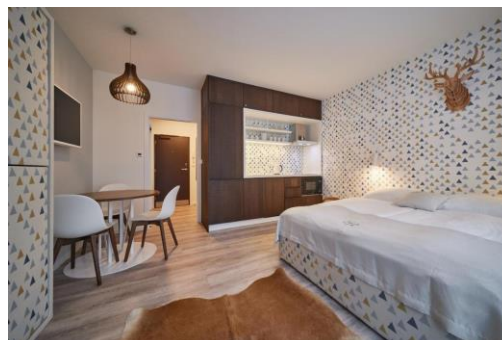


The Pecký Brewery - brewing with the tradition processes, with high-quality Czech ingredients and from the mountain spring water.

Museum of Krkonoše Mountains in Vrchlabí - after six years of reconstruction, the new Krkonose Museum is opening. The modern and interactive exhibition documents not only the story of the unique nature, but also its connection with the fate of people who live in the mountains.

Aparthotel Svatý Vavřinec in Pec pod Sněžkou

4* design accommodation with 78 apartments and wellness center. Each of studios or apartments offers harmony associated with design, comfort and convenience.



Hotel Horizont in Pec pod Sněžkou

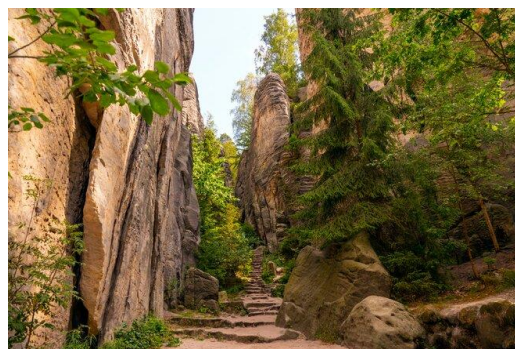
135 rooms

Sky bar 18 – a proper view from the 18th floor of the hotel

Fam trip Experience Holidays

Prachov Rocks, Dětenice, Miletín

The Prachov Rocks - pristine wilderness and rock formations up to forty metres tall. The most famous place in Bohemian Paradise is, without a doubt, the Prachov Rocks, heaven on earth for sightseers and rock climbers alike. A network of marked tourist routes will lead you through ravines, gullies, gorges, and along the tops of sandstone rock formations with lookout points and enchanting alcoves. The most frequented sites include Vyhlička Českého ráje (Bohemian Paradise Lookout Point), Americká sluj (American Cavern), and Císařská chodba (Imperial Corridor).



Lets enjoy Nordic walking!

Dětenice Chateau Resort – the resort consists of a chateau in the late Baroque style, Medieval tavern, Chateau brewery, Rustical hotel, Medieval hotel and Knights tournaments.

Visit of the Chateau and the brewery

Experiental gastronomy at the Medieval tavern

Hořice rolls in Miletín - the recipe for Hořice roll has existed since 1812, when according to legend Napoleon's injured general and chef gave it to the local Mrs Líčková as a reward for her treatment of his wounds during the return from the rout in Russia. You can purchase Hořice rolls in various form from many producers who have based their products on the original recipe.

The European Union has granted a protected trade mart for the name „Hořice rolls“ and as such they can only be made in Hořice and the surrounding municipalities up to 10 km from the borders of the town.



Workshop how to make traditional roll

Medieval hotel Dětenice

4* stylishly furnished hotel with 68 rooms

Big entrance hall with reception and massive wooden gallery