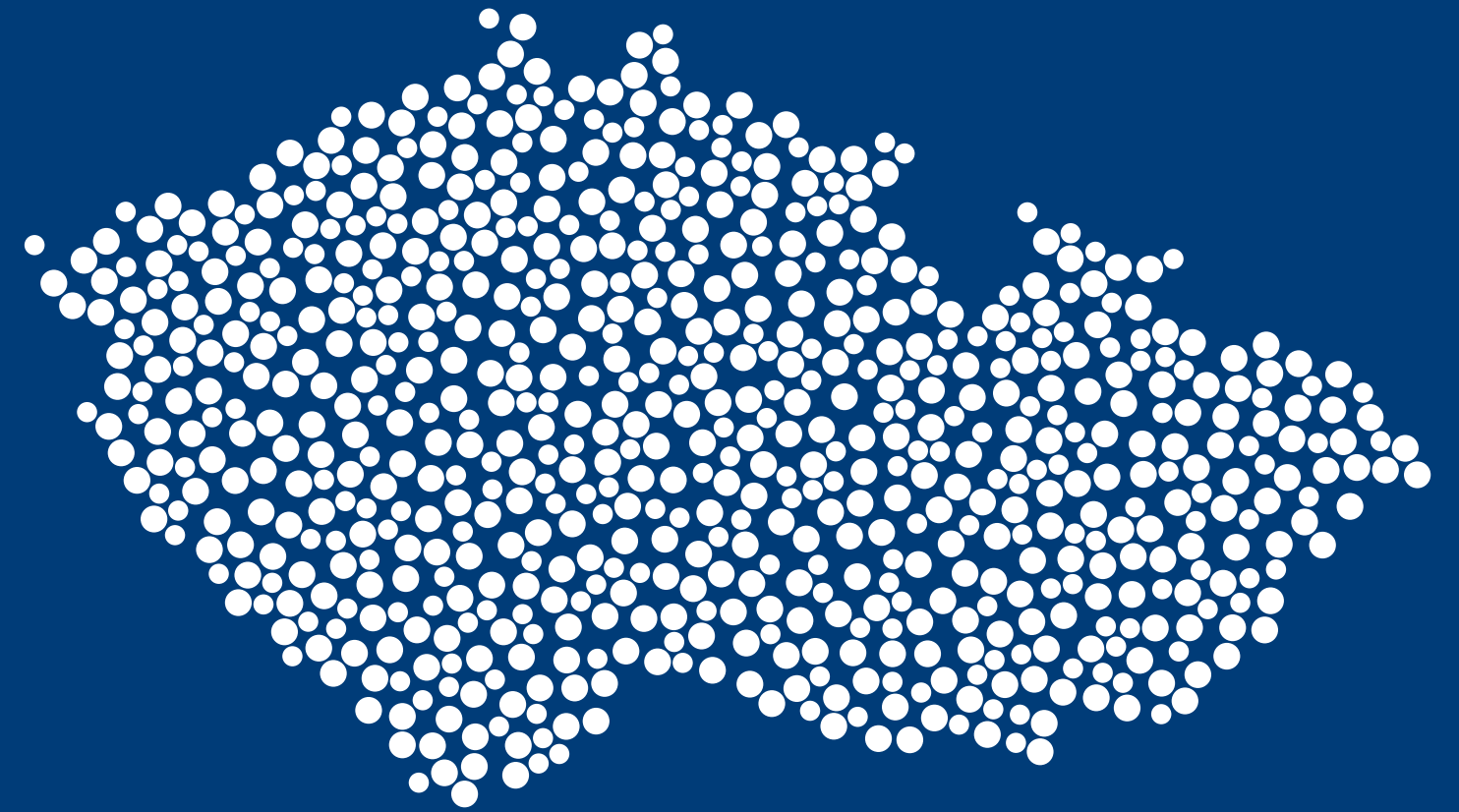


Inspirational Monthly Magazine of the Czech Convention Bureau

Unexpected Venues

... churches, caves and other extraordinary venues for your event



Unexpected Venues

<u>Capital City of Prague</u>	3
<u>South Bohemian Region</u>	9
<u>South Moravian Region</u>	18
<u>Karlovy Vary Region</u>	24
<u>Vysočina Region</u>	31
<u>Hradec Králové Region</u>	37
<u>Liberec Region</u>	43
<u>Moravian-Silesian Region</u>	49
<u>Olomouc Region</u>	55
<u>Pardubice Region</u>	61
<u>Pilsen Region</u>	67
<u>Central Bohemia Region</u>	73
<u>Ústí nad Labem Region</u>	79
<u>Zlín Region</u>	85



Capital City of Prague

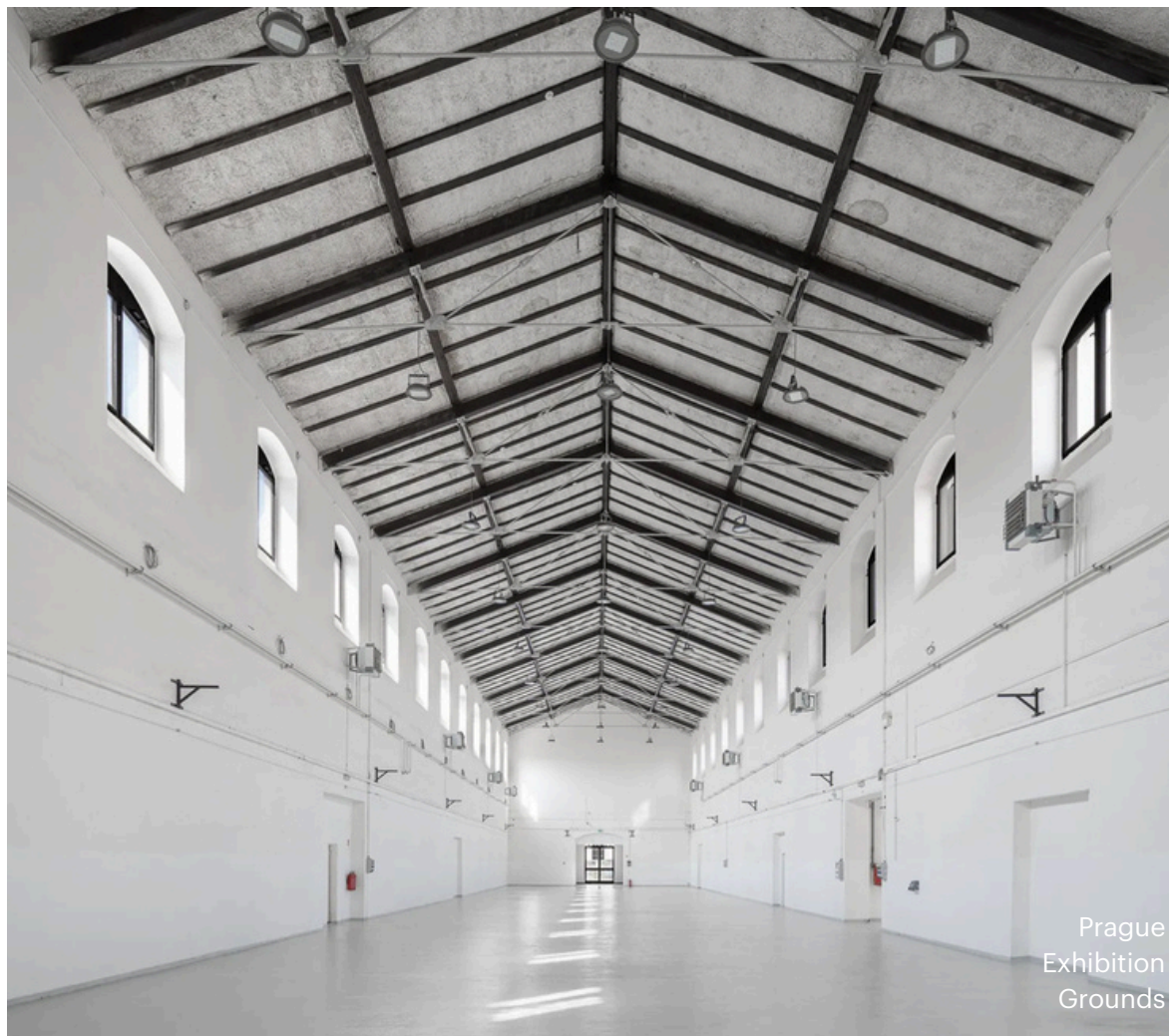
Unexpected Venues



Holešovice Market

Holešovice Market has served its current purpose for only 45 years – the complex was established in the 19th century as the Central Slaughterhouse of the Capital City of Prague and functioned as such until the 1970s. The unusual premises of the former slaughterhouse and livestock and meat market are now available for hire to host a wide range of events.

The Holešovice Market complex on the banks of the Vltava is a place full of life: there are shops, restaurants, cafés, galleries, a theatre and other cultural venues. The halls that once served for slaughtering, processing and selling meat have been renovated and are now ideal spaces for hosting events. Not only flexible, airy and spacious interiors are available, but also large outdoor areas.



2000 persons



AV equipment – for example own equipment can be used



Bubenské nábřeží 306/13, Praha 7



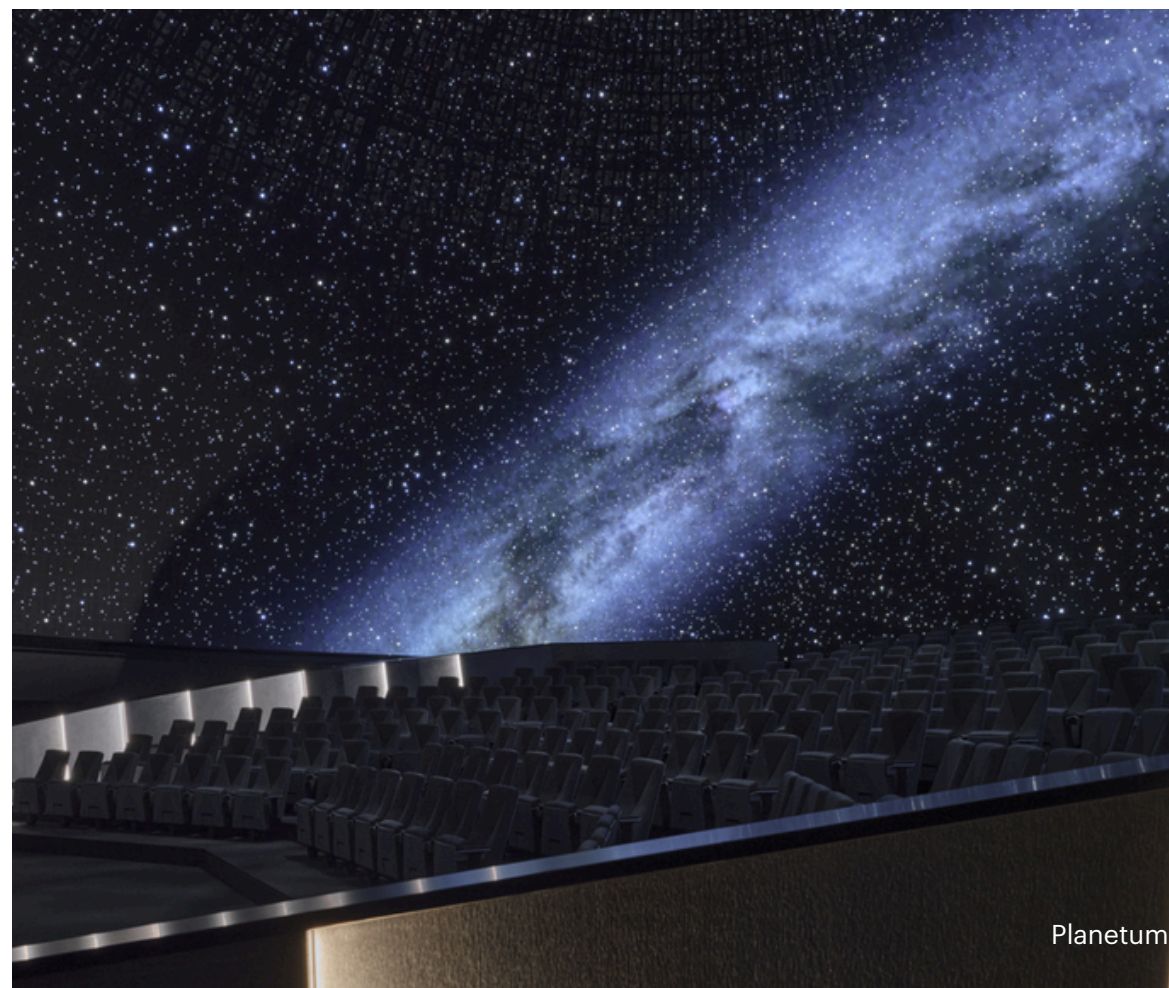
www.holesovickatrznice.cz/pronajem

[More info: Prague Convention Bureau](#)

Planetarium Prague

Planetariums are places where the public encounters science and education. However, visitors come to Planetarium Prague in Stromovka not only for impressive space projections, but also for conferences, social and cultural events, and other gatherings.

The largest planetarium with the biggest projection surface in the Czech Republic is located in the greenery of Prague's Royal Game Reserve. Following a recent modernisation, it boasts a cutting-edge LED DOME system with 45 million diodes, which is unique even within Europe. This system is installed in the circular LED planetarium auditorium with a capacity of 278 persons. A cinema hall with a slightly smaller capacity offers the use of a 4K digital projector. The Foyer, which has the largest capacity of all the spaces, is also available for events.



It is not advisable to delay when it comes to hiring the halls: Planetarium Prague points out that these spaces are available for hire no more than ten times a year!



650 persons



LED DOME, digital projection and more



Královská obora 233, Praha 7



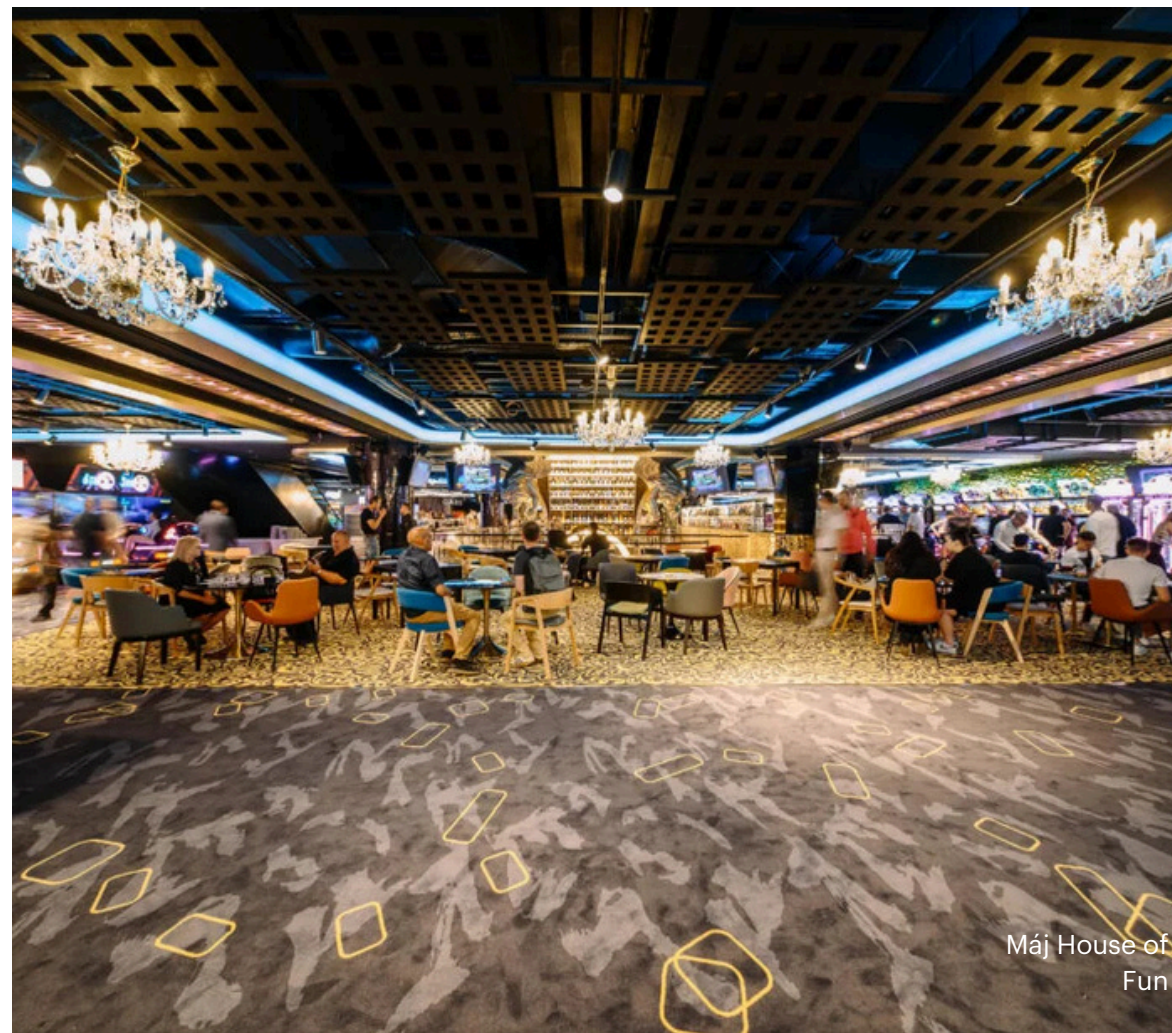
www.planetum.cz/pronajem-prostor

[More info: Prague Convention Bureau](#)

Máj House of Fun

Máj Department Store, a unique example of 20th-century high-tech architecture, was transformed after an extensive renovation in 2024 into House of Fun Prague – an equally unique entertainment and social centre in the heart of Prague.

The listed building still appears outwardly as a department store – its two lower floors continue to serve this purpose – which makes the function of all the other floors even more surprising for visitors. LEVELS is located on the 3rd to 5th floors – a modern multifunctional space for hosting events, equipped with the largest 4K LED screen in Prague, with a conference capacity exceeding 400 persons. For events making use of arcade games, state-of-the-art simulators and several bars with catering options, the capacity possibilities are significantly higher.



The rooftop restaurant Fly Vista with a terrace and panoramic views of Prague can accommodate a further 120 persons. Another option for an accompanying programme is the interactive historical museum Back in Time on the 6th floor. Máj House of Fun thus offers not only premium event spaces but also a wide range of entertainment.



3000 persons (of which 460 in the Conference Hall)



4K LED screen, BOSE sound system



Národní 63/26, Praha 1



houseoffunprague.cz

[More info: Prague Convention Bureau](#)

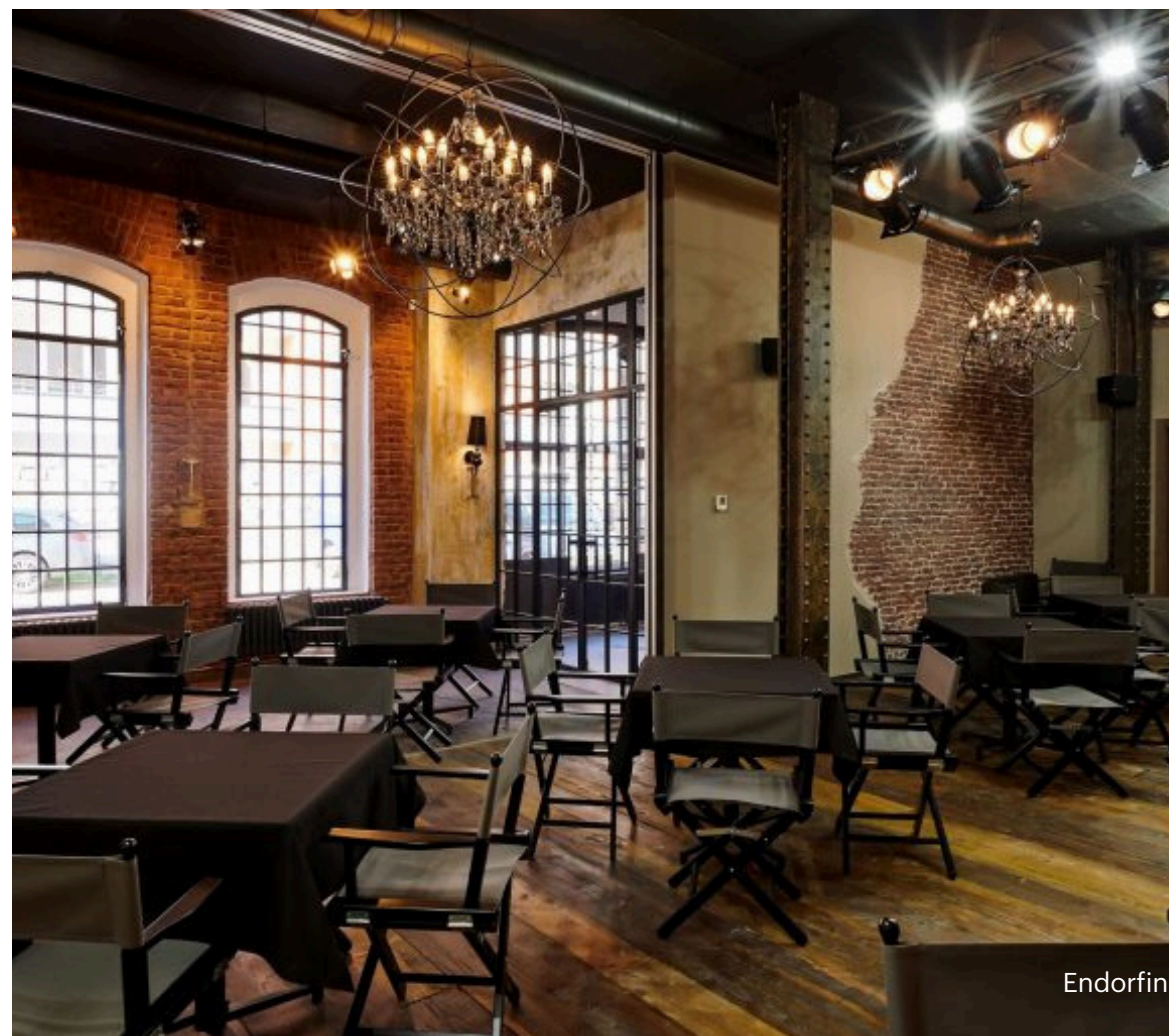
Endorfin

An industrial complex from the early 20th century, originally the seat of the Vršovice Sugar Refinery, is today a place connecting work activities with entertainment. Endorfin – modern, well-equipped representative spaces include not only a conference room but also unique escape games with a range of accompanying programmes.

The interiors of Endorfin, designed in an industrial loft style with elements of brick walls, concrete, wood and metal decorations, feature a compact multifunctional hall, a stylish bar with catering facilities and additional separate rooms with four escape games, suitable for hosting a wide range of conferences, workshops, presentations, parties and other social events.



Endorfin



Endorfin

Endorfin also offers original social games and team knowledge quizzes as part of its permanent programme. An individual approach to each event is taken for granted here.



120 persons



AV equipment available upon request



Petrohradská 216/3, Praha 10



endorfin.cz

[More info: Prague Convention Bureau](#)

Fanta Building

Railway station buildings today do not necessarily serve only for handling passengers – they are also becoming shopping or gastronomic centres. Prague Main Railway Station, however, also conceals surprisingly impressive event spaces within the Art Nouveau Fanta Building.

Prague Main Railway Station consists of two listed buildings: the “new” check-in hall from the 1970s and the old railway station building, created at the beginning of the same century by reconstructing the original Emperor Franz Joseph Station. It is in the latter – the Fantova Building – that you will find two cafés, two spacious halls and a lounge, all featuring equally generous original decoration.



Fanta’s Hall and the Column Hall captivate not only with their interior decoration but also with an unusual view of the trains on Platform 1. The lounge, offering an atmosphere of privacy for smaller meetings, is dominated by a marble conference table. The charming two-storey Foyer Café near the halls can also be hired for various types of social events.



500 persons



AV equipment: available upon request



Wilsonova 300/8, Praha 2



fantovabudova.cz

[More info: Prague Convention Bureau](#)

South Bohemian Region

Unexpected Venues



Veteran Car Museum and Nová Bystřice Brewery

Are you looking for a unique venue for your event? The Nová Bystřice Museum, full of gleaming vintage treasures, combined with a microbrewery, will pleasantly surprise you.

Hold your conference in an unusual setting among polished vintage cars.





The informal environment of the museum creates a great atmosphere. The operator's extensive experience in organising club meetings, large gatherings and smaller meetings ensures the smooth running of your event. Arranging accommodation or catering is not a problem either.

The indoor space of the museum can be used for approximately 50 persons.

For outdoor events, the capacity is 100 persons or more.



During outdoor events, you will experience an excellent connection between the brewery and the veteran car museum, which share a common courtyard and will elevate your event to perfection.

-  50 persons museum, 25 brewery, 150 courtyard
-  modern AV equipment
-  Vídeňská 136, Nová Bystřice
-  muzeumveteranu.cz

[More info: South Bohemia Convention Bureau](#)

Meetings in the Heart of Český Krumlov

Port 1560 is a beautiful venue for a conference in the historic centre of Český Krumlov, set within the sensitively revitalised complex of the former Schwarzenberg brewery. This unique space combines a historic atmosphere with modern facilities and offers an ideal setting for conferences, corporate meetings, workshops and social events.

The complex features several indoor and outdoor spaces with flexible layouts, allowing the programme to be adapted to different types of events. The total capacity reaches up to several hundred persons, making Port 1560 an ideal venue both for smaller professional gatherings and for larger corporate conferences.



There is a choice of four possible spaces – a modern visitor centre with a capacity of up to 100 persons, a banquet hall for more intimate gatherings with a capacity of approximately 70 persons, a gallery not only for art lovers with a capacity of 70 persons, or the brewery courtyard, suitable for larger events with a capacity of 1000 persons.



3 halls with a capacity of 70 - 100 people



data projector, projection screen/TV, flipchart/board



Pivovarská 27, Český Krumlov



www.ckrumlov.info/cz/mice-prostory-port-1560

[More info: South Bohemia Convention Bureau](#)

Bzí Estate

Are you looking for a venue for your team that inspires, motivates and leaves a lasting impression?

Bzí Estate near Dolní Bukovsko offers a unique combination of a historic setting, ideal for any corporate event.

Here, meetings, teambuilding activities, conferences or gala evenings become unforgettable experiences.

Your event can be held on a romantic pier, in the estate courtyard, in the château tavern or on the island.



Swap the routine of office spaces for the inspiring tranquillity and energy of our estate. Flexible and unique spaces. We offer versatile locations for teambuilding activities, formal conferences and dinners, all under one roof.

The estate provides accommodation for up to 80 guests.



tavern 145 persons, pier 80 persons, courtyard 500 persons, island 100 persons



full modern AV equipment



Bzí č. 10, Dolní Bukovsko



www.panstvi-bzi.cz

[More info: South Bohemia Convention Bureau](#)

Rožmberk Brewery

Rožmberk Brewery is located in the picturesque town of Rožmberk nad Vltavou, directly on the banks of the Vltava River, close to the historic square. This originally noble brewery has a long tradition dating back to 1590, when it was founded by Vilém of Rožmberk.

Today, the brewery combines a historic atmosphere with modern facilities. In the newly renovated building, in addition to the beer production itself, there is also a brewery restaurant, hotel accommodation and wellness facilities. Visitors can taste several types of beer, enjoy regional gastronomy or take part in tastings and beer programmes.

Rožmberk Brewery offers 4 conference rooms with a total capacity of up to 140 persons. The spaces are suitable for corporate presentations, training sessions, workshops and private celebrations.



As an accompanying programme, there is the already mentioned brewery tour with tasting, or your meeting can be combined with the popular activity of canoeing or rafting along the Vltava River. A wonderful experience may be a full-day cruise to Český Krumlov.

The brewery itself also offers accommodation in 21 rooms, plus 23 rooms in a partner hotel.



140 persons



modern technical equipment including high-quality Wi-Fi connection



Rožmberk nad Vltavou 65



www.ace-hotels.com/pivovar

[More info: South Bohemia Convention Bureau](#)

Bechyně Estate

At Bechyně Estate resort, you will find everything you need for a successful and unforgettable event. Combine work activities with relaxation in a beautiful setting.

Bechyně Estate provides several venues for hosting your corporate and social events.

Events can be held in the exclusive setting of Bechyně Château, in the cosy Černice Château, located right next to the oldest golf course in South Bohemia, or in a modern conference room at the Panská Hotel on Bechyně square.



Bechyně Estate offers spaces for smaller, private meetings as well as large halls for up to 1000 persons.

An excellent option for outdoor events is the château park overlooking the picturesque valley of the Lužnice River, with a capacity of up to 2,500 persons.



indoor up to 1000 persons, outdoor 2,500 persons



full modern AV equipment



Panství Bechyně s.r.o., Zámek 1



<https://resort-bechyne.cz/pronajmy>

[More info: South Bohemia Convention Bureau](#)

Knights' Hall of Strakonice Castle

Strakonice Castle, one of the most important historical landmarks of South Bohemia, offers attractive spaces for both cultural and professional gatherings.

On the third floor of the former manor brewery, you will find the Knights' Hall, a representative space with the unique atmosphere of a historic building. Following interior modifications, the impressive view of the historic roof structure stands out, giving the hall a distinctive character and enhancing the authenticity of the entire space.

The hall is arranged in theatre style with a capacity of up to 131 seats, allowing it to be used for a wide range of events – from chamber concerts and smaller-scale theatre performances to educational programmes, professional lectures and conferences.



Strakonice Castle thus represents an inspiring venue for cultural and professional events that seek to combine a historic setting with a vibrant contemporary programme. The combination of distinctive architecture, an interesting interior and a central location within the town creates a unique backdrop for intimate MICE events as well as cultural programmes.



131 persons



data projector, projection screen, sound system if required



Velké náměstí 2, Strakonice



www.hradstrakonice.cz/saly-na-hrade

[More info: South Bohemia Convention Bureau](#)

Gothic Hall of Prácheň Castle

Prácheň Castle in Písek is one of the important historical landmarks of South Bohemia. The dominant space is the Gothic hall of the original 13th-century castle, which provides an attractive setting for conferences, lectures, chamber concerts or ceremonial gatherings.

The hall accommodates at least 50 persons and, thanks to its architecture, also offers very good acoustics, making it suitable not only for professional events but also for cultural programmes.



The complex also includes the castle fortifications – open terraces that offer a unique outdoor space with views of the historic town of Písek. These spaces can be used, for example, for accompanying programmes, social gatherings or the informal part of an event.



50 persons



modern technical equipment, audio, projector, sound system if required



Velké náměstí 114, Písek



www.prachenskemuzeum.cz

[More info: South Bohemia Convention Bureau](#)

Cellars of Prachatice Town Hall

In the very heart of historic Prachatice, on Velké Square, stands the Renaissance Old Town Hall, offering representative spaces for both cultural and professional gatherings.

The dominant feature of the building is the Town Hall Hall, an elegant and representative space suitable for professional training sessions, conferences, lectures and social gatherings.



The building also includes unique historic cellars, which provide a completely different and highly authentic setting. Ancient stone walls and an intimate atmosphere create an unmistakable backdrop for smaller cultural events or concerts with a capacity of approximately 40 persons. Every meeting held here gains a distinctive character and an unforgettable atmosphere.



40 persons



AV equipment available



Velké náměstí 1, Prachatice I



www.kisprachatice.cz/radnicni-sal-a-sklepy

[More info: South Bohemia Convention Bureau](#)

South Moravian Region

Unexpected Venues



Moravian Karst Caves

The caves of the Moravian Karst are among the most breathtaking and at the same time most fascinating concert venues in South Moravia. This unique underground world, interwoven with vast rock domes, flowing subterranean rivers and stalactite decoration, offers experiences unlike anywhere else.

In the heart of the protected landscape area of the Moravian Karst, north of Brno, there are numerous accessible caves – such as the Punkevní Caves, Kateřinská Cave, Balcarka, the Sloup-Šošůvka Caves or Výpustek – and some of them, in addition to standard tours, also host cultural events including concerts.



Concerts here make use of the natural acoustics of the enormous underground spaces, lighting effects and a mysterious atmosphere that dramatically enhances the musical experience. A popular event is the “Magical Sounds of Macocha” series, which transforms underground halls from the Punkevní Caves to the Výpustek Cave into a stage for musical evenings featuring programmes ranging from classical music to contemporary genres.

Concerts are held regularly, with the programme including both festival evenings and special musical performances with limited capacity – ideal for corporate events, unconventional teambuilding or VIP guests.



tbd



AV equipment – subject to agreement



Moravian Karst



www.brnoconvention.cz/koncert

[More info: Brno Convention Bureau](#)

Museum of Applied Arts

The Museum of Applied Arts in Brno represents a unique place where the history of applied arts meets contemporary design. The institution is part of the Moravian Gallery, is housed in a representative historicist building on Husova Avenue and, following its recent renovation, offers a modern concept of exhibitions as well as multifunctional spaces suitable for corporate or social events.

It is precisely the contrast between historic architecture and contemporary design that gives every event an original setting. The dominant feature is a generous atrium, which, thanks to its openness and light-filled atmosphere, naturally transforms into a space for a gala reception, concert or conference opening. This is complemented by additional flexible zones that allow the main programme to be combined with networking, workshops or the informal part of the evening.



Technically equipped halls provide facilities for presentations and panel discussions, while the courtyard with a distinctive art installation offers an impressive backdrop for the outdoor part of the programme.

A strong feature of the museum is also its content – design exhibitions and current displays can naturally become part of the accompanying programme and add a cultural dimension to any event. An original detail is the café with a robotic barista, capable of creating a guest's portrait or your logo in the milk foam of a cappuccino, adding an unexpected and memorable touch to every gathering.

The Museum of Applied Arts thus represents a venue for those looking for more than just a conference hall – a space where creativity, aesthetics and an inspiring atmosphere become part of the experience itself.



200



AV equipment – subject to agreement



Husova 536, 662 26 Brno



www.brnoconvention.cz/prostory/umeleckoprumyslove-muzeum

[More info: Brno Convention Bureau](#)

Mendel's Greenhouse

Mendel's Greenhouse in Brno is one of the most impressive and unconventional venues for events in South Moravia. It combines a place with a deep historical legacy, modern architecture and multifunctional use. The building stands in the monastery garden of the Augustinian Abbey in Old Brno – where Gregor Johann Mendel conducted his famous pea experiments in the second half of the 19th century and laid the foundations of modern genetics.

Today's Mendel's Greenhouse is a modern glass-and-steel structure designed by the renowned architectural studio Chybík + Křištof, which follows the original ground plan and orientation of the historic building.

Its structure not only refers to Mendel's scientific principles – the inspiration for its construction elements comes from his laws of inheritance – but at the same time creates an airy, light-filled space with a profound and thoughtful connection between history and the present.



Today, the greenhouse serves as a multifunctional venue suitable for corporate events, conferences, lectures, exhibitions, concerts, workshops and social gatherings. The space has a capacity of up to 100 persons and, thanks to its combination of transparent walls and its connection to the monastery garden, it is ideal both for winter events and for summer gatherings in the open air. For Brno, Mendel's Greenhouse is more than just another event venue – it is a living dialogue between science, art, history and community, bringing cultural, educational and social dimensions directly into the city centre.



100



AV equipment available



[Mendlovo nám. 157/1, Brno](#)



www.brnoconvention.cz/prostory/mendeluv-sklenik

[More info: Brno Convention Bureau](#)

On the Waters of the Baťa Canal

The Baťa Canal, a historic waterway built in the 1930s, is now one of the most attractive experiences in South Moravia. Instead of its original use for lignite transport, it now offers leisure cruises through the picturesque landscape of Slovácko – as well as the opportunity to organise an event directly on the water.

Hiring a boat or houseboat makes it possible to transform a standard event into an exceptional experience. Smaller motor boats (which can be operated even without a captain's licence), comfortable cabin boats and larger vessels with facilities for groups are all available. The programme can be tailored to suit your needs – from a peaceful sightseeing cruise and teambuilding to an evening gathering with catering, wine tasting or live music.



A cruise along the Baťa Canal offers a unique combination of a technical monument, nature and the wine-making atmosphere of the region. Ports along the route also allow stops at wine cellars, landmarks or stylish restaurants.

An event on board thus gains a completely different dimension – it is dynamic, relaxed and naturally connected with the landscape of South Moravia. The Baťa Canal is an ideal choice for those who wish to offer guests an experience that does not take place within four walls, but under the open sky and on the water.



Depending on the group



AV equipment – subject to agreement



Bata Canal



www.brnoconvention.cz/aktivita/lodni-vylet

[More info: Brno Convention Bureau](#)

Brno Water Reservoirs

When you descend beneath the surface of Žlutý kopec in Brno, you enter a space that could serve as a setting from The Lord of the Rings trilogy. Underground domes reminiscent of the Mines of Moria, where brick and concrete form vast barrel vaults and endless corridors, surround your event with a mysterious and intense atmosphere. The three reservoirs from 1874, 1894 and 1917 supplied the city with water until 1997 and today rank among the most remarkable industrial landmarks in Europe.

Following extensive renovation and opening to the public, the Žlutý kopec Water Reservoirs in Brno have been transformed into a unique visitor and cultural space, open for guided and self-guided tours, while also offering a perfect setting for unconventional events — concerts, performances, site-specific installations and creative public events.



Within the spaces beneath Žlutý kopec, the atmosphere can be adapted as needed: from industrial mystique during a musical performance to a visual show playing with light and shadow across the monumental vaults.

The venue can also be used for corporate events, social evenings or themed experiential programmes, where the industrial scenery itself becomes the stage design. It is an experience that connects history, architecture and art, and one that guests will remember thanks to its unusual atmosphere and the power of its visual impact.



134- 532



AV equipment – subject to agreement



Brno Water Reservoirs – Žlutý kopec



www.brnoconvention.cz/prostory/vodojemy-zluty-kopec

[More info: Brno Convention Bureau](#)

Karlovy Vary Region

Unexpected Venues



SPARKASSE PALACE

Sparkasse Palace is a significant architectural landmark of Karlovy Vary. This unique building was constructed in 1906 according to the design of architect Otto Stainl as the seat of the former Municipal Savings Bank. Today, after a sensitive and complete renovation, Sparkasse Palace opens to the public as an exclusive venue for hosting a wide range of events with a capacity of up to 550 persons.

Each year, during the International Film Festival (KVIFF), the palace serves as a representative venue for festival partner presentations and offers various spaces.



ATRIUM

A representative space of the palace with a stained-glass ceiling, richly restored features and a ceremonial atmosphere. Suitable for various types of events for up to 167 persons.

GALLERY

A gallery on the 3rd floor with a view of the atrium and access to lounges. Ideal for catering, a VIP zone, exhibitions and networking.

KNOLL SALON

A historic lounge on the 2nd floor with an elegant interior and views of the city centre. Suitable as a stylish café for relaxation and meetings.



550 persons



basic AV equipment



Divadelní náměstí, Karlovy Vary



www.palacsparkasse.cz

[More info: Carlsbad Convention Bureau](#)

POST COURTYARD

Post Courtyard in Karlovy Vary originally served as stables for postal horses. Over time, however, this place became a popular destination for spa walks. A leisure restaurant was soon established here and Post Courtyard became a frequent meeting place for the spa elite. Since then, it has also been an important social and cultural centre visited by many notable personalities.

The historic Post Courtyard is located on the edge of the spa district, in close proximity to the Richmond Hotel, not far from the Imperial Spa and the Grandhotel Pupp. The building features an original well and fireplace, a wooden ceiling and flooring.



The building is constructed in the Classical style. Over time, several representative halls and additional spaces have been created within Post Courtyard. You will find, for example, a dance pavilion with a covered terrace, a garden pavilion and other beautiful areas.

After many years, it is gradually returning to the cultural and social life of the city. Today, Post Courtyard is a venue for a wide range of cultural and other social events. It offers the Labitzky Hall as well as adjacent spaces suitable for smaller conferences, corporate meetings and social events.



150 persons



basic conference equipment



Slovenská 309, Karlovy Vary



postovnidvur.cz

[More info: Carlsbad Convention Bureau](#)

Jakubov Farm

Jakubov Farm is located in a peaceful area of the Doupov Mountains. It is a spacious stone estate from the 16th century in the village of Jakubov near Karlovy Vary. The property has been renovated with sensitivity and without major interventions in order to preserve its authentic atmosphere. The grounds of the inn are enclosed, ensuring complete privacy for guests.

The main residential building consists of two main parts. The first is a restaurant with a bar with a capacity of up to 50 seats, and the second part is a vaulted hall with a capacity of around 70 seats. Both parts have adjacent sanitary facilities.



The courtyard of the farm is grassed, complemented by stone paving, and offers seating for approximately 80 persons. It is also used for wedding ceremonies.

The complex also includes a spacious barn with a bar, taproom, seating area, dance floor and a stage for a band or DJ. The capacity of the barn is up to 120 persons.

Parking is available for 15 cars directly at the farm, with additional spaces nearby for approximately 20 cars. A coach can also be parked without any difficulty.



130 persons, 200 outdoor persons



basic conference equipment



Jakubov 40, Vojkovice



www.statekjakubov.cz

[More info: Carlsbad Convention Bureau](#)

Becher Villa

In the villa district of Karlovy Vary, you will find a house bearing the name of the town's famous liqueur. The building, together with its garden, forms part of a protected heritage area and is also a listed cultural monument. Today, it has been adapted into an interactive gallery for young visual artists. Due to its high architectural and art-historical value, Becher Villa has been restored with a focus on educational, exhibition, artistic, representative and accommodation functions.



Becher Villa is a multifunctional space where exhibitions of contemporary visual art, workshops, art studios and international artistic projects take place. In the basement of the villa, there are studios for painting, ceramics and graphic art, as well as a social hall and exhibition spaces.



50 seats



AV equipment: subject to agreement



Krále Jiřího 1196/9, 360 01 K.Vary



www.galeriekvary.cz/o-becherove-vile

[More info: Carlsbad Convention Bureau](#)

Social House

The Social House in Františkovy Lázně was built between 1793 and 1795 as an important centre of social life for spa guests. Since its establishment, it has served as a place for meetings and cultural activities.

In 1874, it passed into the ownership of the town of Františkovy Lázně and was subsequently expanded with a representative Conference Hall, which enhanced its exceptional character. Thanks to its historical significance, elegant space and important role in spa life, the Social House has become one of the architectural landmarks of the town.



On the ground floor of the Social House, you can today visit the “Viennese Café” located in the premises of the original inn. The original hall now houses the “Goethe” restaurant. You can dine here above the largest aquarium in Europe, home to countless koi carp swimming directly beneath your feet. On the first floor of the Social House, there is another representative hall. On the ground floor, in the large hall of the Social House, various social events and concerts take place.

From the very beginning, the hall has been used as a venue for congresses, balls and important social events.



300 persons



AV conference equipment



Františkovy Lázně



www.pawlik-aquaforum.cz

[More info: Carlsbad Convention Bureau](#)

Château Kynšperk

Kamenný Dvůr follows the long history of the original manor farm, which is documented as early as the 14th century. The current appearance of the château dates from the last third of the 18th century and today represents a sensitively restored historic complex that combines an authentic atmosphere with modern comfort.

The château is located by the R6 expressway near the turn-off to the town of Kynšperk nad Ohří. It lies almost in the centre of the West Bohemian spa triangle of Karlovy Vary, Františkovy Lázně and Mariánské Lázně. Following its acquisition by a new owner, the château buildings were renovated and adapted. The château gardens and the pond with an island were also revitalised.



Thanks to its peaceful surroundings, representative architecture and facilities set within a park, it offers an inspiring venue for conferences, corporate meetings and social events. The complex also includes stylish accommodation with views of the château park or the stone courtyard.



80 persons



basic conference equipment



357 51 Kynšperk nad Ohří



www.zamekkamennydvur.cz

[More info: Carlsbad Convention Bureau](#)

Vysočina Region

Unexpected Venues



On Board the Horácko Boat on the Dalešice Reservoir

In the heart of the Vysočina Region, not far from historic Třebíč, the landscape opens into a deep valley where the water surface shimmers among the forests. The Dalešice Reservoir is a place where new energy and ideas can come to you.

The Horácko boat offers a combination of covered and open spaces, where you can enjoy the sunshine on the upper sun deck or the comfort of the covered front and rear decks. The cruise is therefore possible in any weather. A capacity of up to 115 passengers allows for corporate events, celebrations or themed programmes.



A cruise on the Horácko boat is not just transport – it is a moment of calm, comfort and beautiful views that take on a completely different dimension from the water level. A corporate event thus becomes an unforgettable experience.



up to 115 persons



sound system on both front and rear decks



Dalešická přehrada, Kramolín 46



www.dalesickaprehrada.cz/lodni-doprava

[More info: Vysočina Region Convention Bureau](#)

Ivo
Sveboda





Museum of the New Generation Inventorium

The Museum of the New Generation at the château in Žďár nad Sázavou offers a unique combination of the latest audio and video technology with key moments from the history of the former Cistercian monastery and the Žďár nad Sázavou château.

The Inventorium at the château represents a multifunctional space with built-in technical equipment and a capacity of 130 seated persons, ideal for training sessions or teambuilding. A pleasant option is the use of the facilities of the château café. You can spark creativity, for example, by building Santini's arch – the materials are provided on site.



The château offers an unusual space for any kind of event – a calm and elegant setting for business meetings, as well as for teambuilding, for example in the adjacent château gardens.

-  up to 220 persons (capacity of the largest hall)
-  AV equipment
-  Zámek 8/8, Žďár nad Sázavou
-  zamekzdar.cz/muzeum-nove-generace

[More info: Vysočina Region Convention Bureau](#)

Bird House Farmstead in Bohuslavice

The Bird House is located within the grounds of the farmstead in Bohuslavice. Its entire façade is covered with 2,000 birdhouses, which are inhabited by birds. Every spring, a wide range of bird species from across the natural environment raise their young here.

The ground floor of the Bird House offers a bar with two fireplaces, including seating areas. On the upper floor, there are additional spaces that can be used together for hosting larger-scale events such as corporate training sessions, parties, celebrations and more.



The Bird House is an ideal venue for events with attendance of up to 130 persons. It is a space that can be used to the fullest extent to ensure privacy. The room is equipped with projection technology, a large-format screen, separate WC facilities and a fitted kitchenette. Within the farmstead complex, a restaurant can be used and accommodation can be arranged.



130 persons



AV equipment



[Bohuslavice 10, Telč](#)



hospodarskydvur.cz/ptaci-dum

[More info: Vysočina Region Convention Bureau](#)

PodpoVRCH at Jihlava Zoo

Jihlava Zoo is a modern zoological garden and has something to offer all year round. Combine corporate training with an exotic experience without having to travel to another continent – in Jihlava you will find all five.

To reach the right depth of your thoughts, it is sometimes necessary to go beneath the surface. And that is exactly what the environmental centre “PodpoVRCH” at Jihlava Zoo offers – facilities for seminars, lectures and corporate events. Its unconventional appearance and interior equipment are certainly highly inspiring.



The entire structure, located next to the main entrance to the zoo, has the appearance of a hill covered with grass, complemented by stone and wooden palisades. A descending spiral corridor leading to the main lecture hall is lined with built-in aquariums and terrariums. Inside, you will find two unconventional classrooms – one with an interior resembling a ship and the other a cave.



Capacity up to 40 participants



AV equipment



Březinovy sady 5642/10, Jihlava



zoojihlava.cz/podpovrch

[More info: Vysočina Region Convention Bureau](#)

Rear Synagogue in the Jewish Quarter of Třebíč

The Rear Synagogue was built around 1669 and most of the structure dates from the late Renaissance period. It is decorated with unique wall paintings from the early 18th century and is considered the oldest example of preserved synagogue mural decoration in Moravia.

The Seligmann Bauer House, located next to the Rear Synagogue, presents a unique exhibition of Jewish family life in the interwar period. On the ground floor of the house there is a small shop, while the upper floor features a kitchen and bedroom. The attic of the building has been adapted into a lecture hall.



The Rear Synagogue offers spaces for hire for corporate and social events of a more intimate character, lectures, discussions and chamber concerts.



The capacity is 60 seated or 100 standing



Basic AV equipment



Subakova 1/44, 674 01 Třebíč



www.visittrebic.eu/pamatky/zadni-synagoga/

[More info: Vysočina Region Convention Bureau](#)

Hradec Králové Region

Unexpected Venues



Community Centre at Nová Paka Monastery

Nová Paka Monastery, awarded Building of the Hradec Králové Region 2024, offers unique spaces for your conferences, discussions, seminars, training sessions, meetings, workshops and exhibitions.

The community centre is located in a quiet, enclosed part of the former monastery complex on the first floor. For indoor events, you can choose either the Column Hall with a capacity of up to 120 seats or the Baroque Hall, which offers up to 175 seats in theatre-style arrangement. For summer events, there is a spacious Paradise Courtyard or a terrace. As an accompanying programme for your event, you can arrange the “Workshops for Adults”, which include painting ceramic pieces and other creative activities. The monastery also offers guided tours with a narrative that introduces the rich history of this place.



175



sound system, data projector, projection screen



Opolského 144, 509 01 Nová Paka



Komunitni-centrum-nova-paka.cz

[More info: Hradec Králové Region Convention Bureau](#)

Kinský Riding Hall

A demanding reconstruction carried out between 2019 and 2023 made it possible to open the Riding Hall at Karlova Koruna Château in Chlumeck nad Cidlinou and to create multifunctional spaces for the general public.

The Riding Hall also includes a thematic exhibition mapping the origins and renown of the local breeding treasure – the Kinský Horse. The multifunctional and exhibition spaces operate simultaneously, building a bridge between history, living culture and society. At the Riding Hall, you can host balls, gala evenings, fashion shows, training sessions and conferences. The hall has a capacity of up to 300 persons and the spaces are fully accessible.



The Riding Hall premises are fully multifunctional and modernly equipped. They include sound systems, projection equipment, lighting technology, heating/air conditioning and more. The entire complex is privately owned by the noble Kinský dal Borgo family.



300



complete conference equipment



Pražská 1, 503 51 Chlumeck nad Cidlinou



www.karlovakoruna-zamek.cz

[More info: Hradec Králové Region Convention Bureau](#)

Valdštejn Loggia

The Valdštejn Loggia is a unique early Baroque monument near the town of Jičín, commissioned between 1627 and 1632 by Duke Albrecht of Valdštejn.

It opens to the surrounding landscape through monumental arcades with a grand terrace. It forms part of a larger complex, which today also includes a courtyard with farm buildings and the Libosad park with a grotto. As part of efforts to revitalise the Loggia, the non-profit organisation Valdštejn Imaginarium was established, aiming to bring the historic building back to life through unconventional approaches. The complex also includes CAFÉ LOGGIE, a cosy café with a strong genius loci. For your event, in favourable summer weather, the terrace and garden spaces are available.



by arrangement



by arrangement



Jičín - Sedličky 4, 506 01



valdstejnskalodzie.cz

[More info: Hradec Králové Region Convention Bureau](#)

Broumov Monastery

The Benedictine Monastery is one of the most important Baroque landmarks of the Hradec Králové Region and also a dominant feature of the town of Broumov.

The history of the monastery dates back to the beginning of the 13th century. The monastery experienced its greatest flourishing after 1620 during the period of the so-called Catholic Reformation, when it was rebuilt in the Baroque style. The present appearance of the Broumov Monastery in the High Baroque style is the work of K. I. Dientzenhofer.



The monastery offers flexible spaces for your congress events, whether the Abbot's Halls with a total capacity of 150 persons, the Wood Shed accommodating up to 400 persons, the Drawing Room, the Vaulted Hall or the Hall of the restaurant U Tří růží. Within the complex, you will also find a café and a wide range of incentive programmes. These include wine tastings in the Benedictine cellars, cheese tastings from the Broumov Dairy, workshops in calligraphy and papermaking, as well as unconventional guided tours of the monastery.



400



complete conference equipment



[Klášterní 1, 550 01 Broumov 1](#)



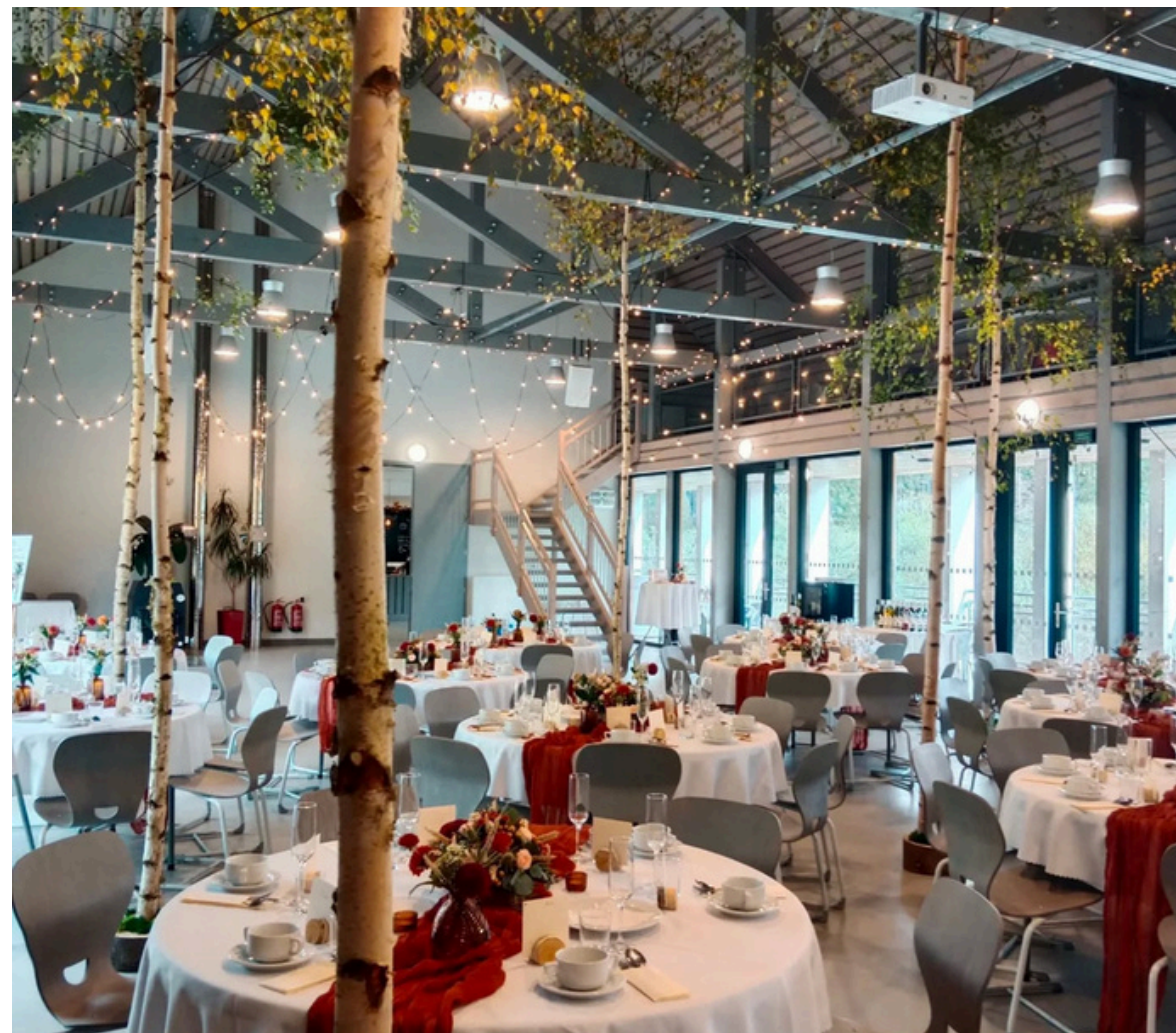
www.klasterbroumov.cz

[More info: Hradec Králové Region Convention Bureau](#)

U Proroka Social House

The Social House is located in the heart of the Orlické Mountains, in the popular pilgrimage site and formerly depopulated village of Neratov.

The centre of Neratov features a beautifully restored Church of the Assumption of the Virgin Mary, supported housing and therapeutic workshops for clients, a shop, a pub, a craft microbrewery, an information centre and a special school. It is in the U Proroka House that you will find modern and fully equipped spaces for corporate conferences, training sessions, seminars and other social events. The hall here has a capacity of up to 130 persons. Full-day catering can be arranged by the local bistro according to your requirements, and at the end of the day you can enjoy a tour of the church, a tasting of craft beer or a demonstration or lecture on social entrepreneurship.



130



complete conference equipment



517 61 Bartošovice v Orlických horách 122
Neratov



uproroka.cz

[More info: Hradec Králové Region Convention Bureau](#)

Northern Bohemia

Unexpected Venues



Rack Railway

The iconic cog railway from Tanvald to Kořenov and nostalgic rides on the glassmaking lines are among the unique gems of Czech railway transport.

The historic route in the Jizerské Mountains combines a technical experience with natural beauty and attracts not only railway enthusiasts but also groups looking for an original transport attraction with the atmosphere of times gone by.



The cog railway, the steepest line in Czechia, is the only one of its kind in the country, and its historic trains have become a popular destination for themed trips. Groups can reserve a ride on a steam or diesel train, complemented by a guide's commentary, a visit to a railway museum or refreshments during the journey.



up to 250 seats



AV equipment: external arrangement



Polubný 806, 468 50 Kořenov



www.zubacka.cz

[More info: Northern Bohemia Convention Bureau](#)

Hejnice Monastery

A pilgrimage site as well as a camp, a decaying ruin as well as an educational centre. For more than 300 years, the renowned Hejnice Monastery has watched over the centre of the foothill town of Hejnice and its surroundings.

At present, the former monastery serves as an educational, conference and pilgrimage house and, in addition to accommodation, also offers programmes focused on restoring spiritual and physical well-being. Participants can rest and unwind in the refectories and a small gym.



Visitors have access to a lecture hall with a capacity of 100 persons and smaller lounges for 30 persons. For an unconventional conference or group meditation, the monastery garden is also available.



up to 80 persons



data projector, screen, sound system



No. 1, 463 62 Hejnice



www.klasterhejnice.cz

[More info: Northern Bohemia Convention Bureau](#)

Lázně Liberec Gallery

Sensuous strokes by Czech and European artists hidden within ornate frames of paintings and the rounded forms of sculptural masterpieces that are almost indistinguishable from life.

This is the Regional Gallery in Liberec, which boasts a collection of 21,000 works of art from almost all over Europe and is rightly referred to as a Museum of European Art. Although the gallery is home to a far-reaching history, it is also a place where the past continues to be written. The building in which the gallery is housed was originally intended to serve as municipal baths, which with their bathtub, Roman-Irish and steam baths operated here until the 1980s. The conversion of this unique building was recognised in 2014 when it received the Grand Prix of Architects – the National Architecture Award.



This magnificent and history-infused building is also suitable for corporate events and meetings. The former swimming pool hall, with a capacity of 200 persons, has been transformed into a modern cultural hall and is suitable for conferences, congresses or seminars, offering an exceptional experience in an attractive setting. Visitors can complement their programme with guided or interactive tours or an art workshop with experts, allowing everyone to discover the artist within.



up to 200 persons



data projector, screen, sound system



Masarykova 723/14, 460 01 Liberec



www.galali.cz

[More info: Northern Bohemia Convention Bureau](#)

Malevil Resort

Discover the charm of Malevil Resort. A place where dreams of the perfect holiday come to life.

Malevil offers excellent facilities for weddings, corporate events, teambuilding activities and celebrations. Themed spaces, top-quality services and the beautiful surroundings of the Lužické Mountains create an unforgettable atmosphere, whether you are planning a small celebration or a large event.



It offers modern conference facilities, outdoor and indoor activities, wellness and professional catering. A tailored programme can be prepared for you, and experienced instructors ensure the smooth running of the entire event. Come to strengthen team spirit, gain inspiration and enjoy unforgettable moments in a setting that combines work with relaxation.



up to 150 persons



data projector, screen, sound system



Heřmanice v Podještědí 280, 471 25 Jablonné v Podještědí



www.malevil.cz

[More info: Northern Bohemia Convention Bureau](#)

Lipo.ink

Do you want to organise a meeting, press conference, training session or perhaps a smaller or larger conference? At the Lipo.ink building, you can choose from ten meeting rooms.

The Liberec Business Incubator is a non-profit organisation whose mission is to support both start-ups and established entrepreneurs in the Liberec Region. It has been fulfilling this mission since 2017 as an independent section of ARR – the Regional Development Agency, Ltd. Since 2020, it has been based in a revitalised building in the centre of Liberec, where it provides modern facilities for its clients. The offer also includes a coworking centre, an ideal place for connecting fields and personalities.



Under one roof, you will also find offices, prototyping workshops and event and meeting spaces available for hire. The bright and airy spaces are fully equipped with projection technology, and kitchenettes and a reception are also available. For large events, there is a unique two-storey space with a bar, stage and large screen.



up to 90 persons



data projector, screen, sound system



U Jezu 525 / 4, 460 01 Liberec



www.lipo.ink

[More info: Northern Bohemia Convention Bureau](#)

Moravian-Silesian Region

Unexpected Venues



A wine cellar in Ostrava?!

Ostrava Wine Cellar – a truly unexpected venue in the centre of Ostrava.

The large hall has a capacity of 80–100 persons, while the smaller one accommodates up to 40 persons.

A wine cellar beneath the centre of Ostrava is something only few event organisers would expect in the North Moravia destination.

The underground cellar consists not only of storage spaces and boxes for preserving your own bottles of wine but also serves as a unique venue for your events.



The large hall has a capacity of 80–100 people, while the smaller hall accommodates up to 40 people. An upper restaurant with a fireplace and its own terrace is also available. Tailor-made catering for your events is, of course, provided.



up to 200 persons



AV equipment



[Engelmüllerova 3304, 702 00 Ostrava](#)



convention-ostrava.cz/ostravsky-vinny-sklep

[More info: Ostrava Convention Bureau](#)

Dřevěnky na Borku

Step back in time to the lives of working-class families of the 20th century. A place where wood whispers stories of the past.

Organise your smaller event in the unique open-air museum Dřevěnky na Borku – the last two timbered houses from 1878, listed as cultural monuments and among the last preserved buildings of their kind.

By gradually visiting four residential units, visitors can learn how people lived, worked and managed their households in the past. Behind the walls, both the joys and worries of working-class families once unfolded, at a time when the rhythm of life was shaped by work and the changing seasons.



Dřevěnky na Borku are not just a historical monument, but a living story of the everyday life of our ancestors.

An ideal place for a peaceful journey through history or for teambuilding with a demonstration of bread baking.



20 persons



subject to agreement, the site is not equipped with AV equipment



No. 116, 117 Třinec – Staré Město



www.drevenkynaborku.cz

[More info: Ostrava Convention Bureau](#)

Not Every House Is the Same

At first glance, the inconspicuous House of the Local Group of PZKO Jablunkov conceals a surprisingly pleasant space for corporate and social events.

The social hall is located on the upper floor of the building and offers a pleasant setting for events with a more personal and intimate character.

Thanks to the theatre stage, it is ideal for presentations, lectures, performances and smaller cultural programmes.

In a banquet layout with tables, it can accommodate approximately 100–120 guests, or up to 150 persons in theatre-style arrangement. Organisers will also appreciate the built-in sound system, projection screen and projection facilities, making the technical setup of the programme very straightforward.



A comfortable environment throughout the event is ensured by a heat recovery ventilation system, which provides fresh air even when the hall is fully occupied.

A kitchen is also available, along with the option of arranging catering services, so refreshments can be handled directly on site. The space is therefore naturally suited to corporate meetings, training sessions, smaller conferences, cultural evenings and community events.



up to 150 persons



AV equipment



Mariánské náměstí 18, 739 91 Jablunkov



www.pzkojablonkow.cz

[More info: Ostrava Convention Bureau](#)

Silesian Museum

Müller House, which is part of the Silesian Museum complex, combines the atmosphere of a historic building with practical facilities for modern events.

The hall in Müller House is suitable for conferences, seminars, lectures or social gatherings with a capacity of approximately 100 persons.

For presentations, basic technical equipment is available, including a projector, projection screen, tables and chairs, allowing the space to be easily adapted to the nature of the event. Organisers can also make use of a rental option including café facilities, making the space ideal for a reception or networking part of the programme.



Another advantage is access to the garden of Müller House, which offers a pleasant setting for the informal part of the gathering.

The premises of Müller House also serve as a new exhibition and display space of the Silesian Museum. You can combine your event in the hall with an accompanying programme in the form of a visit to the exhibitions.



100 persons



AV equipment



[Komenského 1/8, 746 01 Opava 1-Město](#)



www.szm.cz/mulleruv-dum.cz

[More info: Ostrava Convention Bureau](#)

Firefighting Museum Ostrava

A place where the history of saving lives was written now offers an interesting space for gatherings.

The museum is housed in the original Art Nouveau building of the former German Volunteer Fire Brigade.

The historic structure is complemented by a modern extension that sensitively connects old architecture with contemporary design.

An interesting feature is also a small screening room for approximately 15 persons, suitable for presentations, short screenings or an introductory part of the programme.



Visitors can also immerse themselves in the stories of firefighting equipment, operations and the development of urban protection, presented through the museum's exhibitions. The event programme can thus be naturally complemented by a guided tour, offering guests a different perspective on the history of the city.

Firefighters are also ready to offer first aid courses or demonstrations by arrangement.



cinema hall: 15 persons, exhibitions only by arrangement



AV equipment subject to agreement



Zákrejsova 53/3, 702 00 Ostrava



www.muzeum.hzsmsk.cz

[More info: Ostrava Convention Bureau](#)

Olomouc Region

Unexpected Venues



Church of St Michael

This is a Baroque church that ranks among the most beautiful in Olomouc. As early as the beginning of the 13th century, there stood a chapel dedicated to St Michael the Archangel, which the Czech King Wenceslas I donated to a group of Dominicans.

The Church of St Michael is considered the first domed building of the North Italian type in Moravia. The church is 60 metres long, 20 metres wide and 41.2 metres high from the floor to the ceiling of the central dome. It is located on Žerotín Square in the historic heart of Olomouc.

Concerts, organised tours and self-guided visits can be held in the church, all in accordance with the rules and strict regulations of the Church.



200 persons



in accordance with ecclesiastical regulations



Žerotínovo nám. 1, 779 00 OLOMOUC



svatymichal.cz

More info:

Central Moravia & Jeseníky Convention Bureau

Church of St Maurice and the Gothic Tower

St Maurice's Church, which serves as the main parish church of the city and at the same time as the seat of the provost, is located in the centre of Olomouc, surrounded by historic buildings.

The structure itself is one of the most important examples of Late Gothic architecture in Moravia, featuring a striking Late Gothic southern tower built of stone blocks with a bell tower extension.

The organ from 1745, significantly expanded between 1959 and 1971 into a five-manual instrument, ranks among the largest organs in Europe. It is therefore no surprise that St Maurice's Church is also one of the centres of musical life in Olomouc.



Concerts, organised tours and self-guided visits can be held in the church, all in accordance with the rules and strict regulations of the Church. The magnificent view from the tower is one of the most beautiful in Olomouc.



300 persons



in accordance with ecclesiastical regulations



Opletalova 10, 779 00 Olomouc



www.moric-olomouc.cz

More info:

Central Moravia & Jeseníky Convention Bureau

Minor Basilica of the Visitation of the Virgin Mary

The Minor Basilica of the Visitation of the Virgin Mary is located on Svatý Kopeček, approximately 5 km to the north-east of Olomouc. This architectural jewel immediately captures attention from afar with its bold structure rising above the landscape on a hill overlooking Olomouc.

The history of the pilgrimage site on Svatý Kopeček near Olomouc dates back to the beginning of the 17th century, at a time when Europe was shaken by the Thirty Years' War. In terms of its location, architecture and artistic decoration, the church at Svatý Kopeček ranks among the most remarkable Baroque buildings.



It is a masterful work of artists and craftsmen brought from regions beyond the Alps as well as from Vienna, working in the service of the Bishop of Olomouc and the abbots of Hradisko Monastery; however, many Moravian and Olomouc artists were equally involved. The structure is composed of a carefully designed façade, followed by two wings of residences on the right and left. Behind the church, the building continues with an open semi-circular ambit featuring an oval Chapel of the Virgin Mary, thus forming an extensive courtyard.

Concerts can be held in the basilica, and the basilica itself organises several tour routes, including guided and self-guided visits, all in accordance with the rules and strict regulations of the Church.



400 persons



AV equipment



Návrší Jana Pavla II. 1/1, 779 00 Olomouc
- Svatý Kopeček



www.svatykopecek.cz

More info:

Central Moravia & Jeseníky Convention Bureau

Mladeč Caves

The Mladeč Caves are located in the Litovelské Pomoraví Protected Landscape Area.

The underground spaces are richly decorated with stalactites and sinter formations. The caves offer the atmosphere of a distant past. They represent the largest and oldest settlement of Cro-Magnon humans in Central Europe.

A complex labyrinth of fissure corridors and domes has been formed within the limestone hill of Třesín. A world-famous archaeological site is the Dome of the Dead, with remains of hearths and bones of prehistoric animals, along with a reconstruction of an ancient ritual. The underground also features picturesque corners where new formations continue to develop alongside older stalactites.



Among the most beautiful and almost untouched spaces are the Temple of Nature and the Virgin Cave. The dominant feature and symbol of the underground system is the more than two-metre-high stalagmite known as the Mummy.

Cultural events such as concerts, lectures, small performances and many other incentive activities can be held in the Mladeč Caves.



by arrangement



sound system, lighting



Mladeč Caves, Litovelské Pomoraví



mladecske.caves.cz

More info:

Central Moravia & Jeseníky Convention Bureau

Dance Hall in Račí Valley

One of the most beautiful buildings in the surroundings of Javorník.

The dance hall and restaurant with a hall, built in the Art Nouveau style, used to be a renowned excursion destination for the residents of Javorník and the wider area.

Through an interactive exhibition, the dance hall presents the Rychlebské Mountains as a whole (regional fauna, flora and geology), as well as the history of the dance hall itself, which is unique within the region and, more broadly, within the Olomouc Region.



The building has two floors. The lower part consists of a lounge and a café (particularly suitable for more intimate celebrations or creative workshops), and also includes an information centre. A generous staircase leads to the first floor, where a spacious main hall is located. The dance hall serves as a venue for concerts, author readings, dance performances, workshops, weddings and more. The entire hall is covered by a distinctive flattened barrel vault. The space in front of the dance hall, surrounded by a park, can also be used. From spring to autumn, these outdoor areas can be used for relaxation, exercise and leisure.



100 persons



according to customer's request



Javorník, 79070 Javorník



tancirna.rychleby.cz

More info:

[Central Moravia & Jeseníky Convention Bureau](#)

Pardubice Region

Unexpected Venues



Chateau Orlice

Just a few minutes from the centre and yet surrounded by nature. Chateau Orlice is a place that can transform a corporate meeting into an inspiring event.

The dominant feature here is the Column Hall, one of the most impressive historic spaces in the region. Original architectural elements and distinctive colonnades create a ceremonial atmosphere that gives meetings and presentations a unique character.

The historic setting is complemented by modern technical facilities, including projection, sound systems and flexible hall arrangements. Companies can host conferences, training sessions and informal gatherings here. The programme can also be enhanced with an experiential dinner in a medieval tavern or a shared evening in the chateau setting.



Chateau Orlice offers three conference halls with a capacity of up to 120 persons, professional event management, catering and accommodation for dozens of guests. In your free time, you can enjoy the wellness facilities, go cycling or use e-bikes, or simply relax in the peaceful surrounding nature.



Column Hall – up to 60 persons, Breakfast Hall 50 persons, Lounge – 10 persons



data projectors with screens, sound system, flipchart and plasma televisions



Orlice 1, Letohrad 561 51



www.chateau-orlice.cz

[More info: East Bohemia Convention Bureau](#)

Gočár Gallery in the Automatic Mills

Industrial architecture, contemporary art and an inspiring atmosphere – that is Gočár Gallery in the Automatic Mills.

The Automatic Mills, an iconic industrial landmark designed by architect Josef Gočár, are now among the most prominent cultural venues in Pardubice. This is where Gočár Gallery is located, offering original spaces for corporate events, conferences and informal gatherings.



The multifunctional hall combines the industrial character of the building with modern facilities and exceptional acoustics. In theatre-style arrangement, it can accommodate up to 110 persons and, thanks to large windows, offers impressive views of the Automatic Mills complex and the Chrudimka River. Complete audiovisual equipment is available, including a data projector, sound system and a Petrof grand piano.

The space also includes an adjoining studio, which can be used for networking, a reception or a smaller workshop. The fully accessible environment and the combination of architecture, art and industrial atmosphere make Gočár Gallery a venue that can give a corporate event a distinctive character.



110 persons



AV equipment: data projector, sound system, projection screen, concert grand piano



Automatické mlýny 1961 530 02 Pardubice



gocarovagalerie.cz/pronajem

[More info: East Bohemia Convention Bureau](#)

Hernych Villa

An elegant historic villa transforms every event into a distinguished occasion.

Hernych Villa, the former residence of the textile entrepreneur Florian Hernych from 1906–1907, is one of the architectural gems of Ústí nad Orlicí. The representative building with rich stucco decoration and impressive interiors now serves as the seat of the town museum and at the same time offers original spaces for corporate events.

The dominant feature of the villa is the main hall with an area of approximately 100 m², providing an elegant setting for conferences, training sessions, presentations and smaller social events. The hall has a capacity of up to 78 persons and, thanks to its flexible layout, the space can be adapted to various types of gatherings – from theatre-style arrangement to more intimate seating at tables. The capacity is further extended by a gallery above the hall.



Modern technical equipment, including projection and sound systems, is of course available. Hernych Villa thus offers an unexpected combination of history, culture and professional facilities that can give any corporate event an exceptional atmosphere.



Capacity: 78 persons



projector, projection screen, sound system



17. listopadu 72, Ústí nad Orlicí



www.muzeum-uo.cz/budova_muzea

[More info: East Bohemia Convention Bureau](#)

Kubas Cottage

Kubas Cottage is a place where history embraces and nature inspires.

Originally a family farmstead with an inner courtyard, whose history dates back to 1745, today, after a sensitive renovation, it reveals its unique atmosphere and genius loci. Located in the foothills of the Orlické Mountains, surrounded by forests and meadows, Kubas Cottage invites you to stay and engage in activities in spaces where every corner tells its own story while offering comfort and inspiration.

Are you looking for a venue for corporate training sessions, workshops, teambuilding activities, educational programmes, retreats, outdoor schools or festivals?



Kubas Cottage offers a charming large hall in the attic, a small hall on the ground floor, a spacious party tent in the meadow and complete technical facilities, as well as accommodation and catering – everything prepared for the smooth running of your activities and the comfort of your guests.

Whether you come with the aim of creating, learning or strengthening team relationships, Kubas Cottage will captivate you with its atmosphere, tranquillity and hospitality. It is a place where ideas turn into reality and every moment becomes a pleasant memory.



Large hall 70 persons, Small hall 35 persons



sound system, projector, projection screen



Sudislav nad Orlicí 11, 562 01



<https://www.kubasovachalupa.cz/>

[More info: East Bohemia Convention Bureau](#)

Smetana House Litomyšl

A historic building that has hosted important social events for more than a century offers a dignified setting for large corporate events.

The majestic Neo-Renaissance building of Smetana House in Litomyšl was built at the beginning of the 20th century and has been a centre of social and cultural life in the town ever since. Today, it offers representative spaces for conferences, gala evenings, symposia, balls and other corporate gatherings.

The dominant feature is the large hall with a capacity of up to 487 seated guests in theatre-style arrangement. Thanks to its flexible layout, the space can be adapted to the nature of the event – from conference arrangements and formal table layouts to fashion shows with a runway or reception-style evenings.



For larger events, the outdoor summer stage in the adjacent park can also be used, expanding both programme options and capacity. Smetana House thus offers a unique combination of historic atmosphere, representative spaces and facilities for large corporate events.



Large hall 487 persons, Small hall 120 persons



sound system, lighting, projection technology (two screens at the front and rear of the stage)



Komenského náměstí 402, Litomyšl
570 01



www.smetanuvdum.cz

[More info: East Bohemia Convention Bureau](#)

Pilsen Region

Unexpected Venues



Loos Interiors – Semler Residence

A unique villa in the heart of Plzeň offering an exceptional space for both conference and experiential events. Thanks to its connection with interiors inspired by the distinctive architecture of Adolf Loos, it creates an environment that captivates every participant.

Semler Villa represents an unconventional and inspiring venue for corporate meetings, conferences, workshops and more intimate social events. The historic elegance of the interiors, based on the architectural concept of the renowned architect Adolf Loos, creates a unique atmosphere that combines cultural value with modern comfort.



The villa's spaces allow for flexible use – from formal presentations and professional conferences to creative workshops, networking evenings or intimate cultural programmes. An important addition to the venue is also Café Semler, which naturally enhances the experience and provides a pleasant setting for informal meetings, catering or relaxation between programme sessions. Thanks to its atmosphere, architectural value and intimate character, Semler Villa becomes a place that can give any event a distinctive context and an unforgettable experience for all participants.



up to 80 persons, guided tours for groups of 10 persons



projector, sound system, blackout facilities



Klatovská třída 721/110 301 00 Plzeň



www.semmler.cz

[More info: Pilsen Region Convention Bureau](#)

Plzeň Main Railway Station

Conference facilities at Plzeň Main Railway Station – an ideal place for meetings in motion. The strategic location ensures convenient access for participants from various cities and regions.

The conference facilities in the building of Plzeň Main Railway Station were created following an extensive reconstruction of the historic station building, completed last year. The newly opened halls sensitively follow the architectural character of the entire building, which is designed in the Art Nouveau style and is one of the prominent architectural landmarks of the city of Plzeň.

The interiors of the conference rooms combine a historic atmosphere with modern technical equipment and provide a representative setting for meetings, presentations, training sessions and smaller conferences.



By their concept, they follow the tradition of similar spaces in historic railway buildings, such as the Fantova Building in Prague. Thanks to their location in one of the most important transport hubs of West Bohemia, they offer participants easy access by train and public transport, while providing organisers with practical facilities that combine the representative setting of historic architecture with the dynamic atmosphere of a place where people meet every day while travelling.



46 persons



fully equipped with AV technology



Nádražní 102, 326 00 Plzeň 2

[More info: Pilsen Region Convention Bureau](#)

Světce Riding Hall near Tachov

One of the largest historic riding halls in Europe offers a unique setting for cultural and social events. The monumental space with its exceptional atmosphere creates an ideal backdrop for events that aim to impress with their distinctiveness.

Světce Riding Hall is among the most remarkable historic structures of its kind in Central Europe and represents an exceptionally attractive venue for cultural and social events. This monumental Neo-Romantic building from the 19th century, located near the town of Tachov, was originally part of a grand château complex and continues to impress with its scale and architectural design.



The vast interior of the riding hall, which ranks among the largest historic equestrian halls in Europe, offers a unique atmosphere suitable for concerts, conferences, gala evenings and other event formats seeking a truly representative environment. The historical authenticity of the site is today complemented by a sensitive restoration and modern technical facilities, allowing the space to be flexibly adapted to various types of events. The riding hall in Světce thus represents an inspiring venue where history, architecture and the unique atmosphere of a grand space come together – an ideal setting for events that aspire to become a truly memorable experience.



up to 1000 persons



depending on the nature of the event



Svetce 2 34701 Tachov



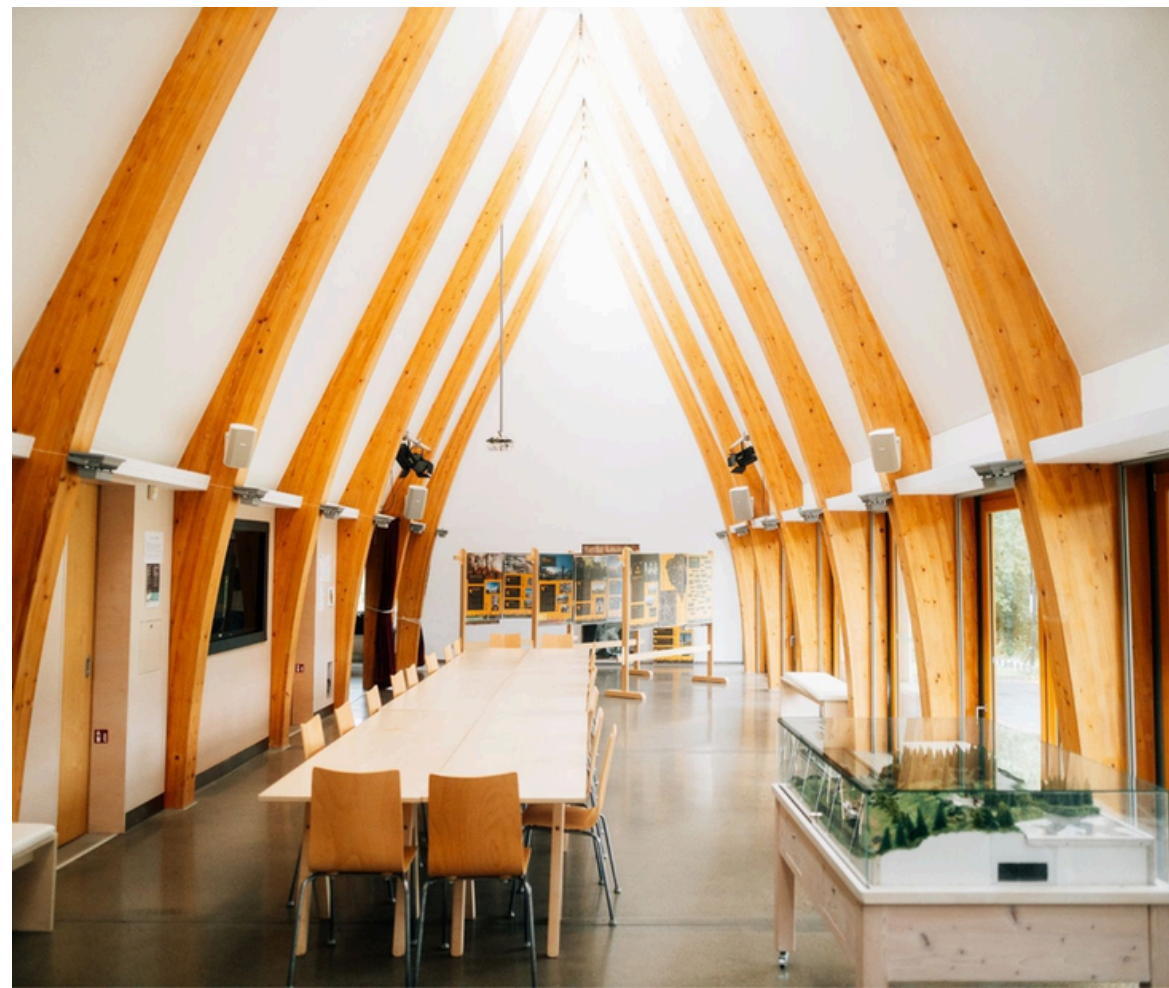
www.jizdarna-svetce.cz

[More info: Pilsen Region Convention Bureau](#)

Caolinum Centre Nevřeň

An unconventional industrial venue near Plzeň offers the opportunity to organise an event in an environment that literally draws you into the history and atmosphere of the underground. The kaolin mine in Nevřeň combines a technical monument with an authentic experience that can serve as an original addition to corporate or social events.

The Nevřeň Kaolin Mine represents an exceptionally authentic location that can give events a completely different dimension. This preserved deep mine from the 19th century conceals a labyrinth of corridors and halls, some reaching heights of up to twelve metres, still bearing traces of the miners' manual work and the atmosphere of original kaolin extraction. The site is accessible via guided tour routes organised from the Caolinum Centre Nevřeň visitor centre, which also provides facilities and accompanying programmes.



The connection between the historic industrial setting, guided tours and themed activities makes it possible to create an unconventional event concept – for example, a corporate meeting combined with an experiential journey underground. In the past, cultural events, light installations and video mapping have also been held here, demonstrating the potential of this space for creative and experiential formats. The kaolin mine in Nevřeň thus offers event organisers the opportunity to combine a working programme with the exploration of the region's technical heritage and to create an unforgettable atmosphere in a place usually hidden deep underground.



individual, depending on the nature of the event



depending on the nature of the event



Nevřeň 136, 330 11 Nevřeň



www.centrumcaolinum.cz

[More info: Pilsen Region Convention Bureau](#)

Ice Arena HC Škoda Plzeň 1929

An environment usually associated with top-level sport and strong emotions can also offer inspiring facilities for conferences, training sessions or corporate events. The conference spaces at the ice arena in Plzeň combine a professional programme with the unique atmosphere of a hockey venue.

The conference facilities within the Home Monitoring Arena complex offer an unconventional environment for corporate meetings, presentations, workshops or smaller conferences. The spaces of the ice arena, home to the HC Škoda Plzeň hockey club, bring a dynamic atmosphere and the energy of a sporting environment into business events. Modernly equipped conference rooms provide comfortable facilities for a professional programme while also offering the opportunity to combine the working part of the event with an experience typical of this venue.



Organisers can, for example, include a visit to a top-league match within the Tipsport Extraliga as part of the accompanying programme or informal networking. Combining a working meeting with an authentic sporting atmosphere creates a distinctive framework for events that aim to offer more than just a standard conference setting – an inspiring place where the business agenda naturally blends with the experience and emotions of the world of sport.



up to 50 persons



complete AV equipment; Wi-Fi



Štefánikovo nám. 1a; 30100 Plzeň



www.hcplzen.cz

[More info: Pilsen Region Convention Bureau](#)

Central Bohemia Region

Unexpected Venues



Vigvam Němĉice

An original circular wooden structure inspired by a Native American wigwam offers a distinctive and flexible space for large corporate events.

Vigvam Němĉice is the tallest structure of its kind in Europe and represents a striking alternative to conventional conference halls. The multifunctional hall is suitable for conferences, gala evenings, teambuilding activities and corporate parties. The space can be flexibly adapted to the client's needs and combined with outdoor activities within the complex. Thanks to its comprehensive event services, it is an ideal venue for large-scale events.



280 - 300 persons



complete technical facilities



Němĉice 152, Němĉice



www.vigvamresort.cz

[More info: Central Bohemia Convention Bureau](#)

Kačina Château Library

A representative historic library in the Empire-style Kačina Château creates an exceptional setting for exclusive corporate gatherings.

The monumental library hall, with tens of thousands of volumes, ranks among the most beautiful historic interiors in Central Bohemia. The library at Kačina Château is ideal for smaller conferences, professional seminars, press conferences or VIP evenings. The combination of noble architecture, history and the tranquillity of the château park offers guests a unique atmosphere that enhances the significance of every event.



100 persons



complete technical facilities



Svatý Mikuláš 51, 284 01 Kutná Hora 1



www.nzm.cz/kacina

[More info: Central Bohemia Convention Bureau](#)

Barbora Ironworks in Jince

An authentic industrial complex of a former ironworks offers an impressive atmosphere of technical heritage and an unconventional setting for creative projects.

Barbora Ironworks in Jince represents a unique industrial venue suitable for conferences, corporate meetings, exhibitions and experiential programmes. The space accommodates up to 120 persons and offers quality technical facilities, including a stage measuring 6×4 m, a projection screen and a projector.

A fully equipped kitchen and sanitary facilities are also available, allowing for the comfortable organisation of full-day events. Preserved historic features combined with flexible use of the space create an impressive setting for small and medium-sized events and appeal to clients seeking raw aesthetics and an unconventional genius loci in Central Bohemia.



Dagmar Malinová



Vladimír Holan



depending on the event



complete technical facilities



Huť Barbora, Jince 7, 262 23 Jince



www.hutbarbora.cz

[More info: Central Bohemia Convention Bureau](#)

Koněprusy Caves

Koněprusy Caves, the longest cave system in Bohemia, represent a unique combination of a natural phenomenon and an unconventional event venue. In combination with the modern facilities of the House of Nature of the Bohemian Karst, they offer an inspiring environment for smaller conferences, meetings and experiential programmes.

Koněprusy Caves, located in the heart of the Bohemian Karst Protected Landscape Area, represent an original and surprising venue for events with added value. Monumental stalactite decoration, a three-level cave system and unique historical finds create an unforgettable atmosphere that transforms an ordinary meeting into a powerful experience.



The caves themselves are primarily used for guided tours or exclusive accompanying programmes, while the conference facilities are located in the nearby House of Nature of the Bohemian Karst. This venue offers modern lecture spaces, technical equipment and facilities for workshops or corporate events. The connection between natural heritage and high-quality infrastructure makes Koněprusy Caves an ideal choice for organisers seeking an unusual setting, authenticity and an experience that participants will not easily forget.



screening hall 45–60 persons, meeting room 20–25 persons



Wi-Fi, data projector



Koněpruské jeskyně, Koněprusy 101, Beroun



www.dumprirody.cz/ceskykras

[More info: Central Bohemia Convention Bureau](#)

Studio under the Revolving Stage

An industrial space hidden beneath the stage of the Kolín Theatre offers an authentic atmosphere for creative and intimate corporate events.

Studio under the Revolving Stage is a unique event venue located directly in the basement of the Municipal Theatre Kolín. The raw black box with flexible layout allows for smaller conferences, workshops, networking evenings and stylish corporate parties. The space benefits from theatre facilities and technology, making it an ideal venue for events that aim to be different, memorable and culturally enriching.



80 persons (depending on layout)



projection, stage lighting, sound system



Municipal Theatre Kolín, Smetanova 557,
Kolín



www.divadlokolin.cz

[More info: Central Bohemia Convention Bureau](#)

Ústí nad Labem Region

Unexpected Venues



Church of the Annunciation of the Virgin Mary in Litoměřice

A monumental Baroque building from the 18th century, together with the complex of the older Jesuit college, forms an urban landmark of Litoměřice.

The church is administered by the North Bohemian Gallery of Fine Arts in Litoměřice, which uses it during the summer season for exhibitions and concerts.

During the winter months, the church is open only by prior arrangement and for events. The large-capacity spaces of the church, together with its genius loci, attract a wide range of interesting cultural events.



200 persons



by arrangement



Jezuitská, Litoměřice 412 01



www.galerie-ltm.cz

[More info: Ústí Region Convention Bureau](#)

Lake Most

Most Lake – a natural venue created by flooding a brown coal mine after the end of mining – is one of the dominant features of the city of Most.

The lake has already proven its potential during the Olympic Summer Festival in 2025 as well as at the Let it Roll music event. The site offers beaches, parking, the possibility to set up a tented village, service facilities and, in the near future, also a large campsite with mobile homes, camper pitches and services.



1000 +



subject to agreement / production company /

City of Most



Most



www.imostecko.cz/jezero-most

[More info: Ústí Region Convention Bureau](#)

Konojedy Château and Church

The château, formerly the Konojedy monastery, and the church together form a single complex on the foundations of an original 14th-century Gothic fortress, located near Ústěk in the České středohoří.

The Baroque church is among the recently restored and preserved monuments in the České středohoří. The château itself is still undergoing restoration. However, the church spaces are open for special concerts, musical events and performances.



300



by arrangement



Konojedy 61, Ústěk 411 45



www.zamekkonojedy.cz

[More info: Ústí Region Convention Bureau](#)

Žatec Synagogue

The museum and cultural space of the second largest synagogue in Bohemia, together with the Rabbi's House, rank among the unique and very attractive newly opened venues in Žatec.

The complex was opened to the public in 2024 after more than ten years since its acquisition and nearly five years since the beginning of its restoration. It offers a unique space not only for cultural and social events but also for seminars, which can be held in the Rabbi's House.



130–150 persons for concerts, 50 persons for seminars



as required – sound system, presentation technology



Dlouhá 200, 438 01 Žatec



synagoga-zatec.cz

[More info: Ústí Region Convention Bureau](#)

Jezeří – Château Above the Abyss

Jezeří Château, with its poignant past, is a place with a strong genius loci that evokes mixed emotions – both sadness and hope.

In the large hall, it is possible to organise a wedding, a smaller conference or meetings for journalists and partners.

The château is not luxurious or opulent, but it has a story and a distinctive atmosphere.



50 persons



subject to agreement, external arrangements



435 43 Horní Jiřetín



www.zamek-jezeri.cz

[More info: Ústí Region Convention Bureau](#)

Zlín Region

Unexpected Venues



Cimburk Castle

Cimburk Castle is one of the most unconventional venues for corporate or community gatherings in the region. The ruins of a Gothic castle hidden in the forests of the Chřiby Mountains offer the authentic atmosphere of a historic site far from civilisation – without electricity, without Wi-Fi, but with an even stronger experience of nature and history.

The castle grounds can be used for original corporate events, teambuilding activities, workshops or gatherings that aim to step outside standard conference frameworks. Participants can enjoy an evening by the campfire, a programme under the open sky and even the possibility of staying overnight directly within the castle grounds. The setting of ancient walls and the tranquillity of the surrounding forests create a unique space for gatherings that combine adventure, history and an unforgettable atmosphere.



The castle is located near Koryčany, in the middle of the forests of the picturesque Chřiby Mountains, so it is necessary to count on basic conditions without electricity. Enjoy the nostalgia of earlier times without electricity or Wi-Fi and perhaps sing by a campfire. All arrangements are subject to agreement with the castle administration – tel. +420 602 446 025.



50 persons



without equipment



[Cimburk 204, 768 05 Koryčany.](#)



www.cimburk.eu

[More info: East Moravia Convention Bureau](#)

Čipera Villa

Representative spaces, inspiring architecture and a strong story of Baťa history. The villa of Dominik Čipera offers a unique setting for seminars, workshops and smaller conferences in the authentic environment of Zlín functionalist architecture.

Dominik Čipera's villa is one of the architecturally exceptional buildings in Zlín and today serves as a cultural and creative centre with representative spaces for hosting various events. For seminars, workshops, smaller conferences or social gatherings, two elegant halls are available – the Dominik Čipera Hall with views of the city and a terrace, and the modern Vladimír Karfík Hall.



The villa also features a permanent exhibition dedicated to the personality of Baťa director Dominik Čipera, the history of interwar architecture and themes of housing and design. The building also hosts creative workshops, educational programmes and design workshops that connect the cultural heritage of Zlín with contemporary creation.



120 persons in 2 halls (50 and 70)



projector, sound system, projection equipment



Burešov 3675/4 760 01 Zlín



www.ciperovavilazlin.cz

[More info: East Moravia Convention Bureau](#)

NEW PLOŠTINA Exhibition, House No. 166

The national cultural monument of Ploština is one of the powerful sites of memory of the Second World War and at the same time an unexpected yet highly inspiring venue for professional gatherings, seminars or smaller conferences.

Part of the complex is the Nová Ploština building, which houses modern conference and educational spaces used for educational programmes, lectures and thematic workshops. The renovated building also features the New Ploština exhibition, presenting life in the scattered settlement after 1947 and the changing perception of the memorial site in different historical periods. In the neighbouring visitor centre, there is an interactive exhibition The Tragedy at Ploština, commemorating the burning of the settlement by the Nazis in April 1945 and the fate of its inhabitants. The entire complex is complemented by a memorial on the hill above the settlement and the Chapel of Our Lady of Sorrows.



The space offers a unique combination of a strong historical story, a modern exhibition and the peaceful setting of the Wallachian countryside. For this reason, Ploština can be an inspiring place for professional seminars, educational programmes, discussion meetings or intimate conferences that aim to connect history, education and deeper social themes.



50 persons



screen, projector, sound system



Drnovice 165 a Drnovice 166, 763 25



www.muzeum-zlin.cz/plostina

[More info: East Moravia Convention Bureau](#)

Jesuit Cellar

The Jesuit Cellar is one of the most interesting historic spaces for hosting unconventional events in the region.

The extensive cellar, built by the Jesuit order as early as 1668, originally served for storing wine from vineyards around Uherské Hradiště and has preserved the unique atmosphere of historic wine cellars to this day.

Today, the sensitively restored space is used for cultural events, wine tastings, lectures and social gatherings. Thanks to its generous capacity of more than 120 seats, it is also suitable for corporate evenings, themed seminars, workshops or more intimate conferences that aim to offer participants something truly unusual. The historic vaulting, authentic setting and genius loci create an ideal backdrop for events that are not easily forgotten.



Note: it is necessary to take into account the climatic conditions of the cellar. The temperature in the cellar ranges between 16 and 21 degrees Celsius depending on the outdoor temperature.



120 persons in theatre-style arrangement



projector, projection screen, sound system



nám. Velké Moravy 2190, Staré Město



www.icstaremesto.cz/pronajmy-jezuitsky-sklep

[More info: East Moravia Convention Bureau](#)

Kurovice Castle

A Renaissance fortress in a small village near Holešov is an interesting example of various architectural styles and offers an unconventional setting for corporate and social events. The programme may include a guided tour of the castle with commentary on its history, as well as a stylish feast in an authentic historic environment.

The complex also allows for unusual overnight stays – in a sleeping bag on a mat directly within the castle premises, with electricity and water available. Events held at the castle contribute to its gradual restoration and enhance the attractiveness of the region for tourism.

The capacity ranges from 50 to 250 persons depending on agreement and the type of event. For arrangements, contact the owner Martin Malina at +420 602 515 151.



50–250 persons subject to agreement



own equipment required



Kurovice 33, 768 52 Kurovice



www.kurovice.info

[More info: East Moravia Convention Bureau](#)

**Next month, you can look forward
to “green” venues for your event – green rooftops, urban gardens
and other locations for open-air meetings!**